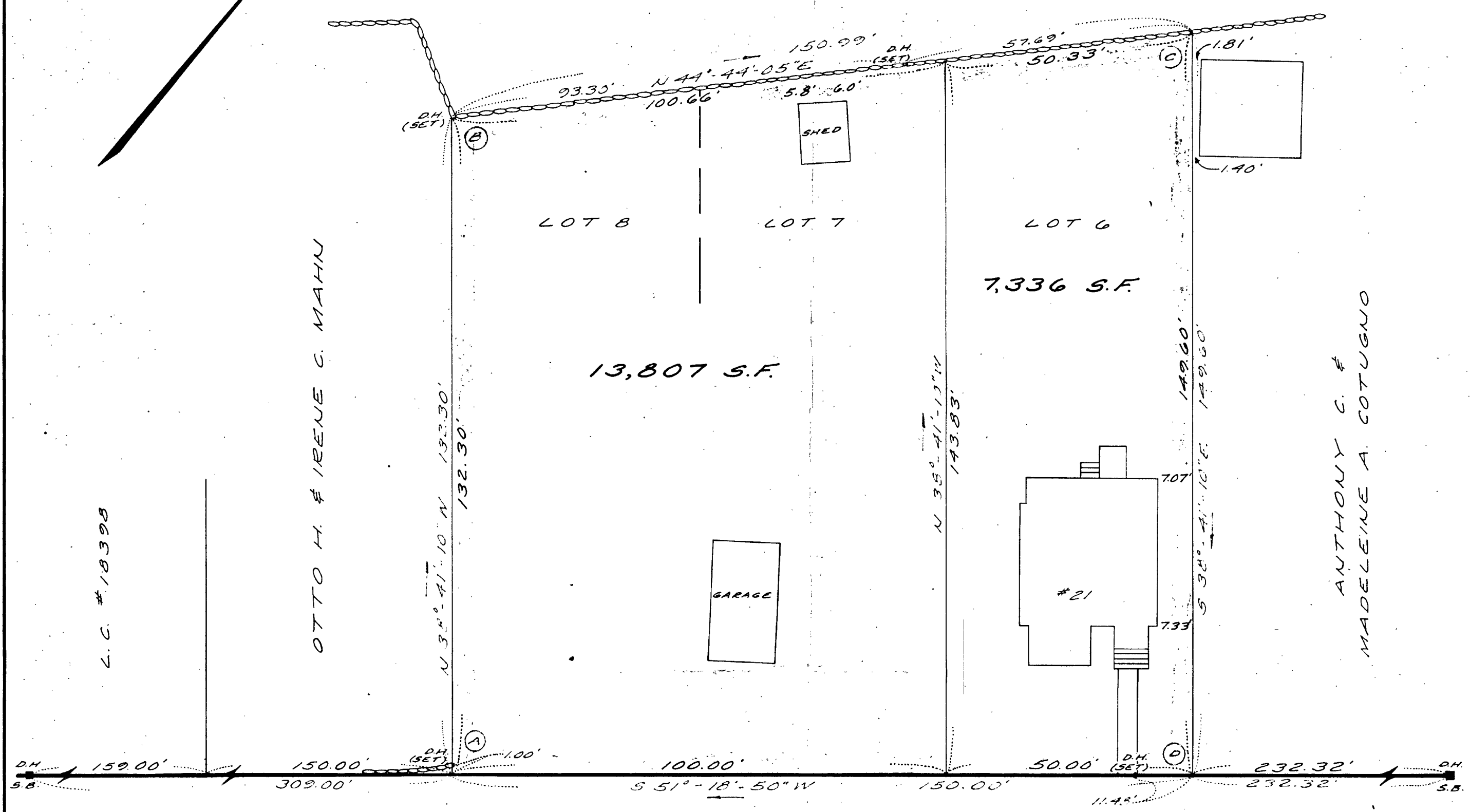


FIELD SURVEY TRAVERSE TABLE							
STA.	INTERIOR	BEARING	DIST.	N(+)	S(-)	E(+)	W(-)
A		90°-00'-00"					
B		N 38°-41'-10" W	132.300'	103.271'			82.694'
C		N 44°-44'-05" E	150.994'	107.262'		106.273'	
D		S 38°-41'-10" E	149.600'		116.775'	93.508'	
E		90°-00'-00"					
F		S 51°-18'-50" W	150.000'		93.758'		117.087'

ROMAN CATHOLIC ARCHBISHOP OF BOSTON



(PUBLIC)
TRAFALGAR COURT
 (50' WIDE)

I CERTIFY THAT THIS ACTUAL SURVEY
 WAS MADE ON THE GROUND IN ACCORDANCE
 WITH THE LAND COURT INSTRUCTIONS OF 1959
 BETWEEN NOV 10, AND NOV 26, 1965.
 NOV 26, 1965 *Lamont R. Healy*

APPROVAL UNDER THE SUBDIVISION
 CONTROL LAW NOT REQUIRED
 DEC. 7, 1965 *William F. White* CHRMN.
 WEYMOUTH PLANNING BOARD

PLAN OF LAND IN
 WEYMOUTH, MASS.
 FOR
HERMAN F. PERRY
 SCALE: 1"=20'
 NOV. 26, 1965



LAMONT R. HEALY, INC. - LAND SURVEYORS
 50. WEYMOUTH, MASS.