

RECEIVED

OCT 11 1964

PLANNING BOARD
RANDOLPH

Approval not required under
the Sub-Division Control Act
Randolph Planning Board.

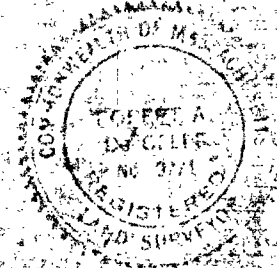
FOR RECORDING PURPOSES ONLY

Handwritten signatures:
Roger E. Mc...
Edward E. Asy J. Chairman
George F. Hoeg
Bernard Davidson
Laurie J. DeLata
George Fraser and
Margaret Phyllis Hoeg

Handwritten signatures:
George F. Hoeg (CHAIRMAN)
Charles J. Mac...
Edward E. Asy J.

PLAN OF LAND RANDOLPH, MASS.

Scale 1"=40' Nov. 1, 1965
L.W. DECELLE SURVEYORS, INC.
Bonded Land Surveyors
285 Union St., Randolph



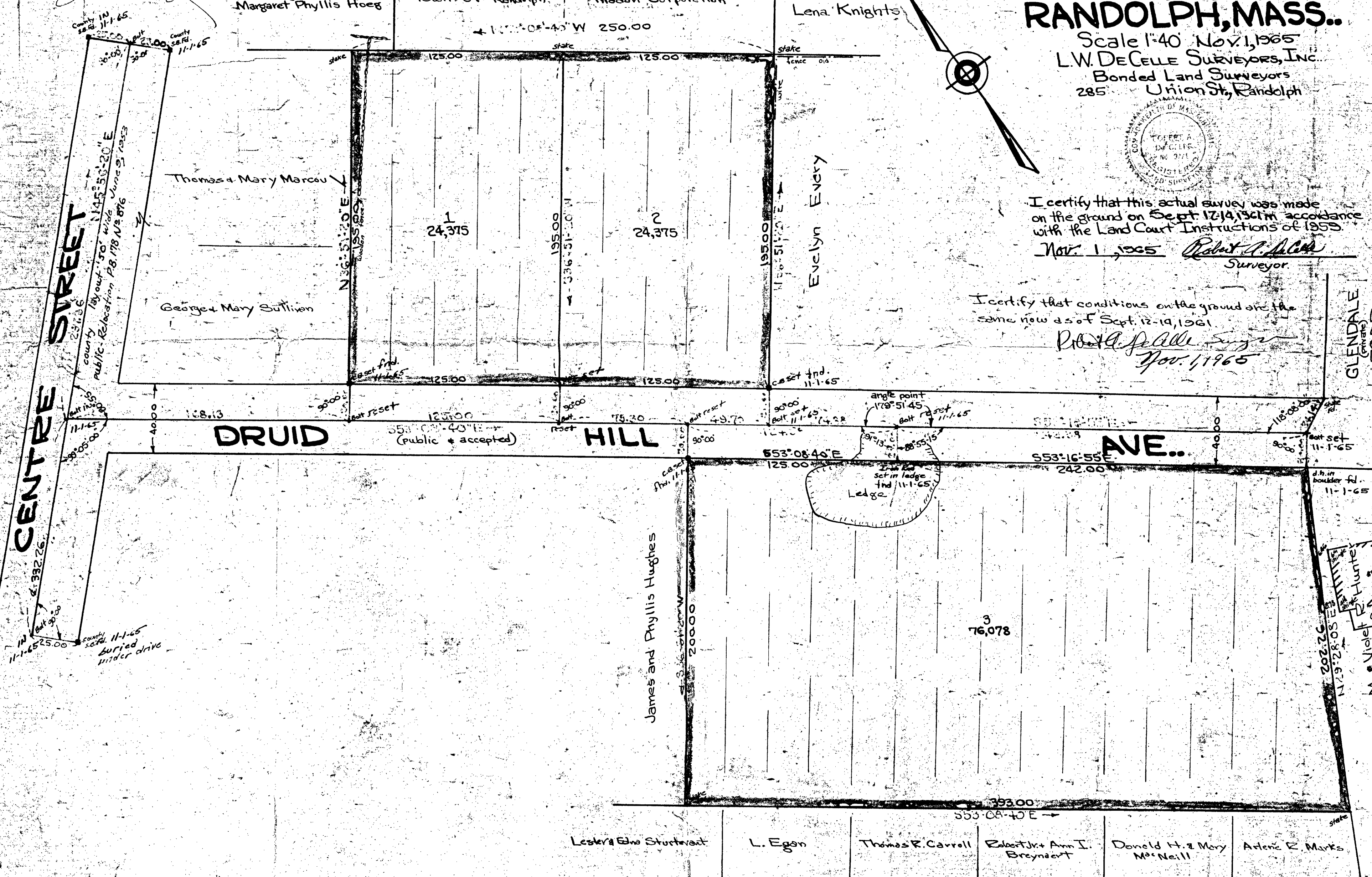
I certify that this actual survey was made
on the ground on Sept. 12, 1964 in accordance
with the Land Court Instructions of 1959.

Nov. 1, 1965 *Robert A. DeCelle*
Surveyor

I certify that conditions on the ground are the
same now as of Sept. 12, 1964

Robert A. DeCelle
Nov. 1, 1965

GLENDALE ROAD



See plan Registry of Deeds dated May 1910
by H.A. MILHOUSE Civil Engineer
Recorded July 3, 1910 plan No. 2672
P. 8k. 50