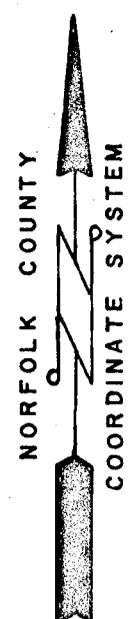
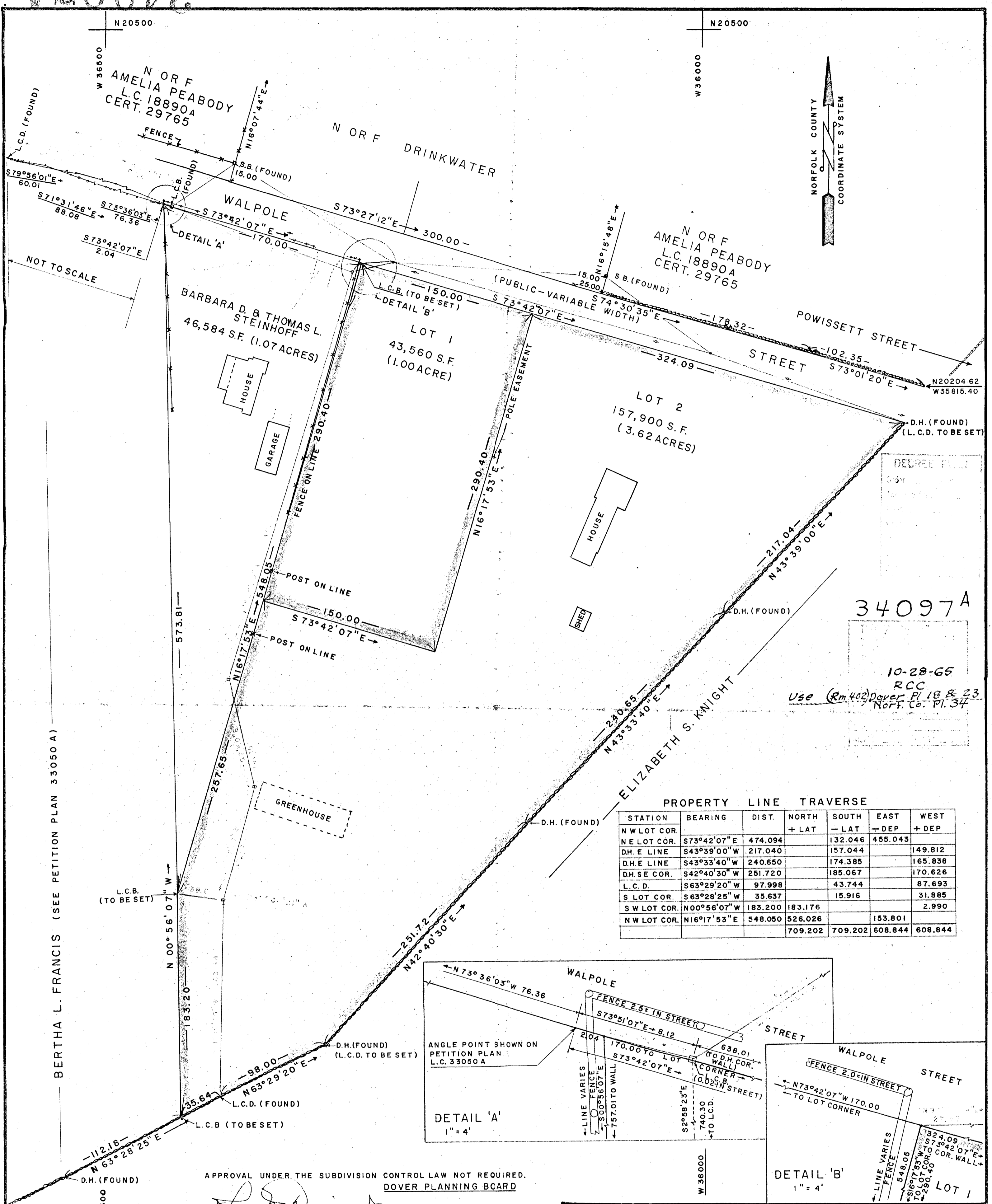


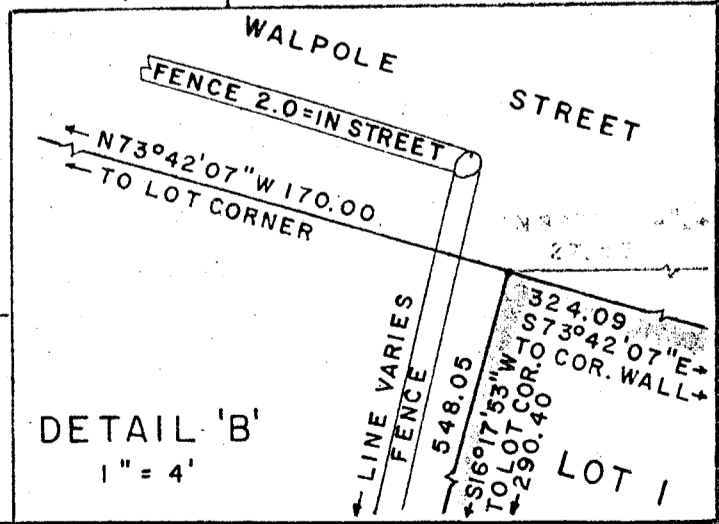
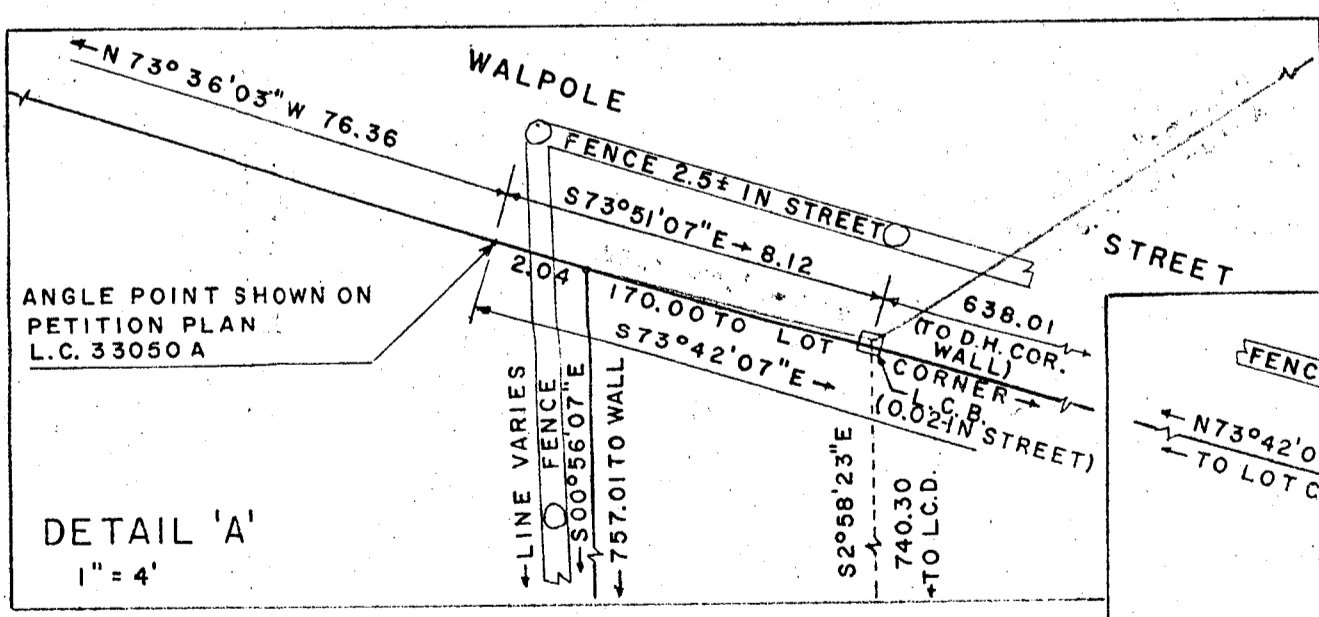
34097A



34097A
10-28-65
RCC
Use (Rm. 402) Dover Pl. 18 & 23
Norf. Co. Pl. 34

PROPERTY LINE TRAVERSE

STATION	BEARING	DIST.	NORTH + LAT	SOUTH - LAT	EAST + DEP	WEST + DEP
N W LOT COR.					455.043	
NE LOT COR.	S73°42'07"E	474.094		132.046		149.812
D.H. E LINE	S43°39'00"W	217.040		157.044		165.838
D.H. E LINE	S43°33'40"W	240.650		174.385		170.626
D.H. SE COR.	S42°40'30"W	251.720		185.067		170.626
L.C.D.	S63°29'20"W	97.998		43.744		87.693
S LOT COR.	S63°28'25"W	35.637		15.916		31.885
S W LOT COR.	N00°56'07"W	183.200	183.176			2.990
N W LOT COR.	N16°17'53"E	548.050	526.026		153.801	
			709.202	709.202	608.844	608.844



APPROVAL UNDER THE SUBDIVISION CONTROL LAW NOT REQUIRED.
DOVER PLANNING BOARD

John McDevine
October 25, 1965

I CERTIFY THAT THIS ACTUAL SURVEY WAS MADE ON THE GROUND
IN ACCORDANCE WITH THE LAND COURT INSTRUCTIONS OF 1959
BETWEEN SEPTEMBER 24 AND OCTOBER 15, 1965.
DATE: OCTOBER 25, 1965

Ralph E. Nolan
RALPH E. NOLAN P.E.L.S.
19 CLOELIA TERRACE
NEWTONVILLE, MASS. 02160

NOLAN ENGINEERING SERVICE 19 CLOELIA TERR. NEWTONVILLE, MASS. 02160		DATE: OCT. 15, 1965
PLAN OF LAND ON WALPOLE STREET IN DOVER-MASS.		
SCALE: 1" = 50' DETAIL AS NOTED		

34097A