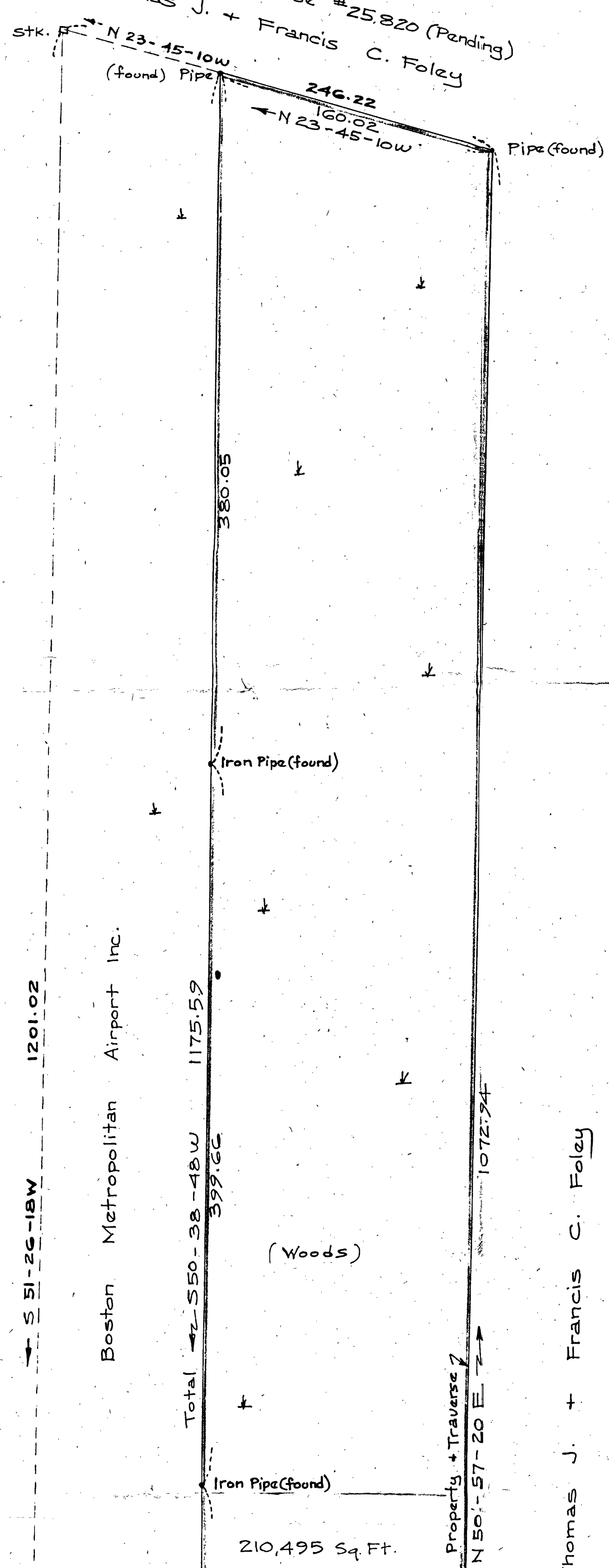
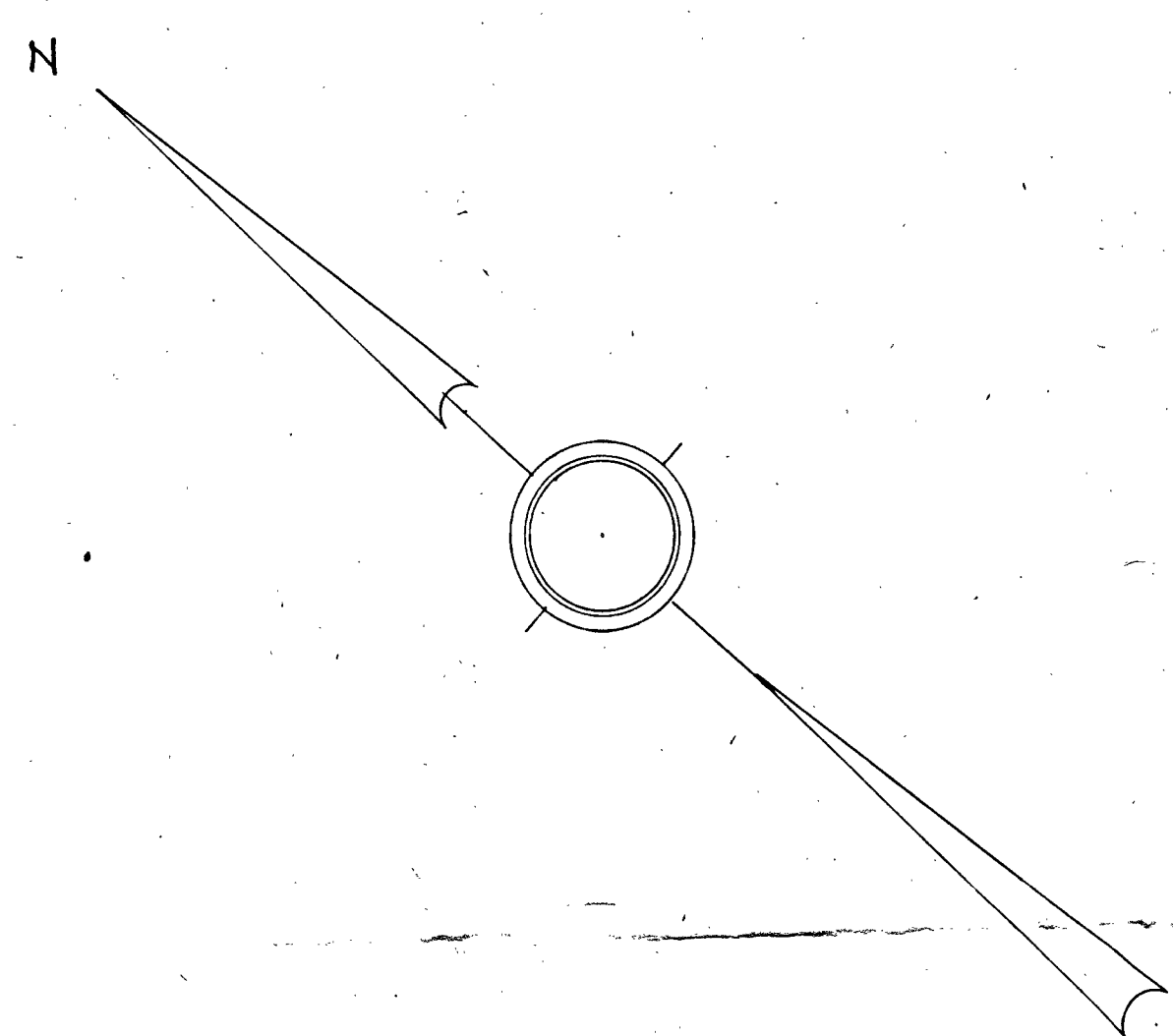


Land Court Case #25,820 (Pending)
 Thomas J. + Francis C. Foley



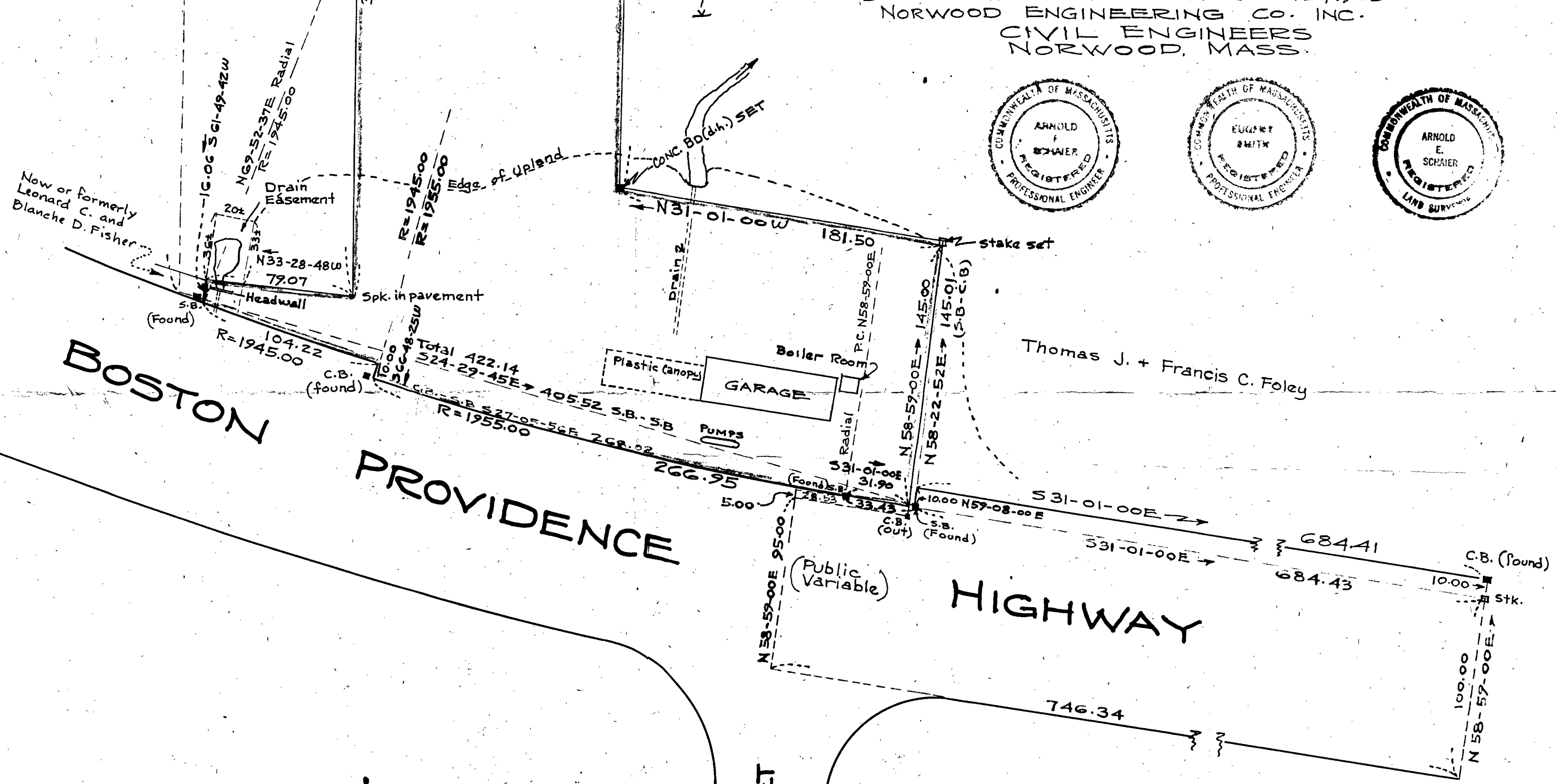
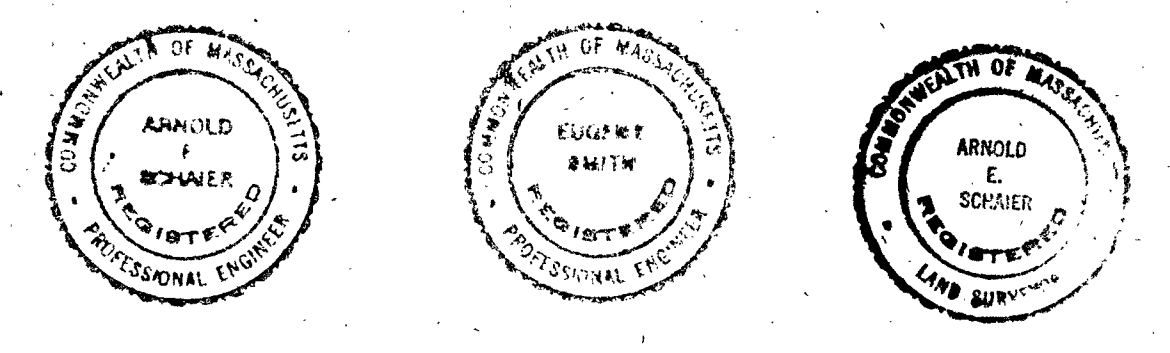
Thomas J. + Francis C. Foley

I certify that this actual survey was made on the ground in accordance with Land Court Instructions of 1959 between October 1, 1964 and April 12, 1965

Date: April 12 1965 - Arnold E. Schain
 1420 Providence Highway, Norwood, Mass.

PLAN OF LAND IN NORWOOD, MASS.

SCALE: 1 INCH = 50 FEET
 APRIL 12, 1965
 NORWOOD ENGINEERING CO. INC.
 CIVIL ENGINEERS
 NORWOOD, MASS.



Approval Under Subdivision Control Law Not Required
Paul M. Murphy
James T. Sullivan
James Wiggins
John J. Ryan
 Planning Board - Town of Norwood