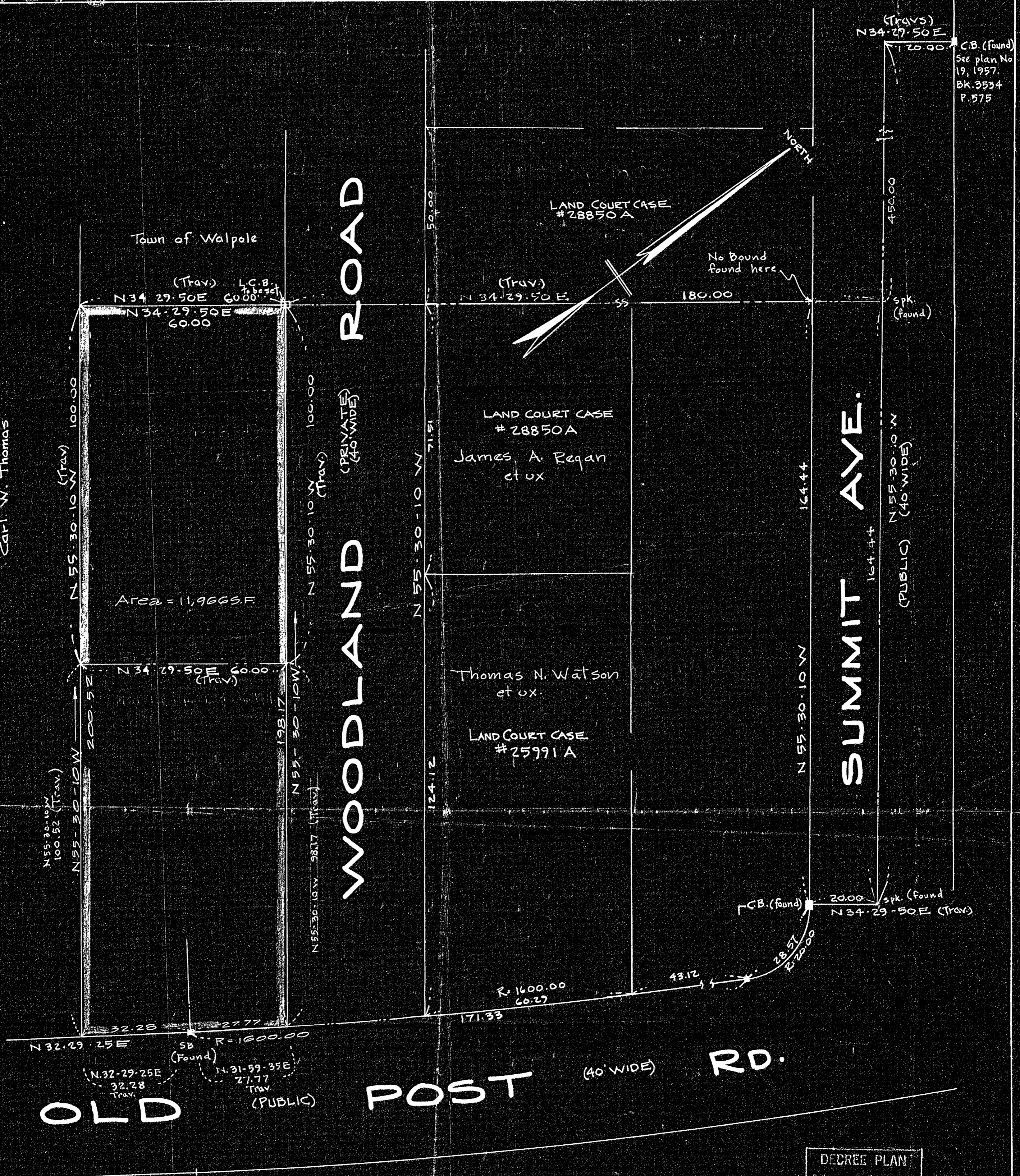


34032A

CARL W. THOMAS



(Trav) N34-29-50E
20.00
C.B. (found)
See plan No
19, 1957.
Bk. 3534
P. 575

Area = 11,966 SF

LAND COURT CASE #28850A

LAND COURT CASE #28850A
James A. Regan et ux

Thomas N. Watson et ux

LAND COURT CASE #25991A

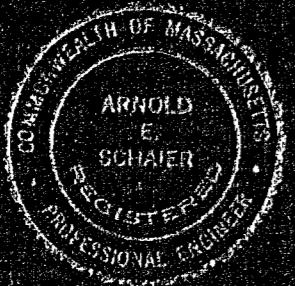
DECREE PLAN	
Order	Papers
Traverse filed	
Atlas	
Drawn by	
Made by	
Inspected by	
Approved	

Latosé Sabaites

PLAN OF LAND IN WALPOLE, MASS.

SCALE: 1 inch = 20 feet
NORWOOD ENGINEERING CO. INC.
CIVIL ENGINEERS
NORWOOD, MASS.

JUNE 9, 1965



34032A

9-24-65
K.C.C.
Walpole Pl. D-10

I certify that this actual survey was made on the ground in accordance with the Land Court instructions of 1959 on or between Oct. 10, 1962 and June 4, 1965

Date: June 9, 1965

Paul O. Gray

Approval Under Subdivision Control Law Not Required:

Paul O. Gray

Anthony M. Farvacca

Lucia E. Hoegler

July 15, 1965

Planning Board - Town of Walpole

34032A