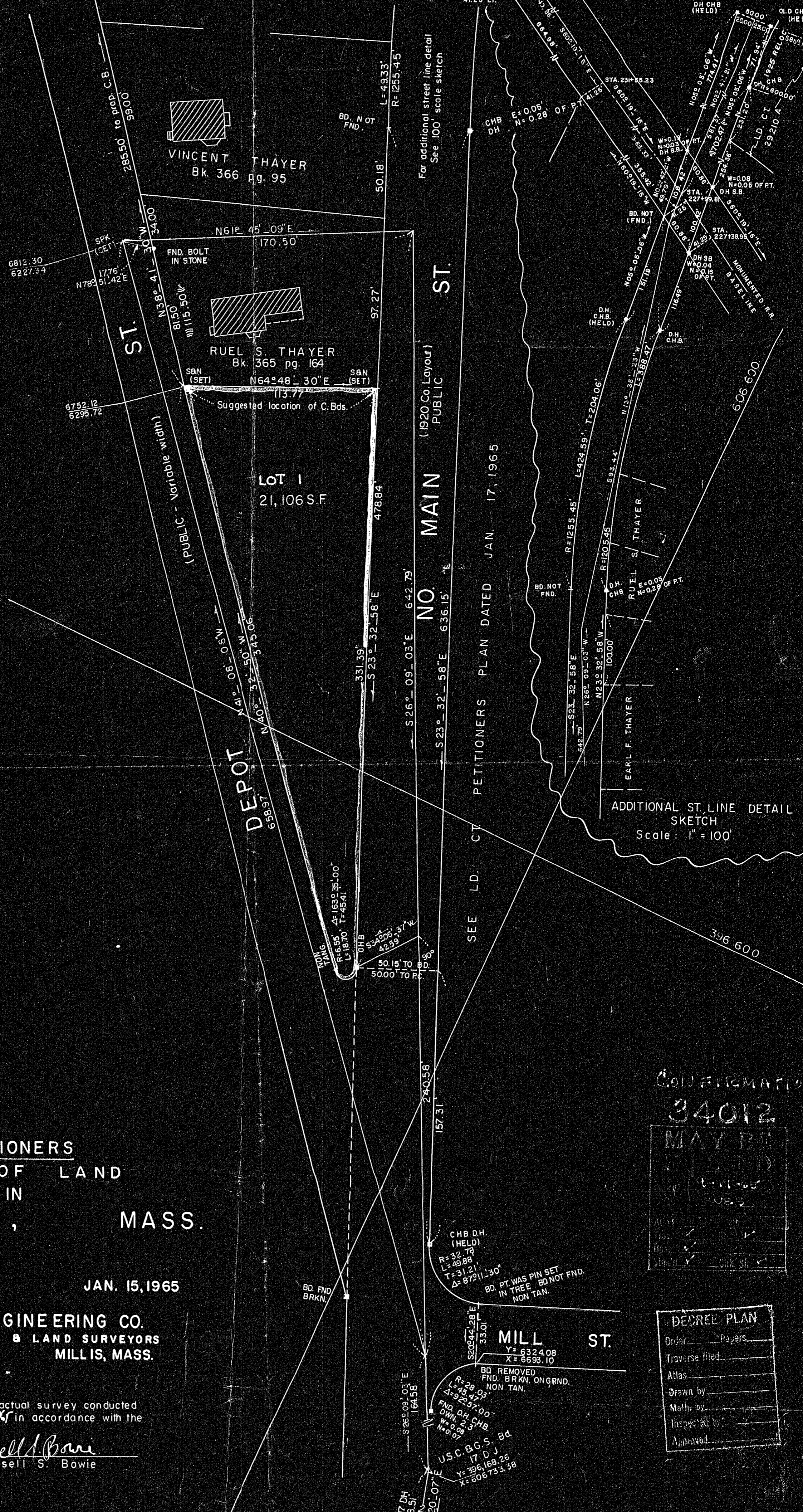
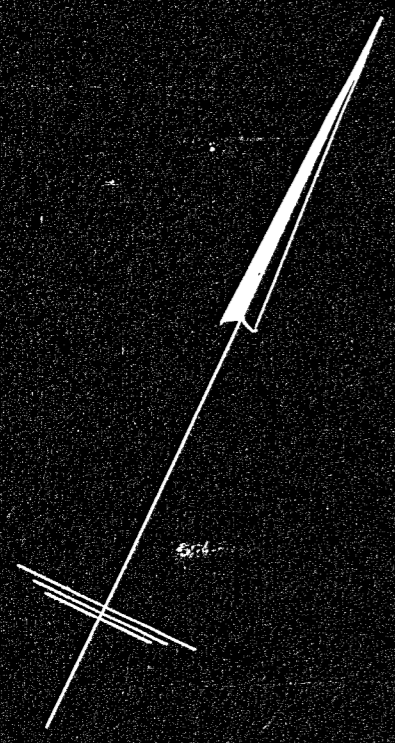


34012A

SEE PET. PLAN DATED JAN. 16, 1965
North of this parcel



For additional street line detail
See 100 scale sketch

SEE LD. CT. PETITIONERS PLAN DATED JAN. 17, 1965

ADDITIONAL ST. LINE DETAIL
SKETCH
Scale: 1" = 100'

BELLINGHAM PLANNING BOARD
Approval under the Subdivision
Control Law not required.

Francis J. Linn
Robert Chase
Warren C. Curran

Date: *August 12, 1965*

PETITIONERS
PLAN OF LAND
IN
BELLINGHAM, MASS.

SCALE: 1" = 40'

JAN. 15, 1965

BOWIE ENGINEERING CO.
CIVIL ENGINEERS & LAND SURVEYORS
707 MAIN ST. MILLIS, MASS.

I certify that this plan was made from an actual survey conducted
on the ground between *11/11/1960* & *Sept. 1, 1965* in accordance with the
Land Court Instructions of 1959.

Date: *Sept. 1, 1965*

Russell S. Bowie
Russell S. Bowie



CONFIRMATION

34012

MAY BE

FILED

1-11-65

1965

Atlas

Books

Signatures

DECREE PLAN

Order _____ Pages _____

Traverse filed _____

Atlas _____

Drawn by _____

Math. by _____

Inspected by _____

Approved _____

34012A

U-464