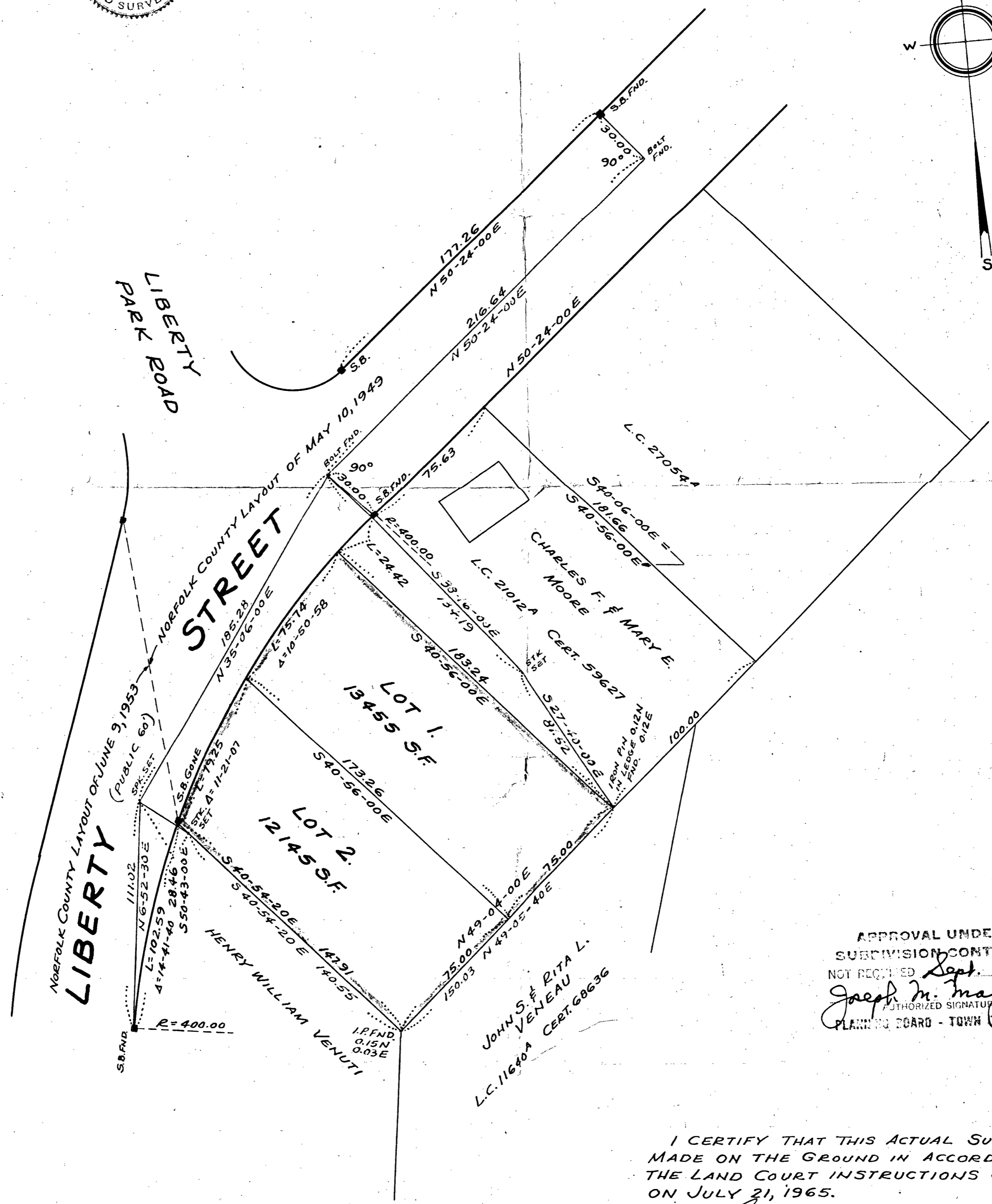
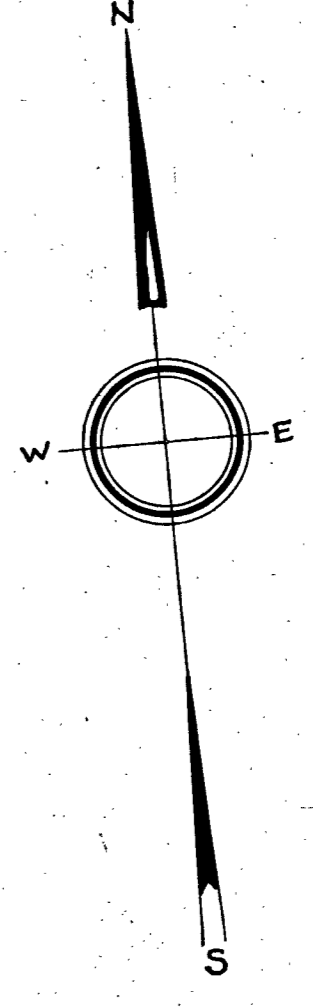


PLAN OF LAND IN
BRAINTREE, NORFOLK COUNTY, MASS.
SCALE: 1" = 40' AUGUST 5, 1965

GALE ENGINEERING Co. INC.
373 WASHINGTON STREET
BRAINTREE, MASS.



186.611
77.71
71.42
179.48 ✓

APPROVAL UNDER THE
SUBDIVISION CONTROL LAW
NOT REQUIRED *Sept. 8 1965*
Joseph M. Maga
AUTHORIZED SIGNATURE FOR
PLANNING BOARD - TOWN OF BRAintree

I CERTIFY THAT THIS ACTUAL SURVEY WAS
MADE ON THE GROUND IN ACCORDANCE WITH
THE LAND COURT INSTRUCTIONS OF 1959
ON JULY 21, 1965.

Charles E. Gale
CHARLES E. GALE R.L.S.

8/13/65
DATE