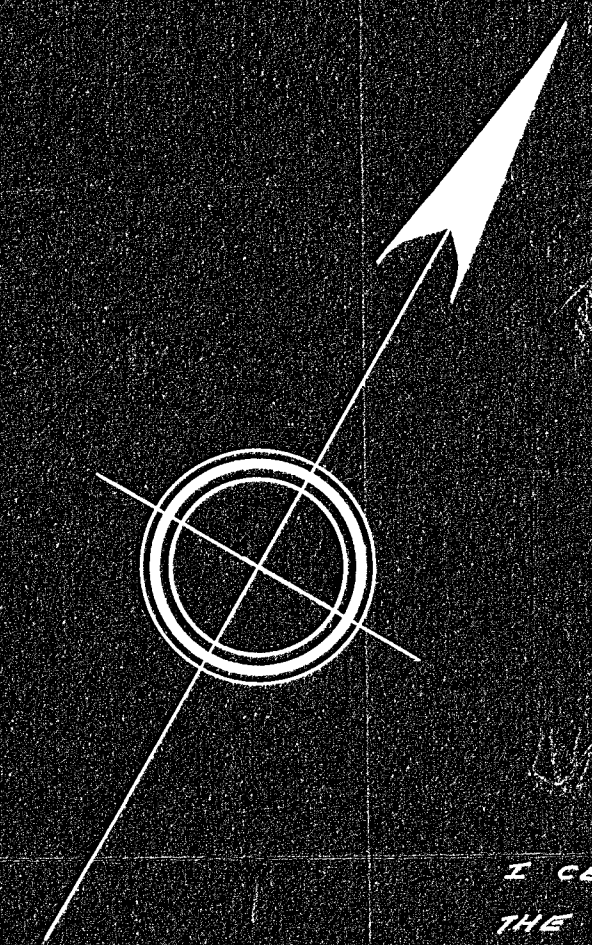


33987A

PLAN OF LAND IN
WEYMOUTH-NORFOLK COUNTY-MASS.

SCALE: 1"=30' FEB. 13, 1965
FRANK S. LAGROTTERIA - SURVEYOR
111 CENTRAL ST., SO. WEYMOUTH, MASS.



I CERTIFY THAT THIS ACTUAL SURVEY WAS MADE ON
THE GROUND IN ACCORDANCE WITH THE LAND COURT
INSTRUCTIONS OF 1959 BETWEEN OCT. 10, 1964 & FEB. 6, 1965.

2/13/65 *Frank S. Lagrotteria*

WEYMOUTH PLANNING BOARD
APPROVAL UNDER SUBDIVISION CONTROL
LAW NOT REQUIRED.

3/15/65 *William F. Davis*

INTERIOR ANGLE	BEARING	DISTANCE	N	S	E	W
86°24'55"	N 35°42'51" W	179.31	145.59	—	—	107.67
13°59'30"	S 21°43'21" E	32.10	—	29.82	11.88	—
256°00'30"	S 54°17'09" W	92.24	—	53.84	—	77.89
90°00'00"	S 35°42'51" E	141.89	—	115.21	82.83	—
93°35'05"	N 57°52'14" E	100.19	53.28	—	84.85	—
540°00'00"		198.87	198.87	179.56	179.56	—

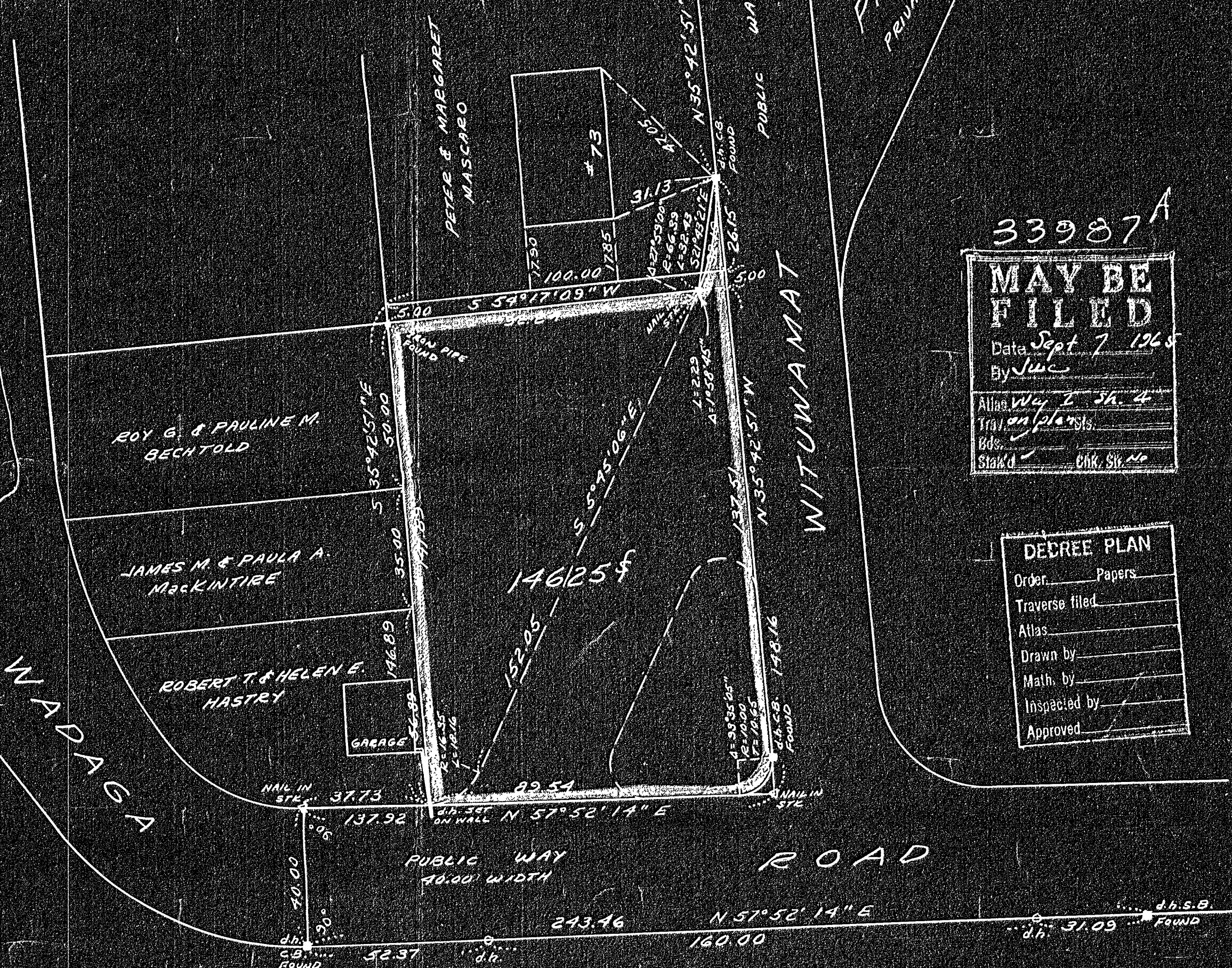
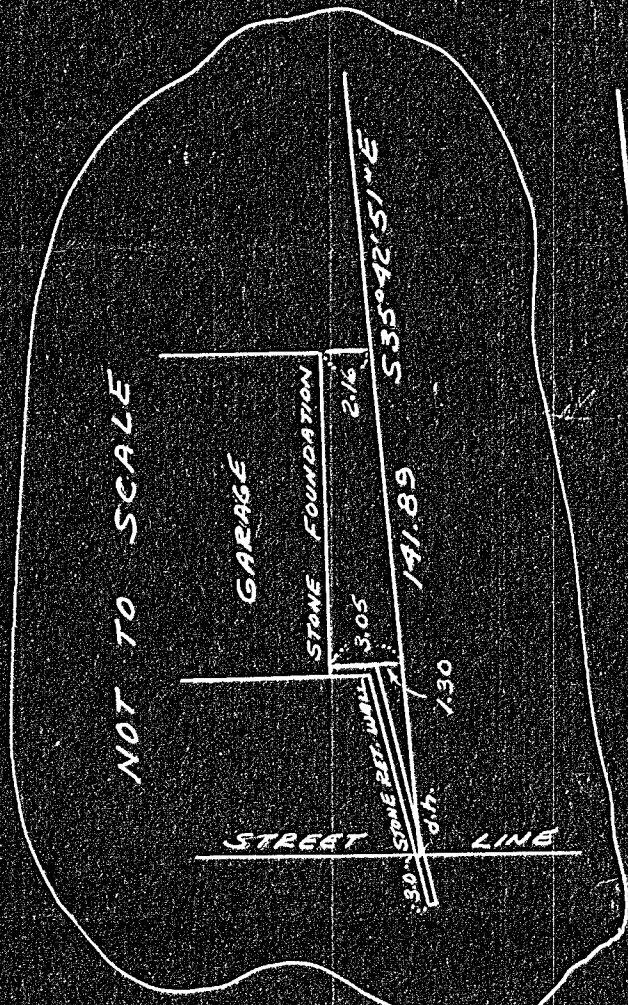
WESSAGUSSETT ROAD
PUBLIC WAY 40.00 WIDTH

51.81
DISC. IN C.B.

LAND COURT #30650

ROAD

PAOMET ROAD
PRIVATE WAY 33.00 WIDTH



33987A
MAY BE FILED
Date: Sept 7 1965
By: JWC
Atlas: Vol. 2 Sh. 4
Traverse: Plans
Bds. Staked
Chk. St. 26

DECREE PLAN
Order: _____ Papers
Traverse filed: _____
Atlas: _____
Drawn by: _____
Math. by: _____
Inspected by: _____
Approved: _____

33987A