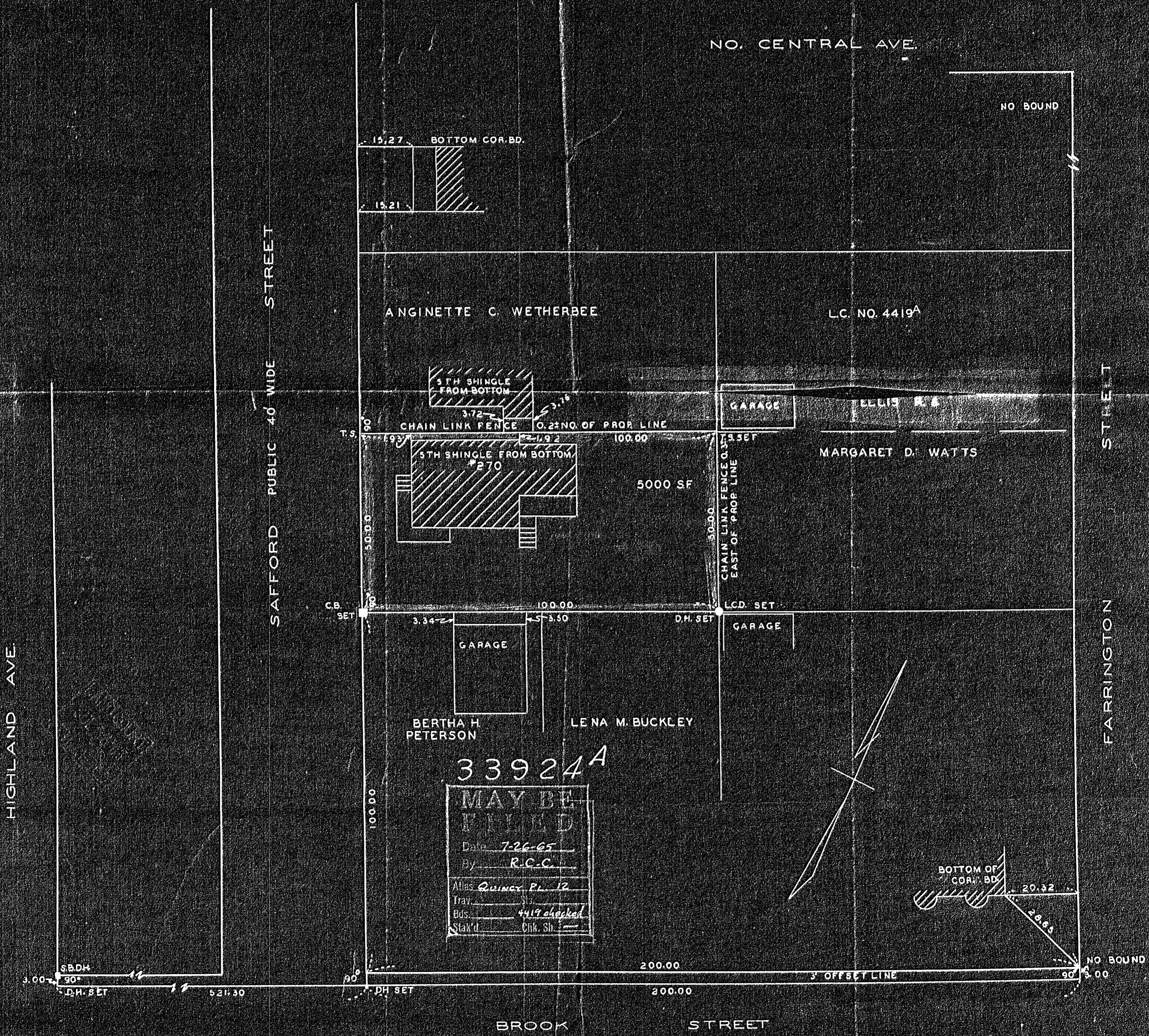


PLAN OF LAND IN
QUINCY, NORFOLK CO, MASS.
SCALE: 1" = 40' JAN. 18, 1963

THE SCHUYLER CLAPP CO
BRAintree, MASS.



33924A
MAY BE
FIELD
Date 7-26-65
By R.C.C.
Atlas Quincy P. 12
Trav. 11
Bds. 4419 checked
Stak'd Chk. Sh. 1

I CERTIFY THAT THIS ACTUAL SURVEY
WAS MADE ON THE GROUND IN ACCORDANCE
WITH THE LAND COURT INSTRUCTIONS OF 1959
IN JANUARY 1963.

Charles Clapp
SIGNATURE OF REGISTERED LAND SURVEYOR

APPROVAL UNDER SUBDIVISION
CONTROL LAW NOT REQUIRED

DATE: 7/8/65
Robert Clapp
CHAIRMAN PLANNING BOARD

RE-EXAMINED IN FIELD JULY 13, 1965

Charles Clapp