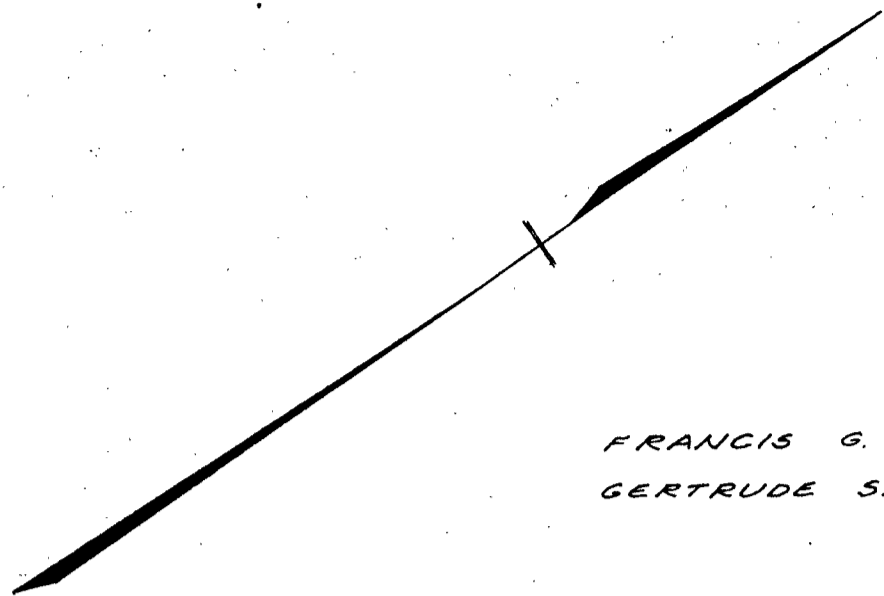


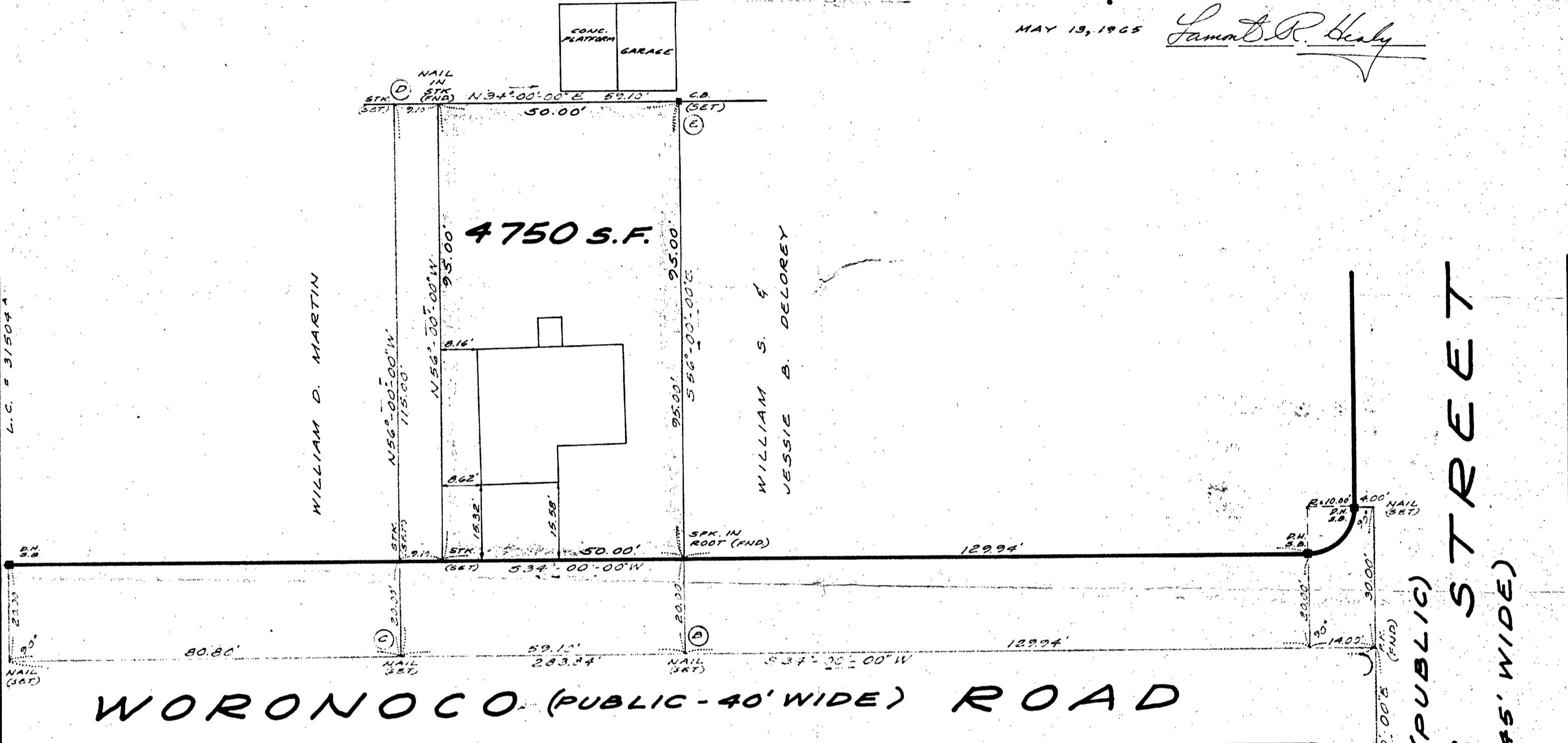
FIELD SURVEY TRAVERSE TABLE							
STA.	INTERIOR	BEARING	DIST.	N(+)	S(-)	E(+)	W(-)
C	90°-00'-00"	N56°-00'-00"W	115.000	95.339			64.307
D	90°-00'-00"	N34°-00'-00"E	59.100	48.996		33.048	
E	90°-00'-00"	S56°-00'-00"E	115.000		95.339	64.307	
B	90°-00'-00"	S34°-00'-00"W	59.100		48.996		33.048



FRANCIS G. &
GERTRUDE S. HUGHES

I CERTIFY THAT THIS ACTUAL SURVEY
WAS MADE ON THE GROUND IN ACCORDANCE
WITH THE LAND COURT INSTRUCTIONS OF 1959
BETWEEN MAY 10, AND MAY 13, 1965.

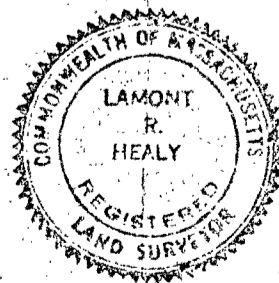
MAY 13, 1965 *Lamont R. Healy*



TOWN OF WEYMOUTH
PLANNING BOARD
APPROVED
William F. White

PLAN OF LAND IN
WEYMOUTH, MASS.
FOR
WILLIAM T. DALTON

SCALE: 1"=20' MAY 13, 1965



LAMONT R. HEALY, INC. - LAND SURVEYORS
50. WEYMOUTH, MASS.