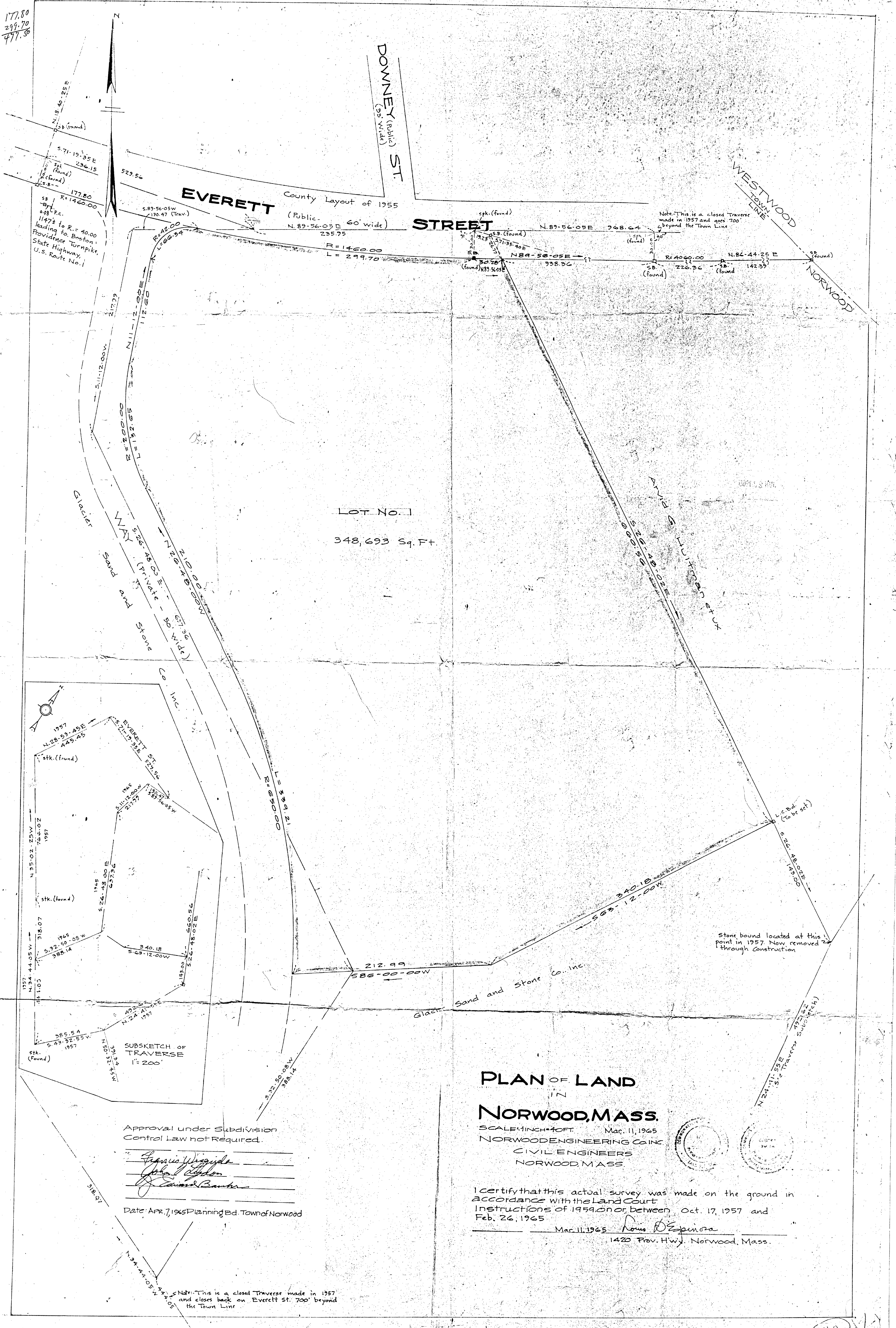


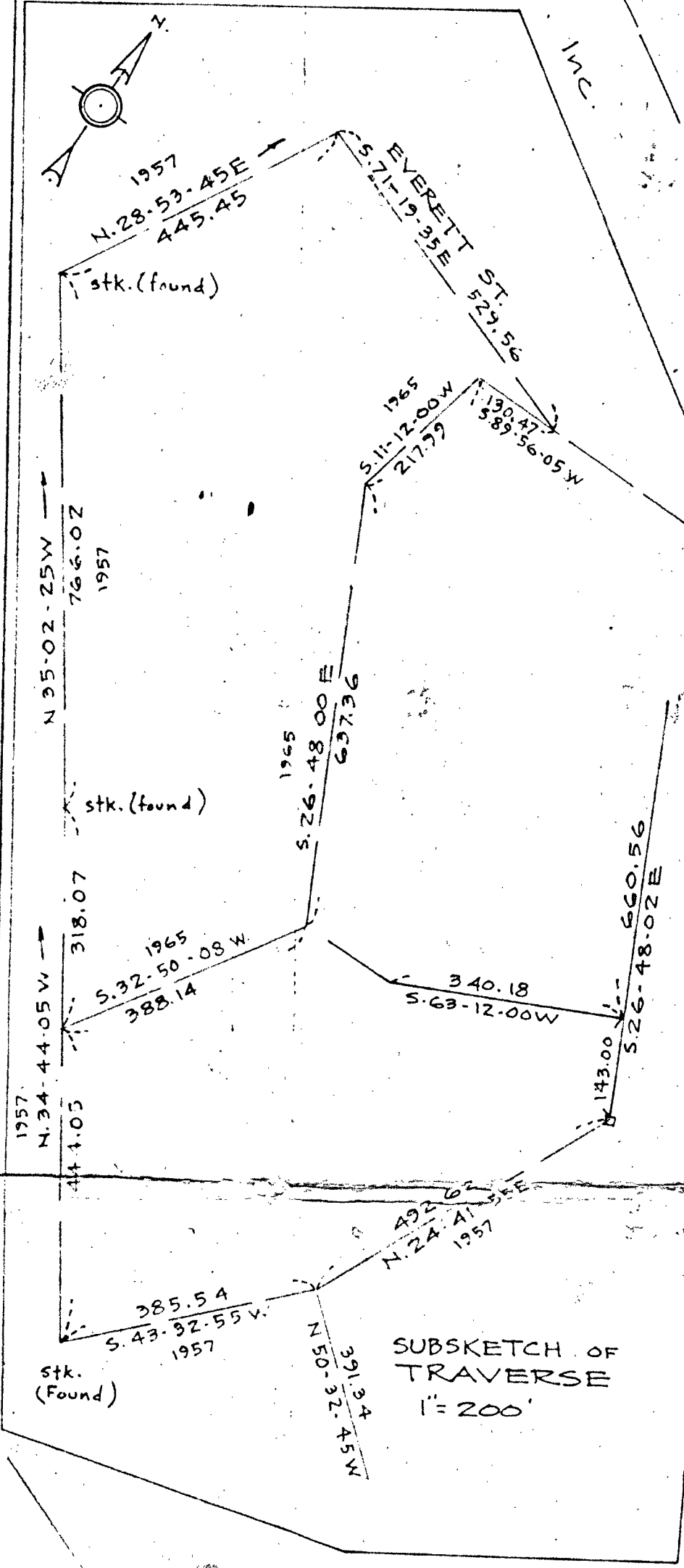
177.80  
299.70  
477.50



177.80  
By P.C.  
0.08 P.C.  
1147' to R. = 40.00  
Providence Turnpike,  
State Highway,  
U.S. Route No. 1

Note: This is a closed Traverse  
made in 1957 and goes 700'  
beyond the Town Line

LOT No. 1  
348,693 Sq. Ft.



Approval under Subdivision  
Control Law not Required.  
*Francis Wiggles*  
*John A. Gordon*  
*Edward Banks*

Date: APR 7, 1965 Planning Bd. Town of Norwood

PLAN OF LAND  
IN  
NORWOOD, MASS.  
SCALE: 1 INCH = 40 FT. Mar. 11, 1965  
NORWOOD ENGINEERING CO. INC.  
CIVIL ENGINEERS  
NORWOOD, MASS.

I certify that this actual survey was made on the ground in  
accordance with the Land Court  
Instructions of 1959. On or between Oct. 17, 1957 and  
Feb. 26, 1965

Mar. 11, 1965 *Rouso D'Episcopo*  
1420 Prov. Hwy., Norwood, Mass.

Note: This is a closed Traverse made in 1957  
and closes back on Everett St. 700'  
beyond the Town Line

570