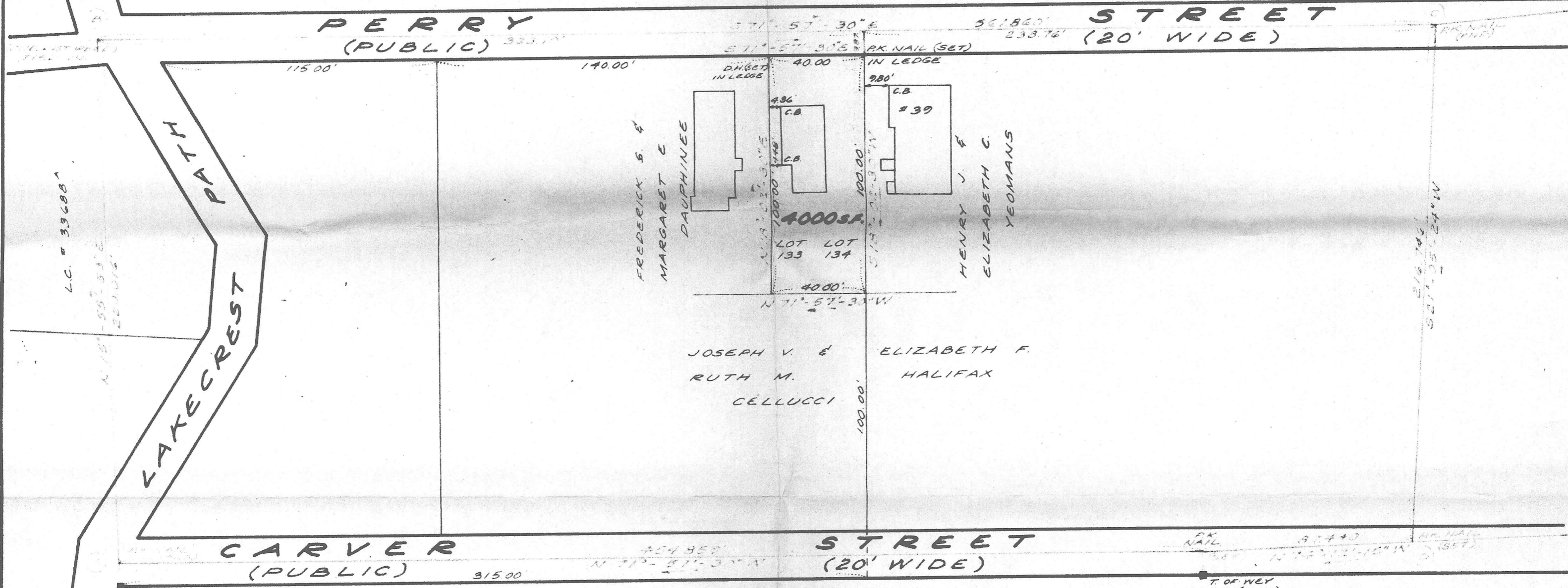


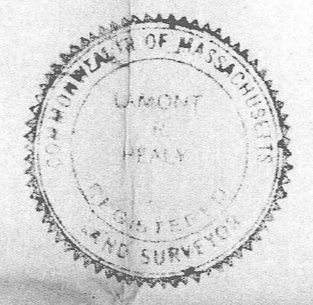
FIELD SURVEY TRAVERSE TABLE							
STA.	INTERIOR	BEARING	DIST.	N(+)	S(-)	E(+)	W(-)
A		92°-06'-37"					
		N15°-55'-53"E	220.016	211.565		60.391	
B		87°-53'-23"					
		S71°-57'-30"E	561.860		174.013	534.234	
C		86°-57'-06"					
		S21°-05'-24"W	216.746		202.228		77.993
D		95°-17'-39"					
		N74°-12'-15"W	87.440	23.802			84.138
E		177°-45'-15"					
		N71°-57'-30"W	454.859	140.874			432.494



I CERTIFY THAT THIS ACTUAL SURVEY  
 WAS MADE ON THE GROUND IN ACCORDANCE  
 WITH THE LAND COURT INSTRUCTIONS OF 1959  
 BETWEEN APR. , AND APR. 21, 1965.

APR 26, 1965 *Lamont R. Healy*

PLAN OF LAND IN  
 WEYMOUTH, MASS.  
 FOR  
 JOSEPH DUTTON  
 SCALE: 1"=40'  
 APR. 27, 1965



LAMONT R. HEALY, INC. - LAND SURVEYORS  
 50. WEYMOUTH, MASS.

TOWN OF WEYMOUTH  
 PLANNING BOARD  
 APRIL 26, 1965  
*Ralph A. Laven*  
 4/26/65  
 Vice