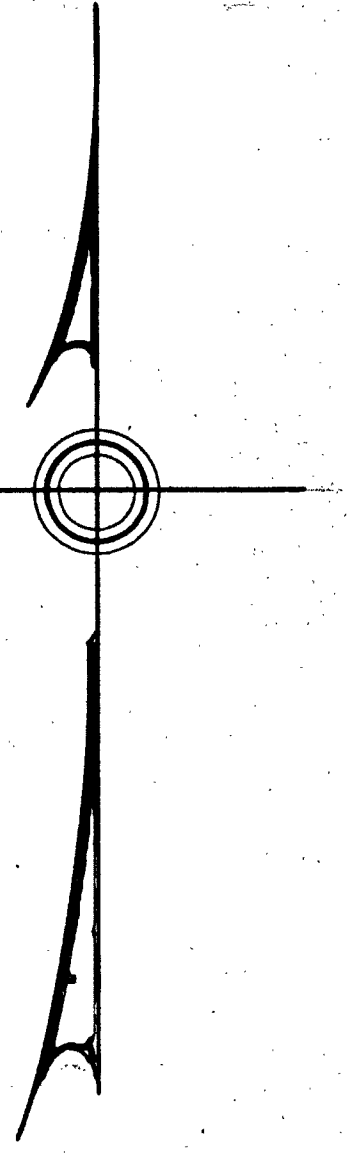
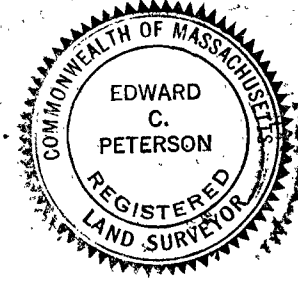
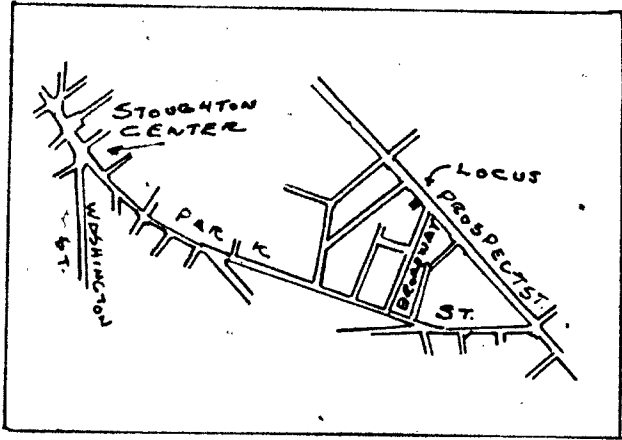


PLAN OF LAND IN STOUGHTON MASS.

SCALE 1"=20'

APRIL 2 1965

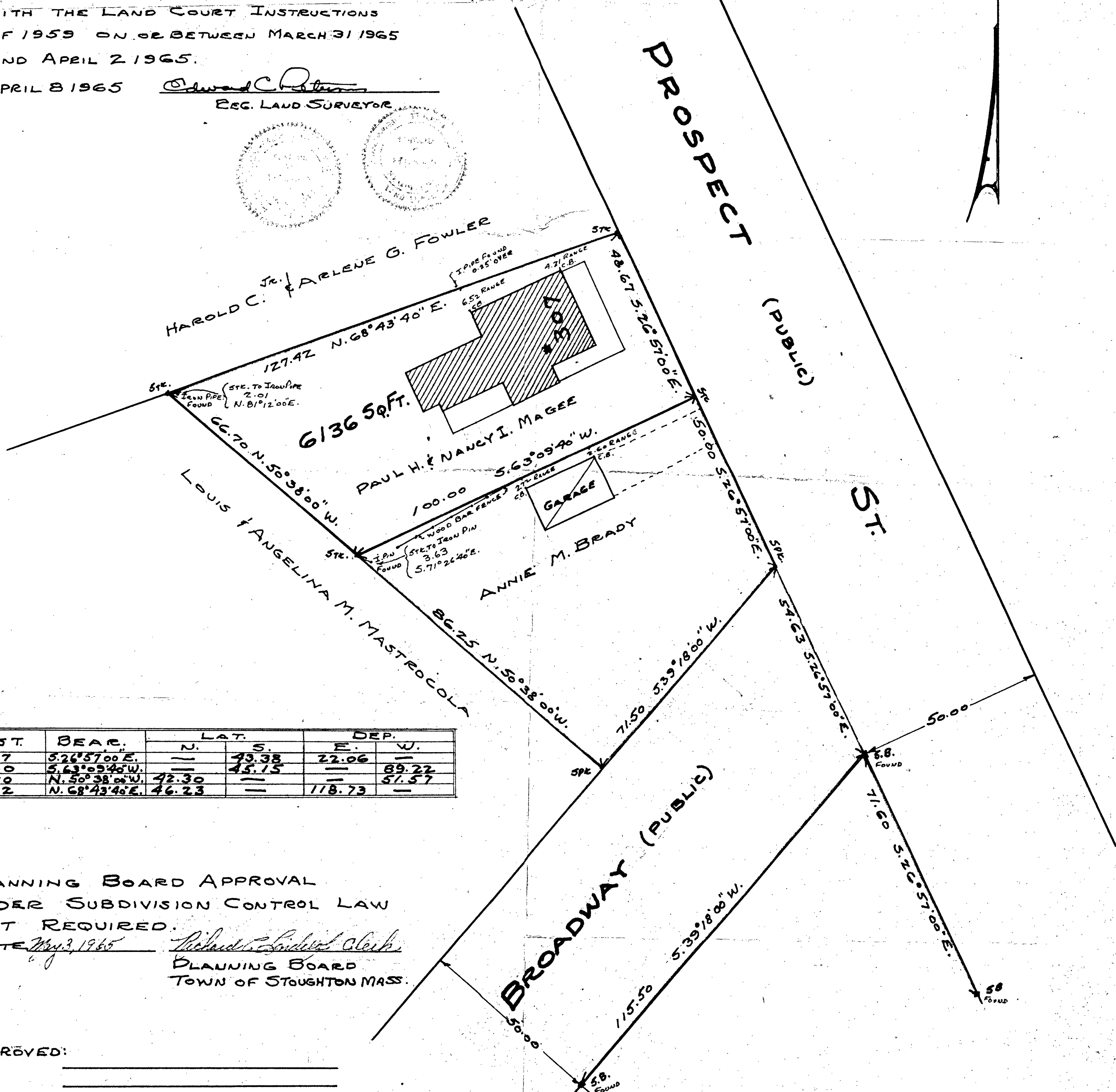
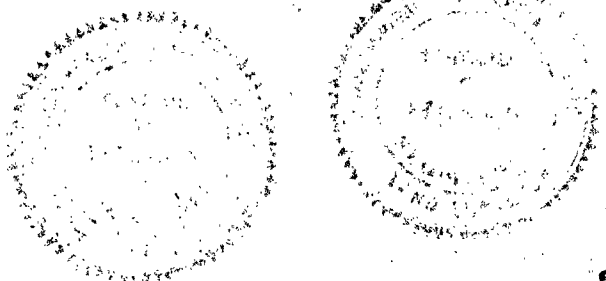
EDWARD C. PETERSON REG. LAND SURVEYOR
74 LINCOLN ST. STOUGHTON MASS.



I CERTIFY THAT THIS ACTUAL SURVEY
WAS MADE ON THE GROUND IN ACCORDANCE
WITH THE LAND COURT INSTRUCTIONS
OF 1959 ON OR BETWEEN MARCH 31 1965
AND APRIL 2 1965.

APRIL 8 1965

Edward C. Peterson
REG. LAND SURVEYOR



DIST.	BEAR.	LAT.		DEP.	
		N.	S.	E.	W.
48.67	S. 26° 57' 00" E.	—	43.38	22.06	—
100.00	S. 63° 09' 40" W.	—	45.15	—	89.22
66.70	N. 50° 38' 00" W.	42.30	—	—	51.57
127.42	N. 68° 43' 40" E.	46.23	—	118.73	—

PLANNING BOARD APPROVAL
UNDER SUBDIVISION CONTROL LAW
NOT REQUIRED.
DATE May 3, 1965 *Richard Lindner Clerk*
PLANNING BOARD
TOWN OF STOUGHTON MASS.

APPROVED:

DATE _____ BOARD OF HEALTH
TOWN OF STOUGHTON MASS.

LCOURT
CASE
21677 A