

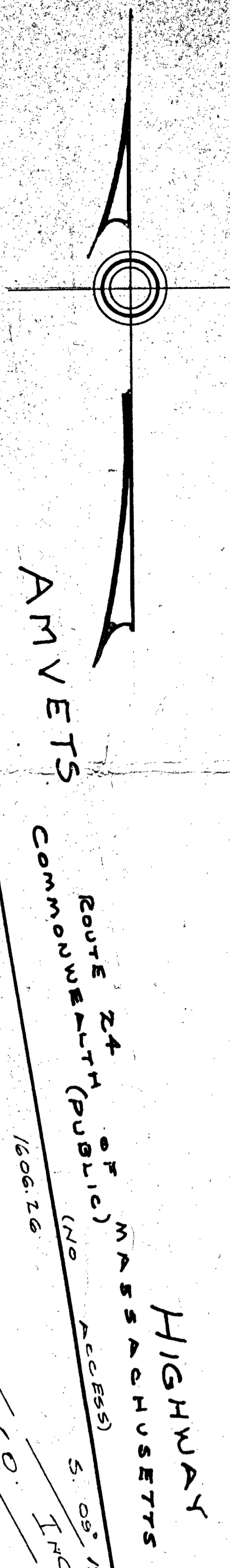
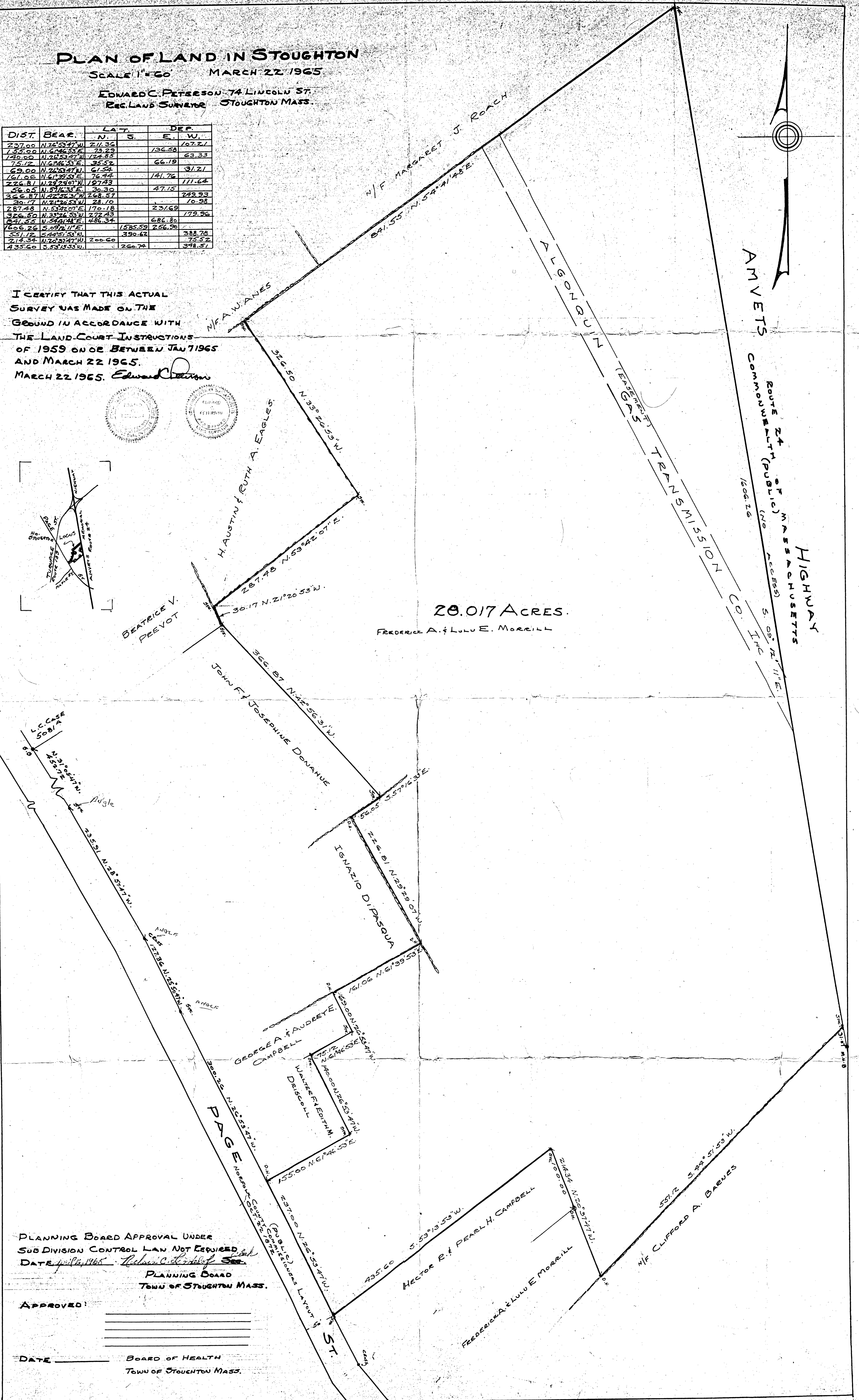
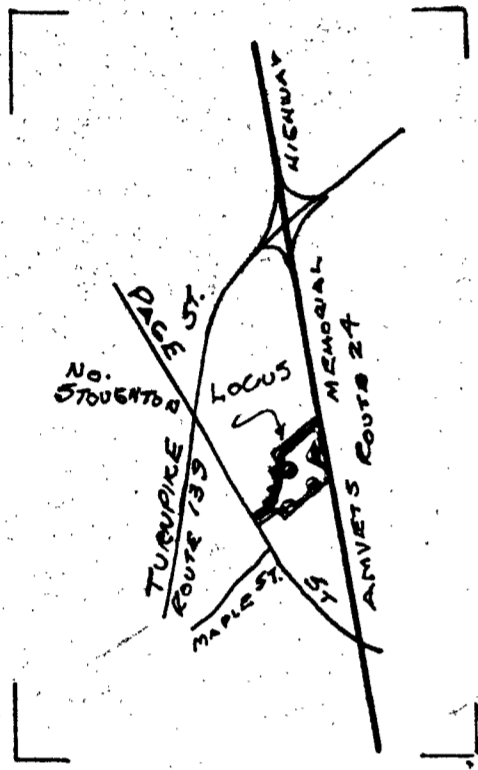
# PLAN OF LAND IN STOUGHTON

SCALE 1"=60' MARCH 22 1965

EDWARD C. PETERSON 74 LINCOLN ST.  
REG. LAND SURVEYOR STOUGHTON MASS.

DIST.	BEAR.	LAT.		DEP.	
		N.	S.	E.	W.
237.00	N.26°54'47"W	211.36		107.21	
154.00	N.64°46'53"E		73.29	136.58	
140.00	N.76°53'47"W	124.85		63.33	
75.12	N.61°46'33"E	35.52		66.19	
69.00	N.76°53'47"W	31.54		31.21	
161.08	N.61°39'51"E	76.44		141.76	
226.81	N.23°29'01"W	197.83		111.64	
56.95	N.51°16'33"E	30.30		47.15	
366.87	N.42°56'27"W	268.57		249.93	
20.17	N.71°26'53"W	28.10		10.98	
287.48	N.53°47'07"E	170.18		231.69	
326.50	N.33°26'53"N	272.43		179.96	
841.55	N.54°41'48"E	486.34		686.80	
1606.26	S.09°12'11"E		1585.59	256.90	
551.12	S.44°51'53"W		390.62	388.78	
214.34	N.76°07'47"W	200.60		75.52	
435.60	S.53°13'53"W	260.74		348.51	

I CERTIFY THAT THIS ACTUAL SURVEY WAS MADE ON THE GROUND IN ACCORDANCE WITH THE LAND COURT INSTRUCTIONS OF 1959 ON OR BETWEEN JAN 7 1965 AND MARCH 22 1965.  
MARCH 22 1965. *Edward Peterson*



PLANNING BOARD APPROVAL UNDER SUB DIVISION CONTROL LAW NOT REQUIRED  
DATE *April 16, 1965* *Richard C. Lord* Sec.  
PLANNING BOARD  
TOWN OF STOUGHTON MASS.

APPROVED: \_\_\_\_\_  
DATE \_\_\_\_\_ BOARD OF HEALTH  
TOWN OF STOUGHTON MASS.