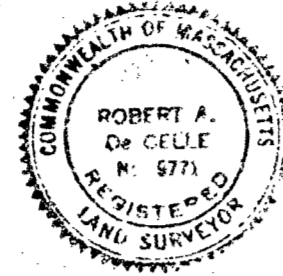


SUBDIVISION OF LAND  
**BLUE RIDGE**  
**RANDOLPH - MASS.**

SCALE 1" = 40' FEB 5, 1965  
 L. W. DeLyle Surveyors Inc.  
 LAND SURVEYORS  
 215 UNION ST. RANDOLPH  
 PROPERTY OWNER:

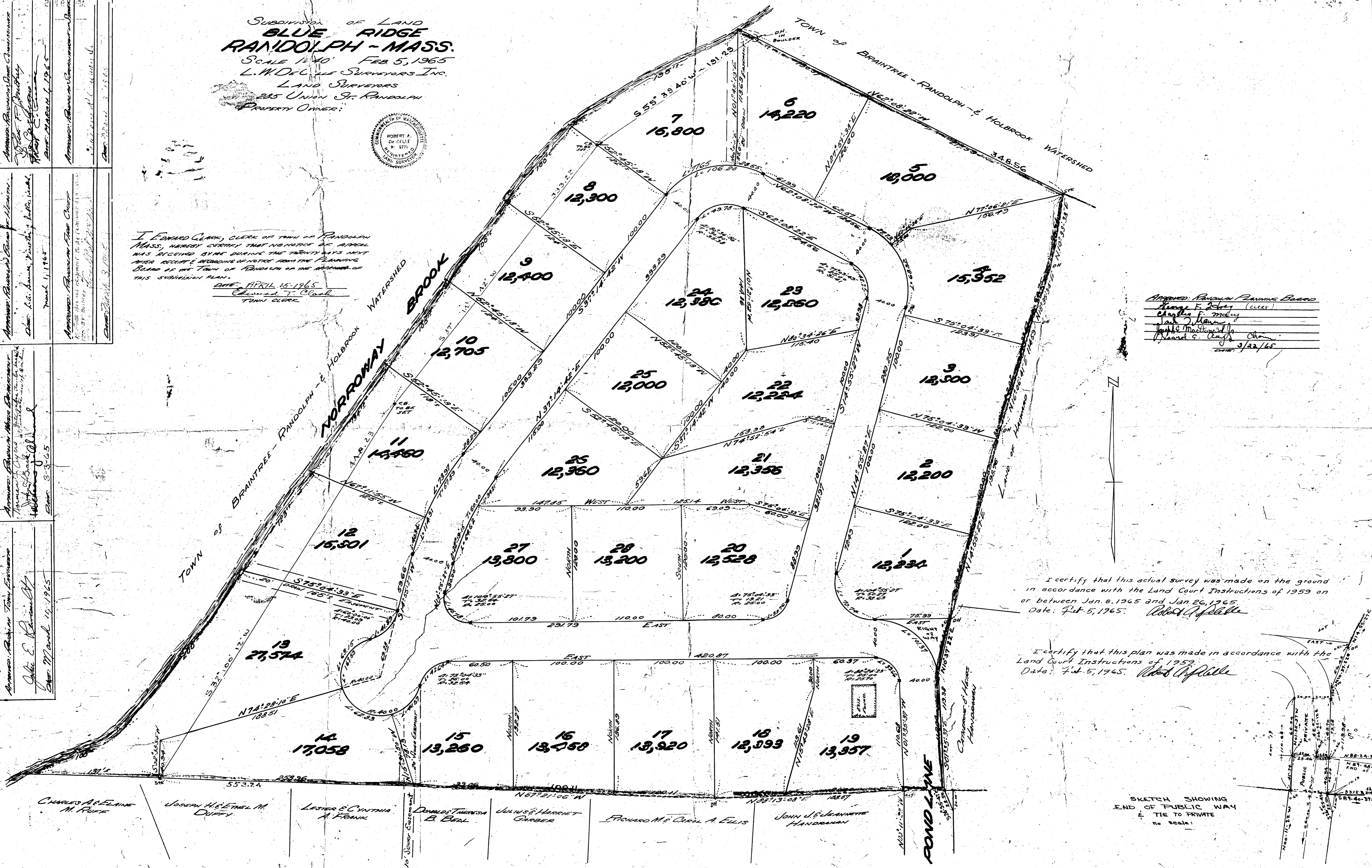


I, EDWARD CLARK, CLERK OF TOWN OF RANDOLPH MASS., HEREBY CERTIFY THAT NO NOTICE OF APPEAL WAS RECEIVED BY ME DURING THE TWENTY DAYS NEXT AFTER RECEIPT & RECORDING OF NOTICE FROM THE PLANNING BOARD OF THE TOWN OF RANDOLPH OF THE APPROVAL OF THIS SUBDIVISION PLAN.

DATE: APRIL 15, 1965  
 Edward T. Clark  
 TOWN CLERK

Approved: Planning Board  
 Charles F. Foley (Clerk)  
 Charles J. Meloy  
 Paul J. Hannon  
 Joseph MacDonnell Jr.  
 Richard S. Conley  
 DATE: 3/22/65

Approved: Planning Board Charles F. Foley March 4, 1965	Approved: Planning Board March 1, 1965
Approved: Planning Board March 1, 1965	Approved: Planning Board March 1, 1965
Approved: Planning Board March 1, 1965	Approved: Planning Board March 1, 1965
Approved: Planning Board March 1, 1965	Approved: Planning Board March 1, 1965
Approved: Planning Board March 1, 1965	Approved: Planning Board March 1, 1965
Approved: Planning Board March 1, 1965	Approved: Planning Board March 1, 1965
Approved: Planning Board March 1, 1965	Approved: Planning Board March 1, 1965
Approved: Planning Board March 1, 1965	Approved: Planning Board March 1, 1965
Approved: Planning Board March 1, 1965	Approved: Planning Board March 1, 1965
Approved: Planning Board March 1, 1965	Approved: Planning Board March 1, 1965



I certify that this actual survey was made on the ground in accordance with the Land Court Instructions of 1959 on or between Jan. 8, 1965 and Jan. 26, 1965. Date: Feb. 5, 1965. Robert A. DeCelle

I certify that this plan was made in accordance with the Land Court Instructions of 1959. Date: Feb. 5, 1965. Robert A. DeCelle

- CHARLES A. FELINE M. RUFF
- JOSEPH A. & ETHEL M. DUFFY
- LESTER E. & CYNTHIA A. FRANK
- DONALD & THERESA B. BERAL
- JULIUS & HARRIET GARBER
- RICHARD M. & CAROL A. ELLIS
- JOHN D. & JEANNETTE HANDRMAN

SEWER EASEMENT  
**RANDOLPH, MASS.**

SCALE: 1" = 40' FEB. 23, 1965  
L.W. DeCelle Surveyors Inc.  
LAND SURVEYORS  
285 UNION ST., RANDOLPH

Property Owner:  
Donald & Theresa B. Beal  
STEARNS DRIVE  
RANDOLPH, MASS.

SEWER BOARD APPROVAL NOT REQUIRED  
UNDER THE SUBDIVISION CONTROL LAW.

*Robert A. DeCelle*  
*Robert A. DeCelle*

*J. Carluccio*

DATE: MARCH 1, 1965

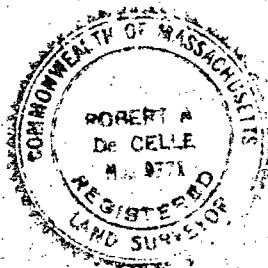
PLANNING BOARD APPROVAL NOT REQUIRED  
UNDER THE SUBDIVISION CONTROL LAW.

*Howard E. Avery & Chas. J. ...*  
*Ed. J. ...*  
*Charles F. Macy*  
*Joseph E. MacDonald Jr.*

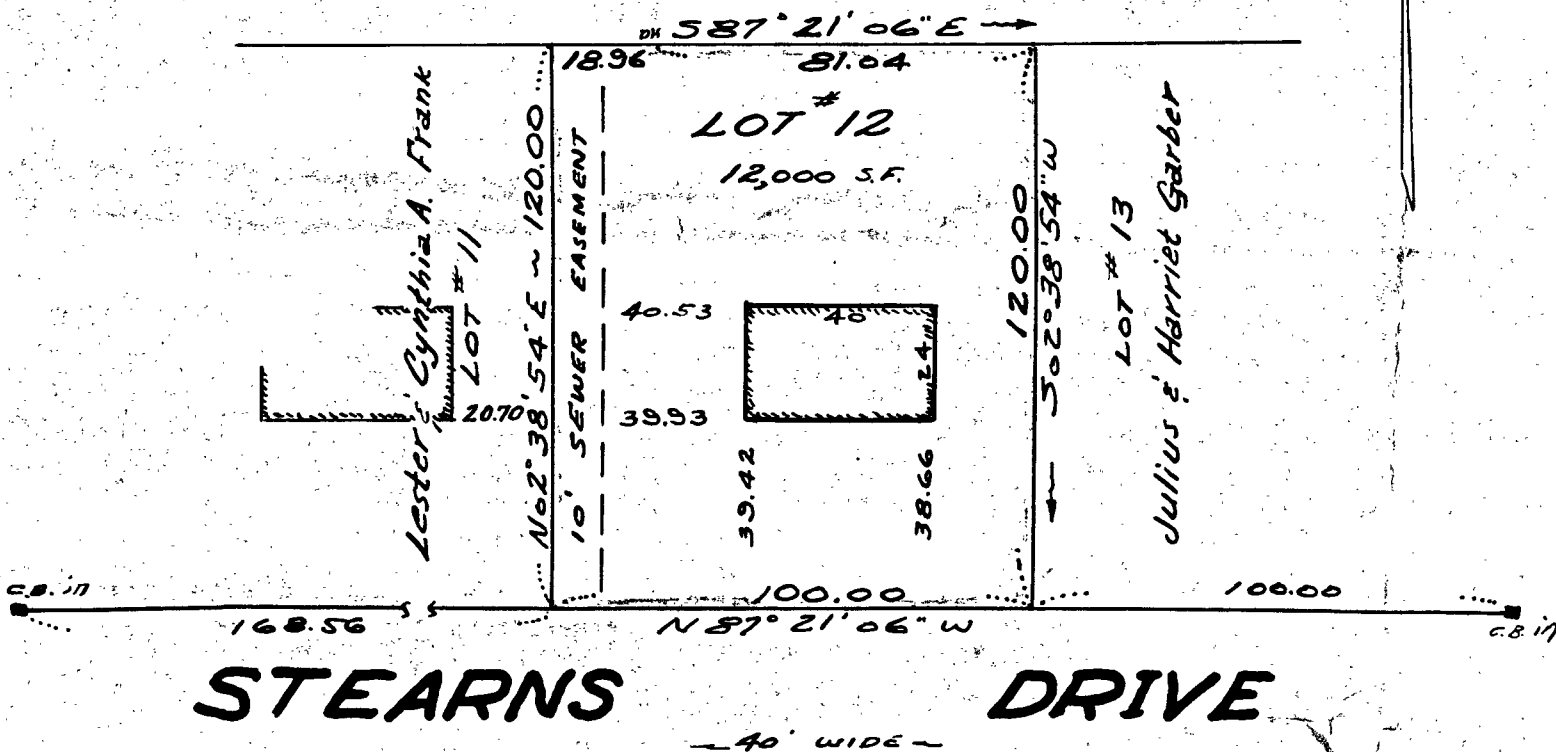
DATE: 3/15/65

NOTE:

See subdivision of Land  
by L.W. DeCelle Surveyors Inc.  
dated: Oct. 6, 1954  
Approved: Oct. 19, 1954



CHIN T. YEW



**STEARNS DRIVE**

— 40' WIDE —

I CERTIFY THAT THIS PLAN WAS MADE IN ACCORDANCE  
WITH THE LAND COURT INSTRUCTIONS OF 1959.

DATE: April 17, 1965 *Robert A. DeCelle*