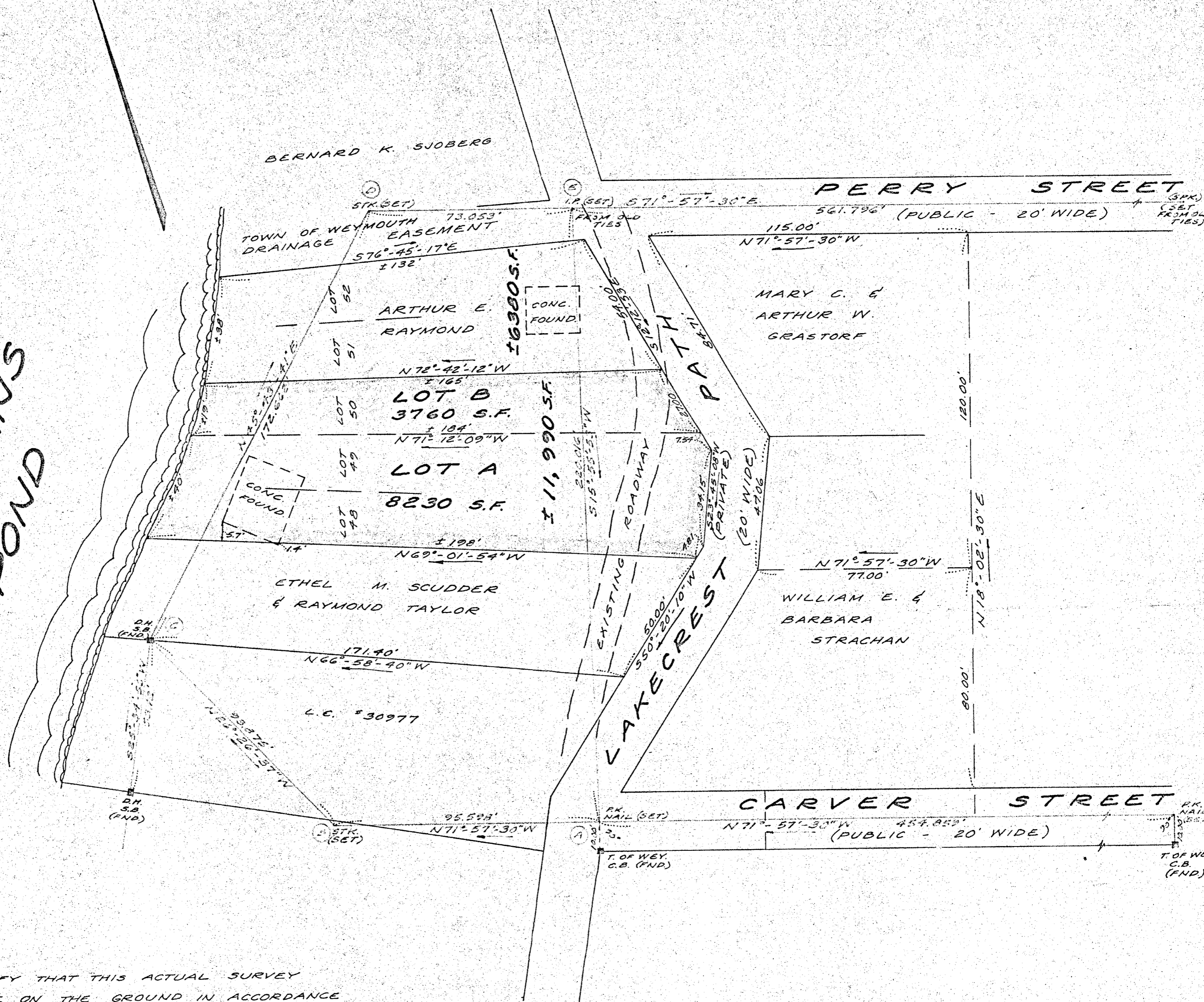


FIELD SURVEY TRAVERSE TABLE							
STA.	INTERIOR ANGLE	BEARING	DIST.	N(+)	S(-)	E(+)	W(-)
A	87°-53'-23"	N71°-57'-30"W	95.598	22.608			90.898
B	134°-29'-07"	N26°-26'-37"W	93.875	84.053			41.804
C	107°-49'-42"	N45°-43'-41"E	172.662	120.529		123.632	
D	117°-41'-11"	S71°-57'-30"E	73.053		22.625	69.461	
E	92°-06'-37"	S15°-55'-53"W	220.016		211.565		60.391

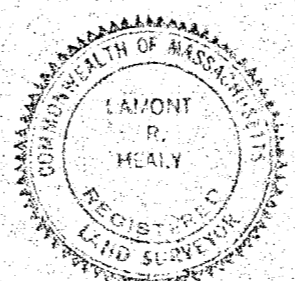
WHITMANS POND



I CERTIFY THAT THIS ACTUAL SURVEY WAS MADE ON THE GROUND IN ACCORDANCE WITH THE LAND COURT INSTRUCTIONS OF 1959 BETWEEN FEB. 2, AND FEB. 6, 1965.

FEB. 15, 1965 Samuel R. Healy

PLAN OF LAND IN WEYMOUTH, MASS. FOR ARTHUR E. RAYMOND SCALE: 1"=30' FEB. 10, 1965



TOWN OF WEYMOUTH PLANNING BOARD APPROVAL UNDER THE SUBDIVISION CONTROL ACT REQUIRED 3/15/65 William F. White

TASSELL & HEALY - LAND SURVEYORS 50. WEYMOUTH, MASS.