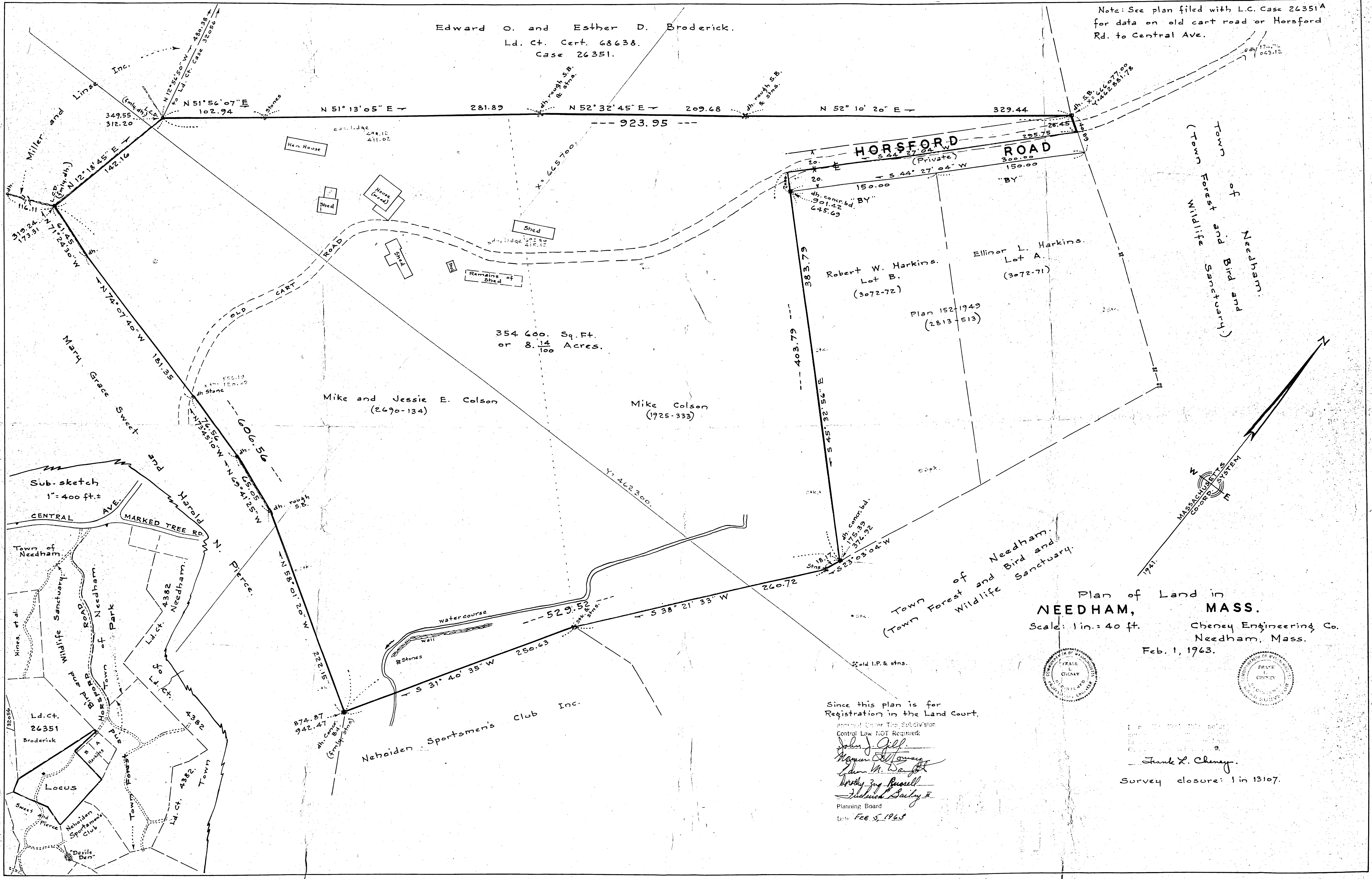
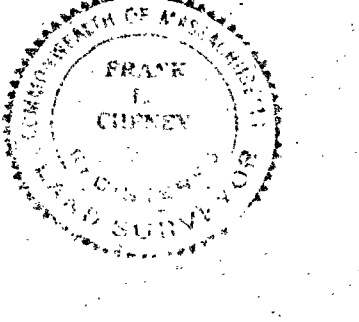
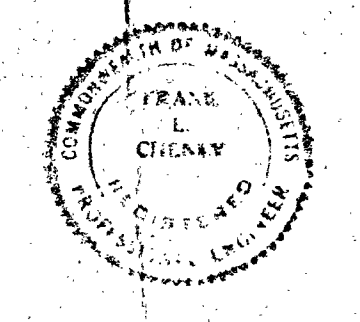


Edward O. and Esther D. Broderick.
 Ld. Ct. Cert. 68638.
 Case 26351.

Note: See plan filed with L.C. Case 26351A
 for data on old cart road or Horsford
 Rd. to Central Ave.



Plan of Land in
NEEDHAM, MASS.
 Scale: 1 in. = 40 ft.
 Cheney Engineering Co.
 Needham, Mass.
 Feb. 1, 1963.



Since this plan is for
 Registration in the Land Court,
 approval under the Subdivision
 Control Law NOT Required.
 John J. Gill
 Mayor of Needham
 Edward W. Wray
 Deputy Mayor
 Planning Board
 Date: Feb. 5, 1963

Frank L. Cheney.
 Survey closure: 1 in 13107.