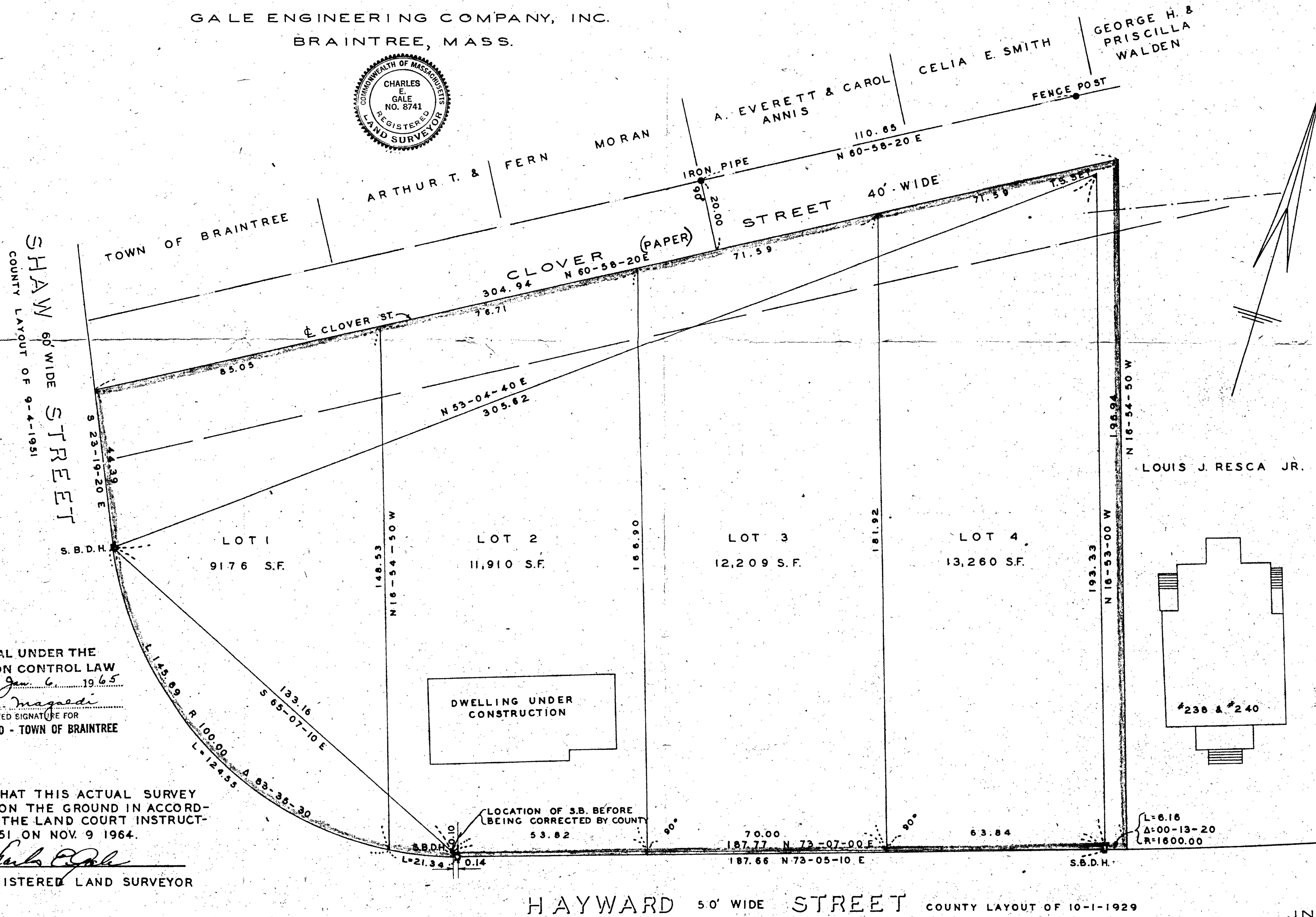
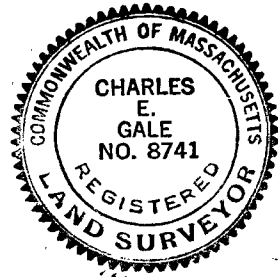


SUBDIVISION
PLAN OF LAND IN
BRAINTREE, NORFOLK CO., MASS.

SCALE: 1"=20'

DEC. 8, 1964

GALE ENGINEERING COMPANY, INC.
BRAINTREE, MASS.



APPROVAL UNDER THE
SUBDIVISION CONTROL LAW
NOT REQUIRED *Jan 6 1965*
Joseph M. Magaldi
AUTHORIZED SIGNATURE FOR
PLANNING BOARD - TOWN OF BRAINTREE

I CERTIFY THAT THIS ACTUAL SURVEY
WAS MADE ON THE GROUND IN ACCORD-
ANCE WITH THE LAND COURT INSTRUCT-
IONS OF 1951 ON NOV. 9 1964.

Charles E. Gale
REGISTERED LAND SURVEYOR

HAYWARD 50' WIDE STREET COUNTY LAYOUT OF 10-1-1929

JN 199A W.G.H.