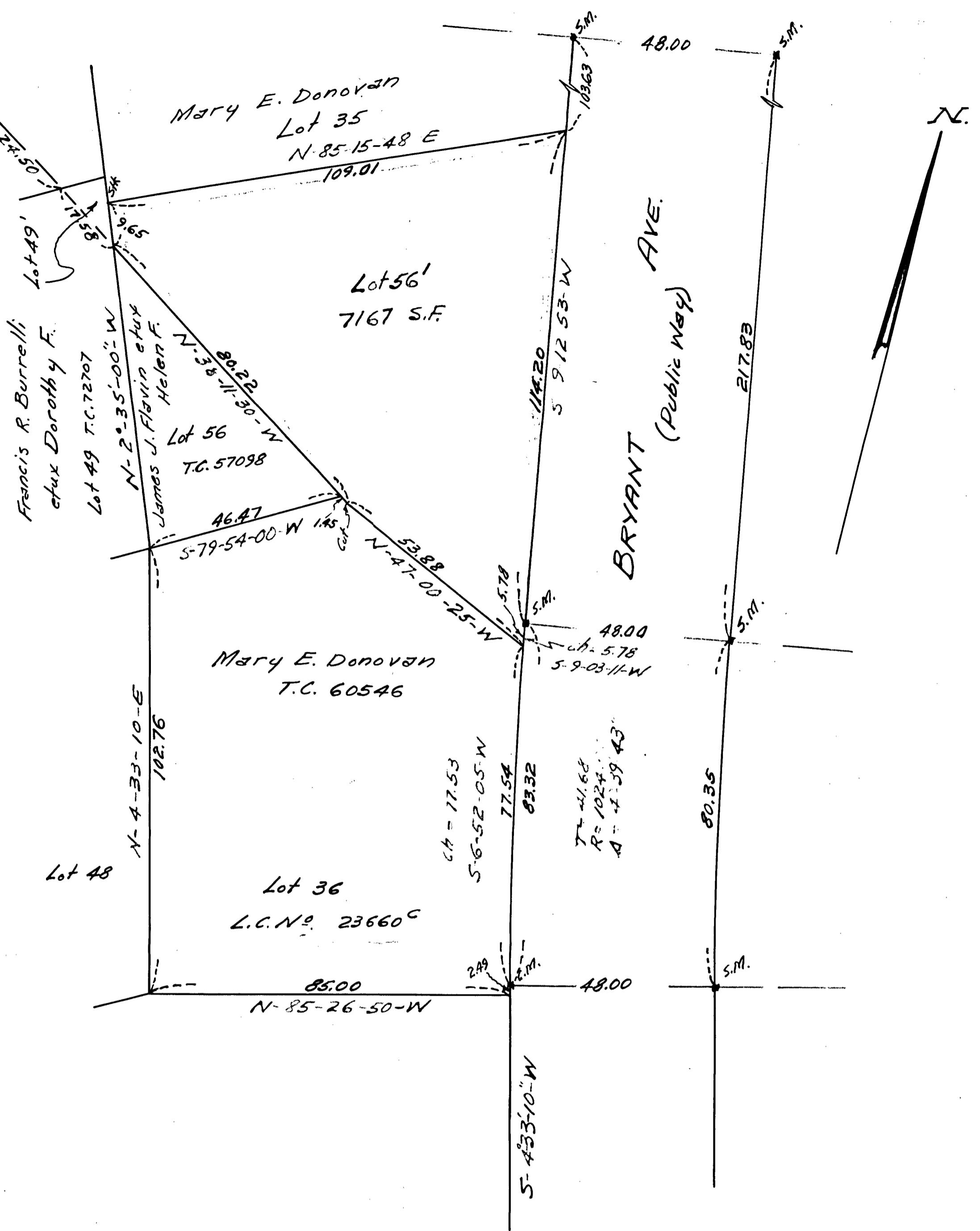


BEARING	SINE	COSINE	DIST.	N	S	E	W
N-85-15-48-E	.99658475	.08257629	109.01	9.002			
S-9-12-53-W	.16013483	.98709515	114.20		11.2726	108.638	18.287
S-9-03-11-W	.15734899	.98754306	5.78		5.709		.909
N-47-00-25-W	.73143636	.68190971	53.88	36.741			39.410
N-38-11-30-W	.61829409	.78594683	80.22	63.049			48.600
N-2-35-00-W	.04507240	.99898372	9.65	9.640			.435
			118.432	118.434		108.638	108.641



PLAN OF LAND IN QUINCY
SCALE: 1"=20' JANUARY 1965
GEORGE BAROUD - SURVEYOR

Approval under Subdivision
 Control Law not required.
 Date: 1/22/65
Walter G. Smith
 Chairman - Planning Board

I certify that this plan was made
 in accordance with Land Court
 Instructions of 1959.
 Date: January 21, 1965
George Baroud
 Surveyor
 24 Chase St. - Quincy, Mass.