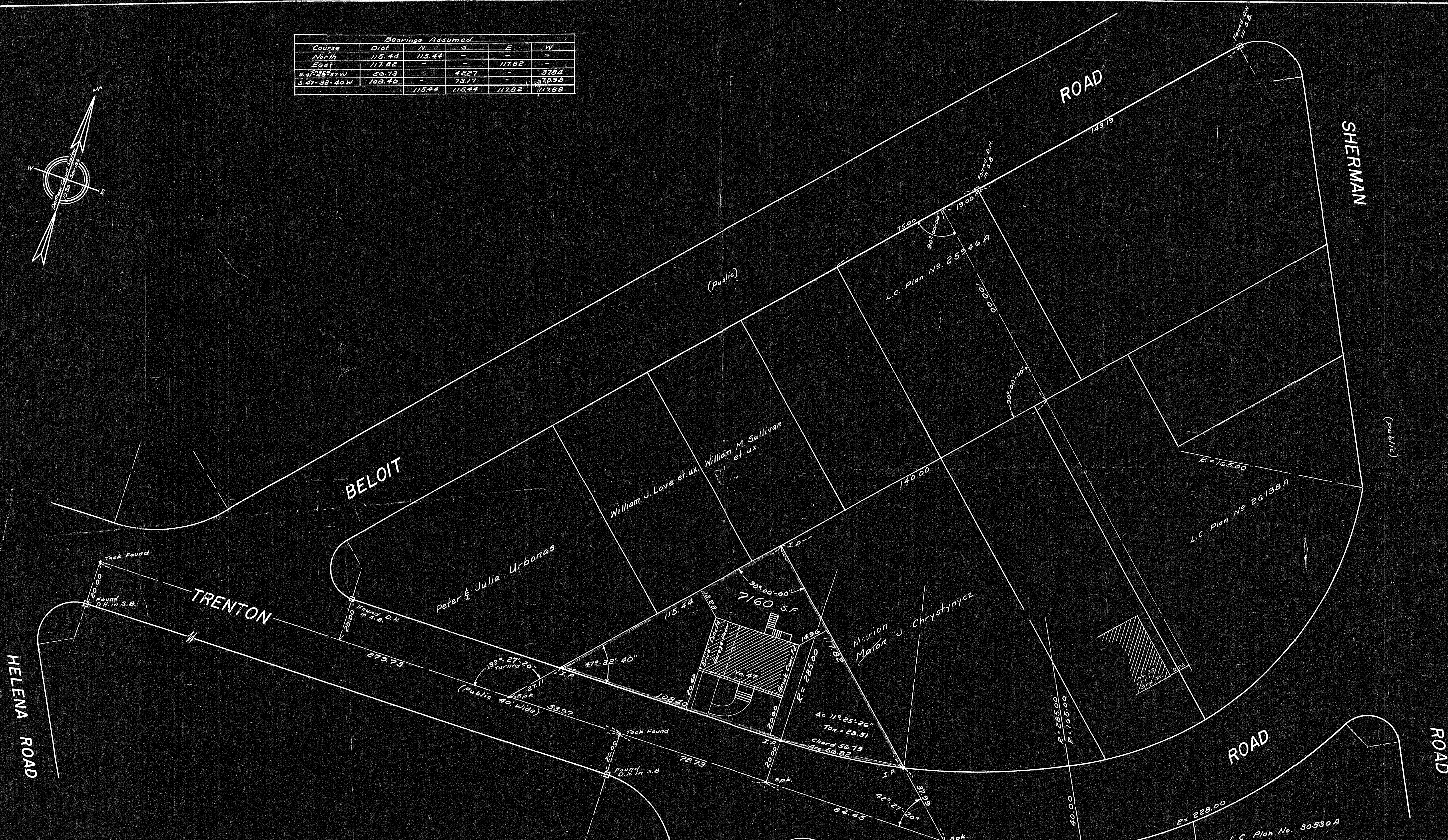
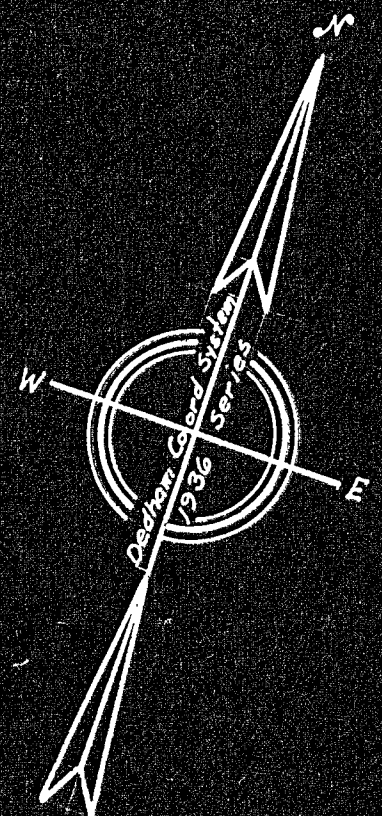


Course	Dist	Bearings Assumed			
		N	S	E	W
North	115.44	115.44	-	-	-
East	117.82	-	-	117.82	-
S. 47° 25' 57" W	56.73	-	42.27	-	37.84
S. 47° 32' 40" W	108.40	-	73.17	-	72.99
		115.44	115.44	117.82	117.82



**PLAN OF LAND DEDHAM, MASS.**  
 Scale: 20 feet to an inch Jan. 2, 1965  
 Francis M. Hugh, Surveyor  
 39 Cornell St.  
 Roslindale, Mass.



STERLING ROAD

33590 A  
 MAY BE FILED  
 2-9-65 R.C.C.  
 Date By

I certify that this actual survey was made on the ground in accordance with the Land Court Instruction of 1959 on Jan. 2, 1965 Francis M. Hugh.

L.C. Plan No. 30530 A  
 APPROVAL UNDER SUBDIVISION CONTROL LAW NOT REQUIRED  
 DATE 2/8/65  
 Joseph J. Ballin  
 MEMBER OF THE DEDHAM P.L.M. BOARD

Note: Being Lots 388, 389 and Part of 390 on Plan by John S. Crossman Dated June 1914 and Rec. Norfolk Reg. of Deeds Plan Book 72 Plan 3473