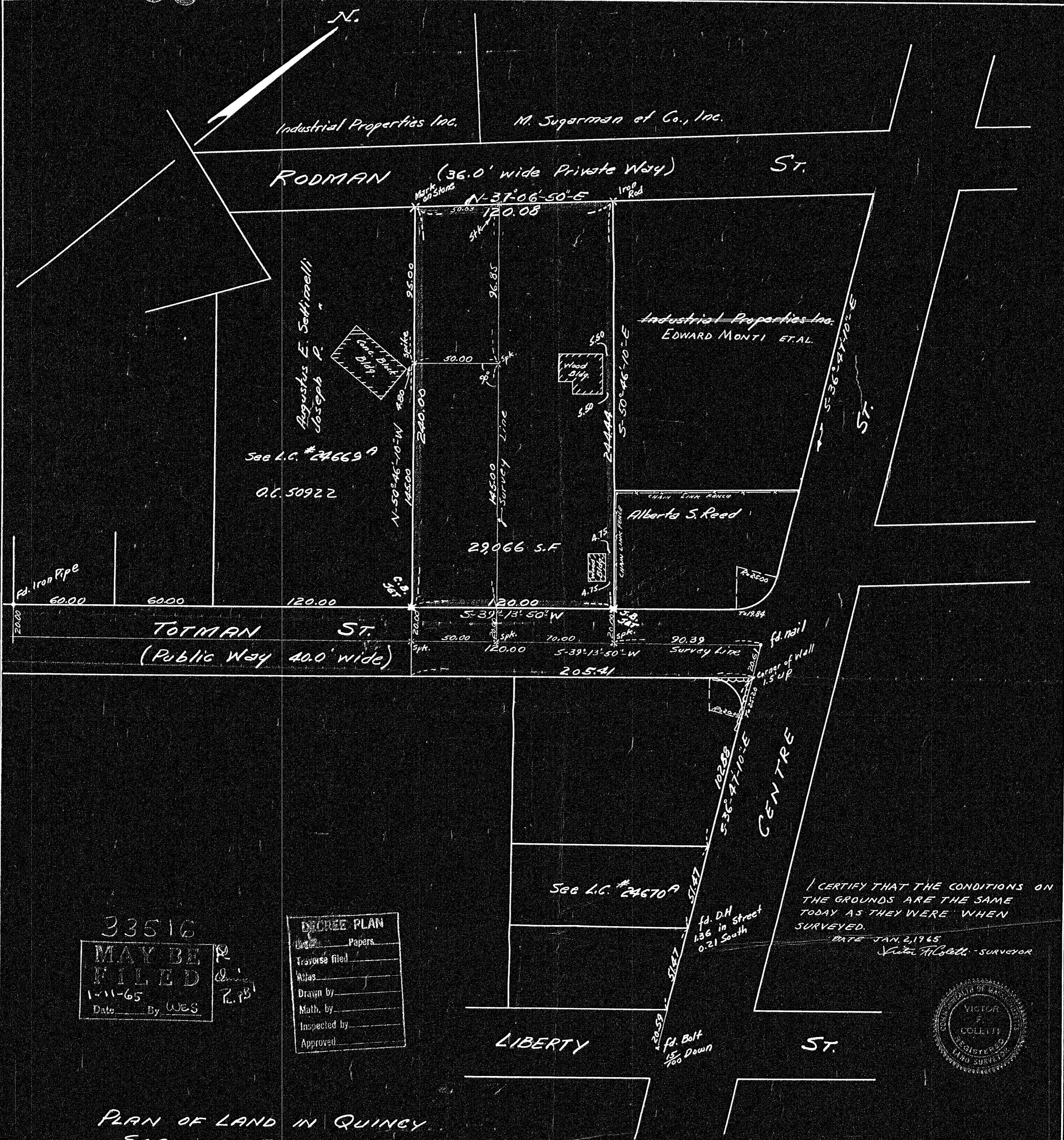


33516A



33516  
 MAY BE FILED  
 1-11-65  
 Date By WES

DEED PLAN

Books \_\_\_\_\_ Papers \_\_\_\_\_

Traverse filed \_\_\_\_\_

Atlas \_\_\_\_\_

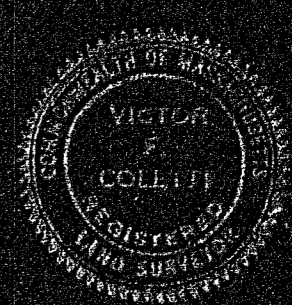
Drawn by \_\_\_\_\_

Math. by \_\_\_\_\_

Inspected by \_\_\_\_\_

Approved \_\_\_\_\_

I CERTIFY THAT THE CONDITIONS ON THE GROUNDS ARE THE SAME TODAY AS THEY WERE WHEN SURVEYED.  
 DATE JAN. 2, 1965  
 Warren D. Nichols - SURVEYOR



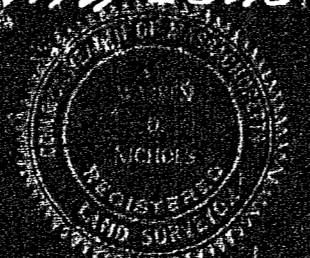
PLAN OF LAND IN QUINCY  
 SCALE: 40 FEET TO AN INCH  
 NOVEMBER 1963

Warren D. Nichols - Surveyor  
 29 Seville St, Quincy, Mass.

Approval under Subdivision Control Law not required.  
 Date: Nov. 8, 1963

*James E. [Signature]*  
 Director of Planning

I certify that this actual survey was made on the ground in accordance with Land Court Instructions of 1959 on Date Oct. 19 & 26 1963



*Warren D. Nichols*  
 Surveyor

Bearing	Sin	Cos	DIST.	N	S	E	W
S-39-13-50-W	.63244249	.77460732	120.00		92.953		75.893
N-50-46-10-W	.77460732	.63244249	240.00	151.786			185.906
N-37-06-50-E	.60340131	.79743768	120.08	95.756		72.456	
S-50-46-10-E	.77460732	.63244249	244.44		154.574	189.345	
				247.542	247.547	261.801	261.799

33516A