

APPROVAL UNDER THE SUBDIVISION CONTROL
LAW NOT REQUIRED
DEDHAM PLANNING BOARD

(Paul Bartlett Co.)
P. Howard Hagan
William P. ...

DATE: 11/33/64

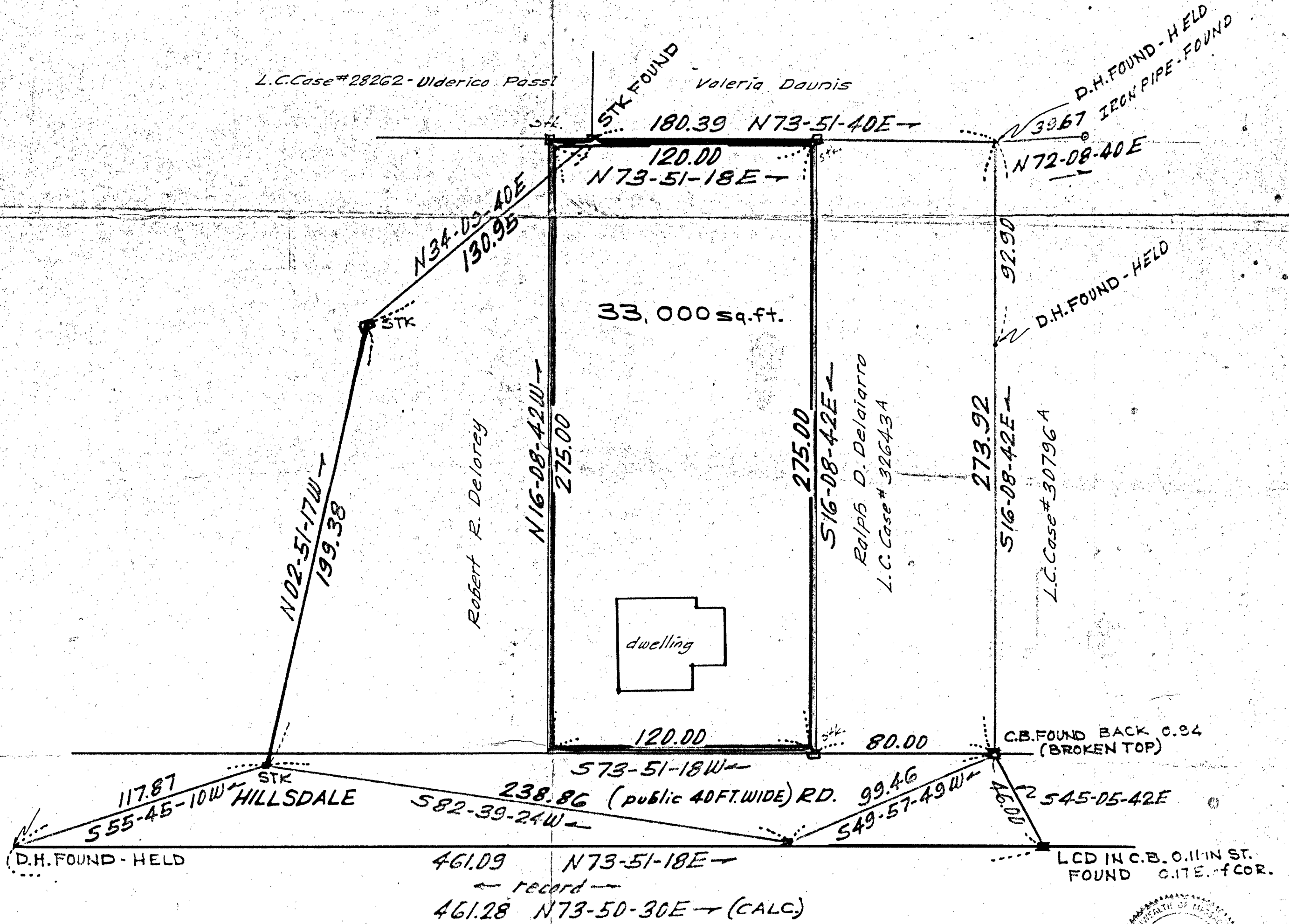
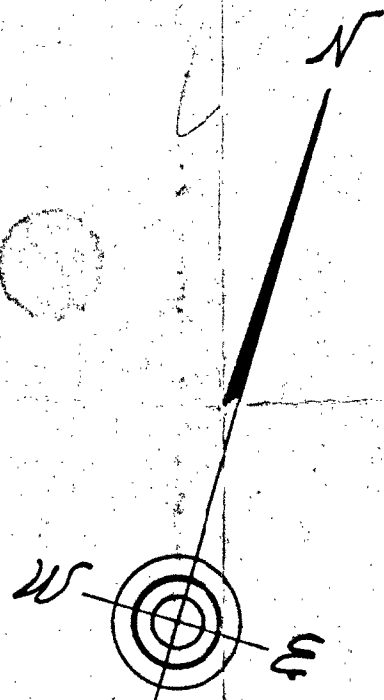
PLAN OF LAND
DEDHAM MASS.
SCALE: 1 IN. = 40 FT. NOV. 14, 1964.
STACY ENG. CO.
NATICK, MASS.

Traverse

273.92	N16-08-42W	263.12		76.17
180.39	S73-51-40W		50.14	173.28
130.95	S34-09-40W		108.36	75.53
199.38	S02-51-17E		199.13	9.93
238.86	N82-39-24E	30.53		236.90
99.46	N49-57-49E	63.98		76.15
		357.63	357.63	322.98

Property Line Traverse

120.00	N73-51-18E	33.37		115.27
275.00	S16-08-42E		264.15	76.47
120.00	S73-51-18W		33.37	115.27
275.00	N16-08-42W	264.15		76.47



I certify that this actual survey was made on the ground in accordance with the Land Court Instructions of 1959 between April 1963 & Nov. 1964.

Robert E. Stacy, Surveyor
Silvester St., Natick, Mass.
William A. Scheibl
Melvin Rd., Natick, Mass.

