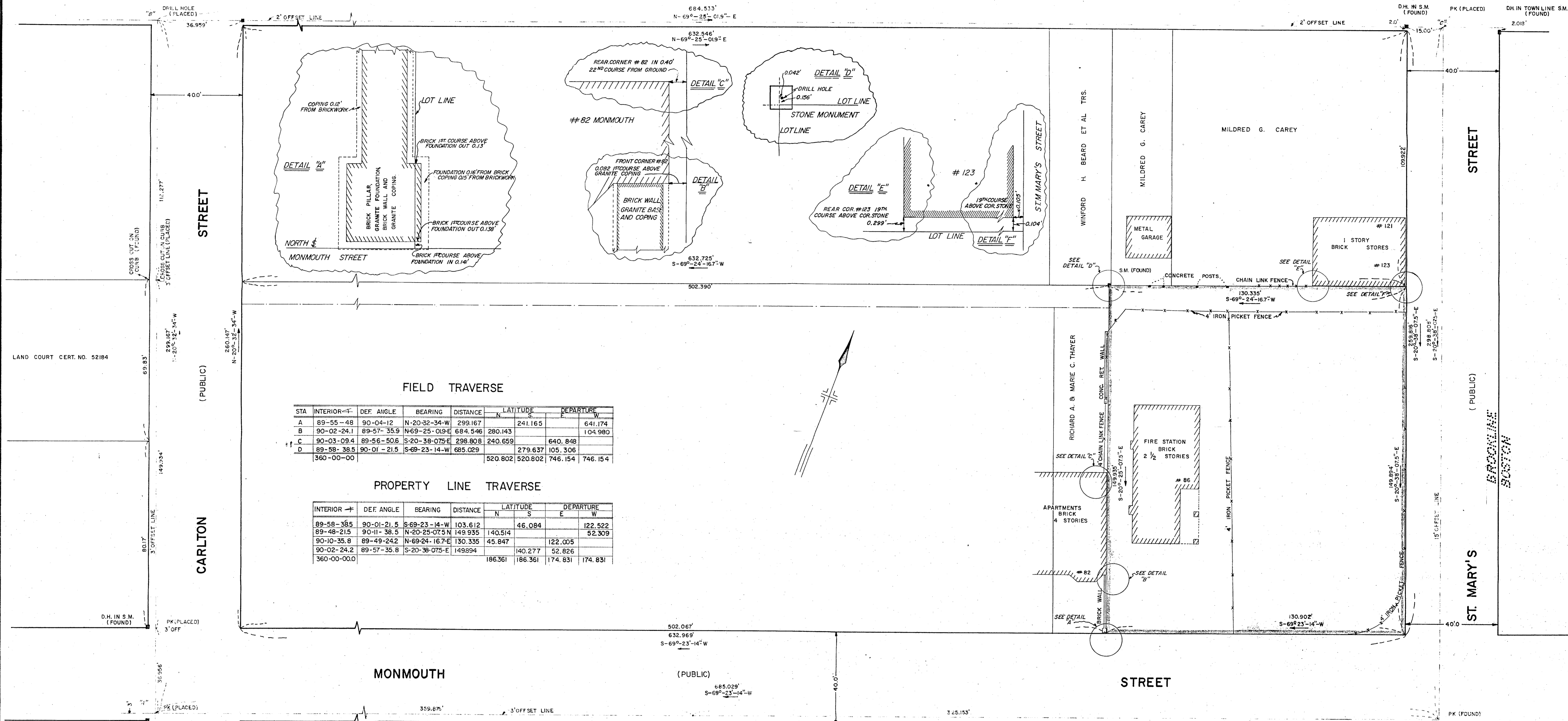


BEACON STREET (PUBLIC) STREET



FIELD TRAVERSE

STA	INTERIOR	DEF. ANGLE	BEARING	DISTANCE	LATITUDE		DEPARTURE	
					N	S	E	W
A	89-55-48	90-04-12	N-20-32-34-W	299.167		241.165		641.174
B	90-02-24.1	89-57-35.9	N-69-25-01.9-E	684.546	280.143			104.980
C	90-03-09.4	89-56-50.6	S-20-38-07.5-E	298.808	240.659		640.848	
D	89-58-38.5	90-01-21.5	S-69-23-14-W	685.029		279.637	105.306	
	360-00-00				520.802	520.802	746.154	746.154

PROPERTY LINE TRAVERSE

INTERIOR	DEF. ANGLE	BEARING	DISTANCE	LATITUDE		DEPARTURE	
				N	S	E	W
89-58-38.5	90-01-21.5	S-69-23-14-W	103.612		46.084		122.522
89-48-21.5	90-11-38.5	N-20-25-07.5-N	149.935	140.514			52.309
90-10-35.8	89-49-24.2	N-69-24-16.7-E	130.335	45.847		122.005	
90-02-24.2	89-57-35.8	S-20-38-07.5-E	149.994		140.277	52.826	
	360-00-00.0			186.361	186.361	174.831	174.831

I CERTIFY THAT THIS ACTUAL SURVEY WAS MADE ON THE GROUND IN ACCORDANCE WITH THE LAND COURT INSTRUCTIONS OF 1959 ON OR BETWEEN FEBRUARY 5, 1964 AND APRIL 29, 1964

Walter A. Endrey
REGISTERED LAND SURVEYOR

APPROVAL UNDER THE SUBDIVISION CONTROL LAW NOT REQUIRED:

SIGNED *William D. McHugh*
CLERK
BROOKLINE PLANNING BOARD
DATE *6/11/64*

PLAN OF LAND IN BROOKLINE MASS.

SCALE: 1 INCH = 20 FEET MAY 29, 1964

LAND COURT TRANSFER CERT. NO. 69129

MONMOUTH (PUBLIC) COURT