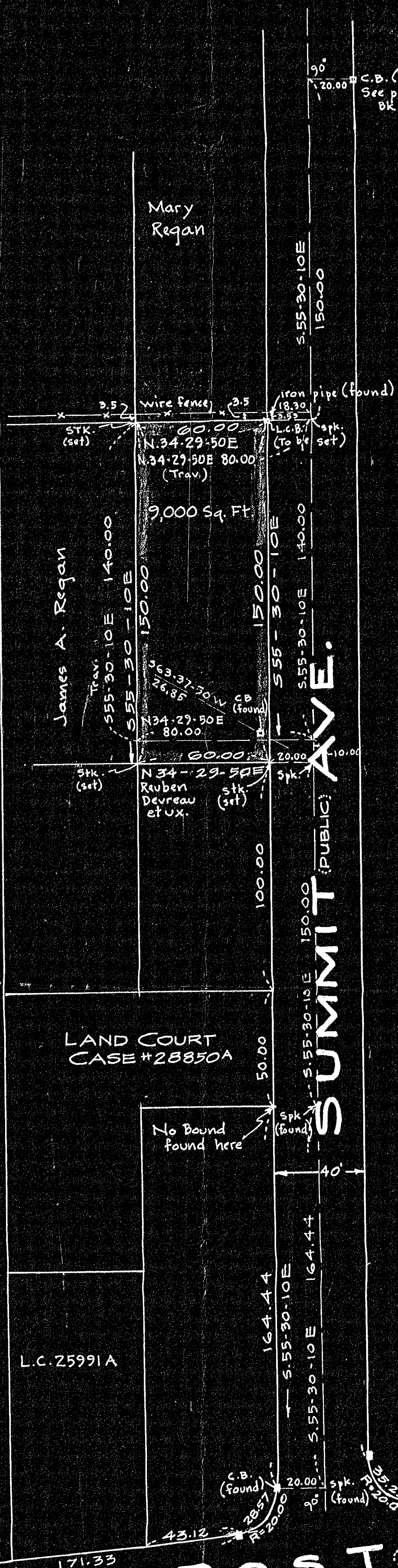


WOODLAND ROAD (PRIVATE)

SUMMIT AVENUE (PUBLIC)

OLD POST RD. (PUBLIC; 40' wide)



C.B. (found)
See plan No. 19, 1957
BK 3534, P. 575

LAND COURT CASE #28850A

33442^A

MAY BE FILED
Nov 25 64
Date By Jwe

Walpole
Sh. D-10

Note: This lot does not comply with the zoning regulation of the Town of Walpole.

Approval Under Subdivision Control Law Not Required.

Nov. 24 1964
John A. Cosman
Frank E. Hoegler
Paul C. Fay

Planning Board - Town of Walpole

PLAN OF LAND IN WALPOLE, MASS.

SCALE: 1 INCH = 40 FEET
NORWOOD ENGINEERING CO. INC.
CIVIL ENGINEERS
NORWOOD, MASS.

Nov. 18, 1964

I certify that this actual survey was made on the ground in accordance with the Land Court Instructions of 1959 on Nov. 12, 1964.

Date: Nov. 18, 1964

Louis Depina
1420 Providence H'wy Norwood, Mass.

