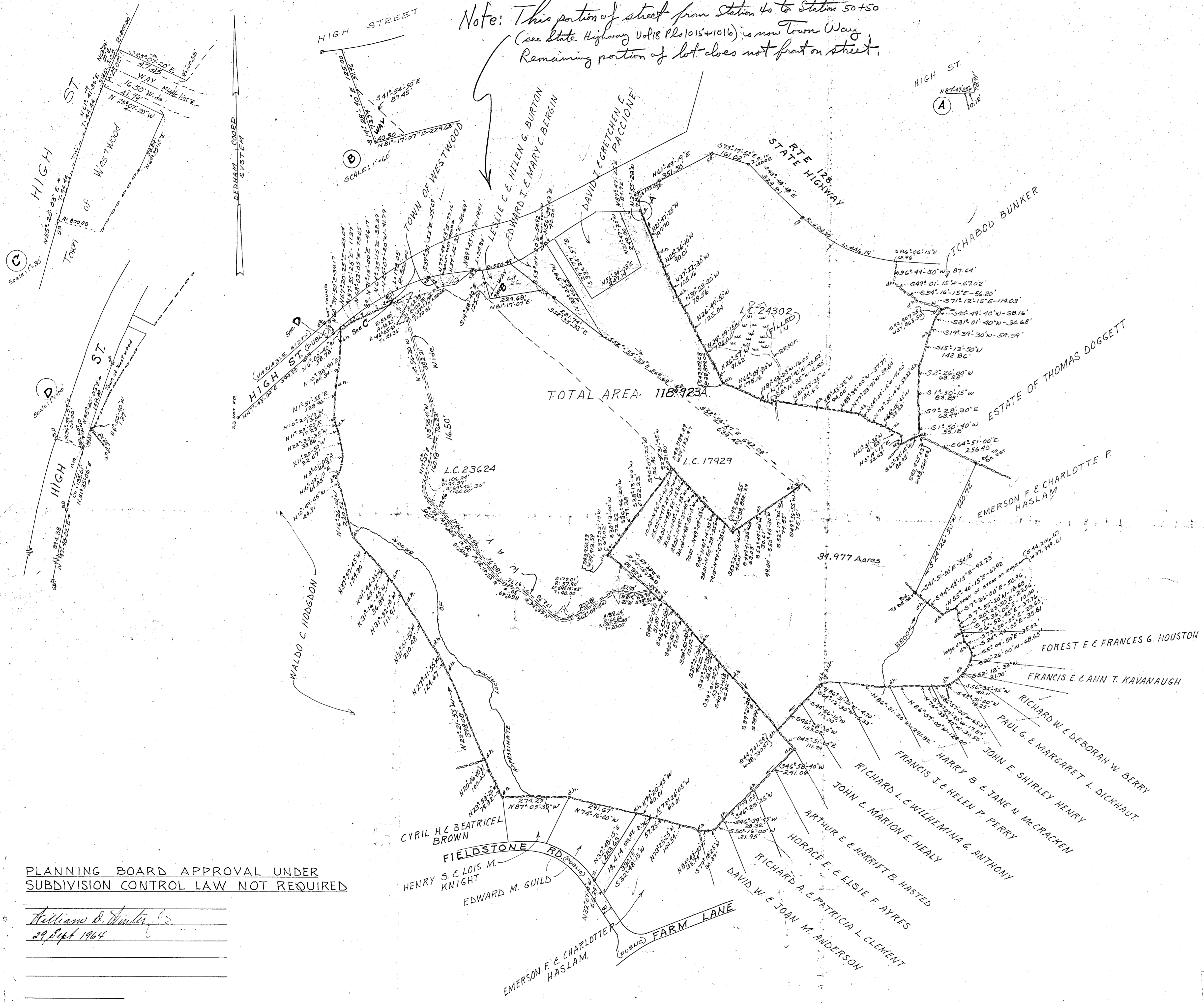


Note: This portion of street from Station 40 to Station 50+50 (see State Highway Vol 18 Pls 1015+1016) is now Town Way. Remaining portion of lot does not front on street.



PLANNING BOARD APPROVAL UNDER SUBDIVISION CONTROL LAW NOT REQUIRED

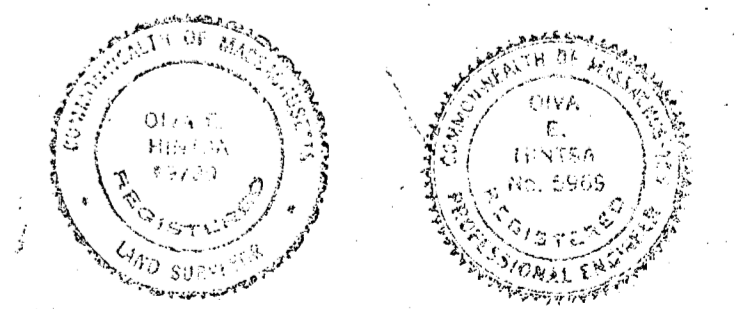
William D. Winter
29 Sept 1964

PLAN OF LAND IN WESTWOOD, MASS.
BELONGING TO
ROCKY ESTATES & REALTY CORP
1161 BOYLSTON ST, NEWTON, MASS.

OIVA E. HINTSA ASSOC'S - CONS. ENGINEERS
49 PELHAM ST., NEWTON CENTRE, MASS.

SCALE: 1" = 200' SEPTEMBER 1, 1964

DEED PLAN
Order _____
Traveler's Plot _____
Area _____
Drawn by _____
Check by _____
Notes _____



33415

11-70-64 WES.

I CERTIFY THAT THIS ACTUAL SURVEY WAS MADE ON THE GROUND IN ACCORDANCE WITH THE LAND COURT INSTRUCTIONS OF 1959 BETWEEN AUGUST 27 AND AUGUST 31.

Oiva E. Hintsa
Sept. 1, 1964