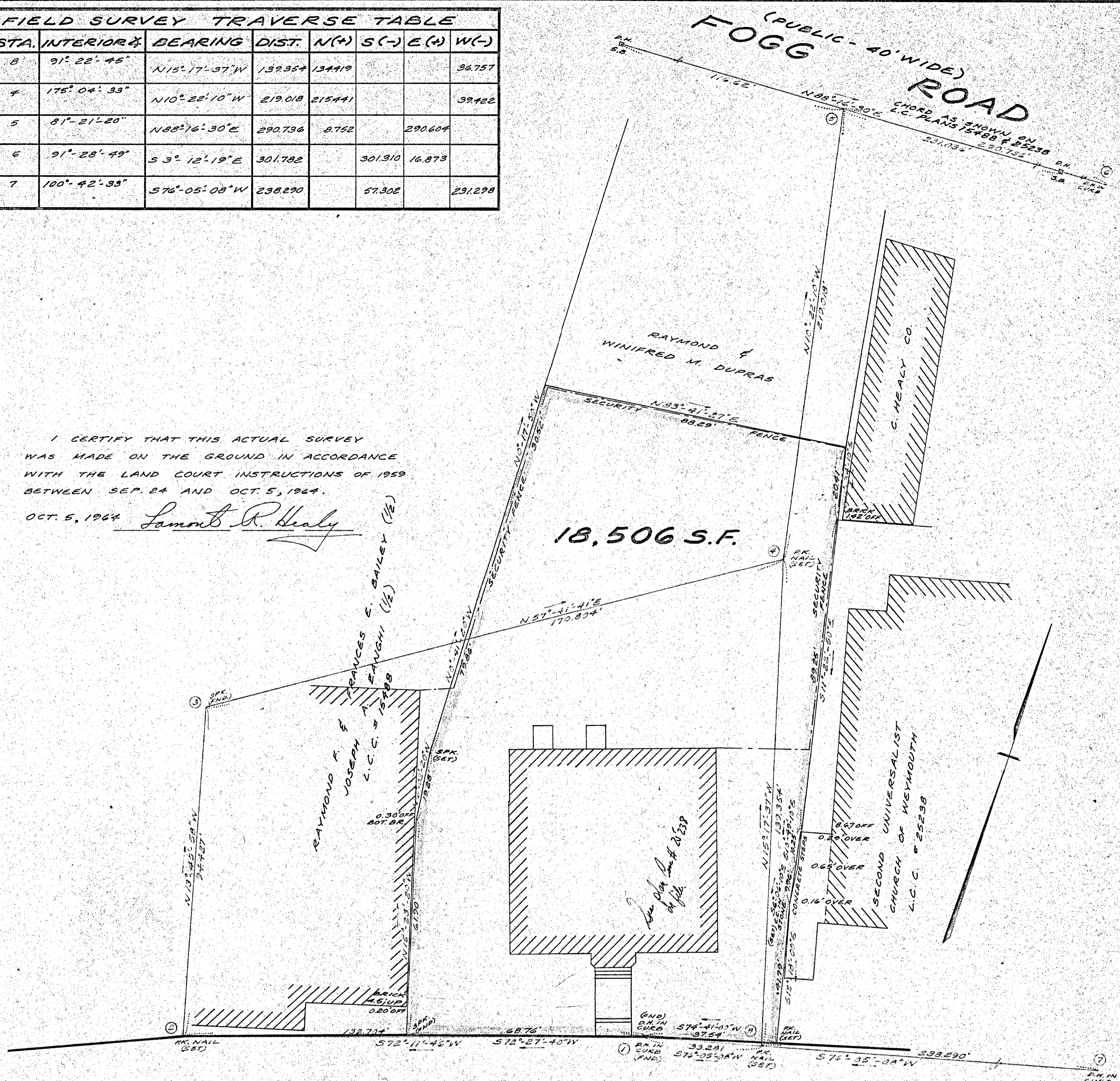


FIELD SURVEY TRAVERSE TABLE							
STA.	INTERIOR	BEARING	DIST.	N(+)	S(-)	E(+)	W(-)
8	91° 22' 45"	N15° 17' 37" W	139.354	134.419			36.757
4	175° 04' 33"	N10° 22' 10" W	219.018	215.441			39.422
5	81° 21' 20"	N88° 16' 30" E	290.736	8.752		290.604	
6	91° 28' 49"	S 3° 12' 19" E	301.782		301.310	16.873	
7	100° 42' 35"	S76° 05' 08" W	238.290		57.302		231.298

I CERTIFY THAT THIS ACTUAL SURVEY WAS MADE ON THE GROUND IN ACCORDANCE WITH THE LAND COURT INSTRUCTIONS OF 1959 BETWEEN SEP. 24 AND OCT. 5, 1964.

OCT. 5, 1964 *Lamont R. Healy*



PLEASANT (PUBLIC) STREET
(VARIABLE WIDTH)

PLAN OF LAND IN WEYMOUTH, MASS.
FOR THE SOUTH WEYMOUTH SAVINGS BANK
SCALE: 1" = 20'
OCT. 5, 1964



TASSELL & HEALY - LAND SURVEYORS
50. WEYMOUTH, MASS.

TOWN OF WEYMOUTH PLANNING BOARD
APPROVAL UNDER THE SUBDIVISION CONTROL LAW NOT REQUIRED.
William F. White
10/5/64 CHAIRMAN