

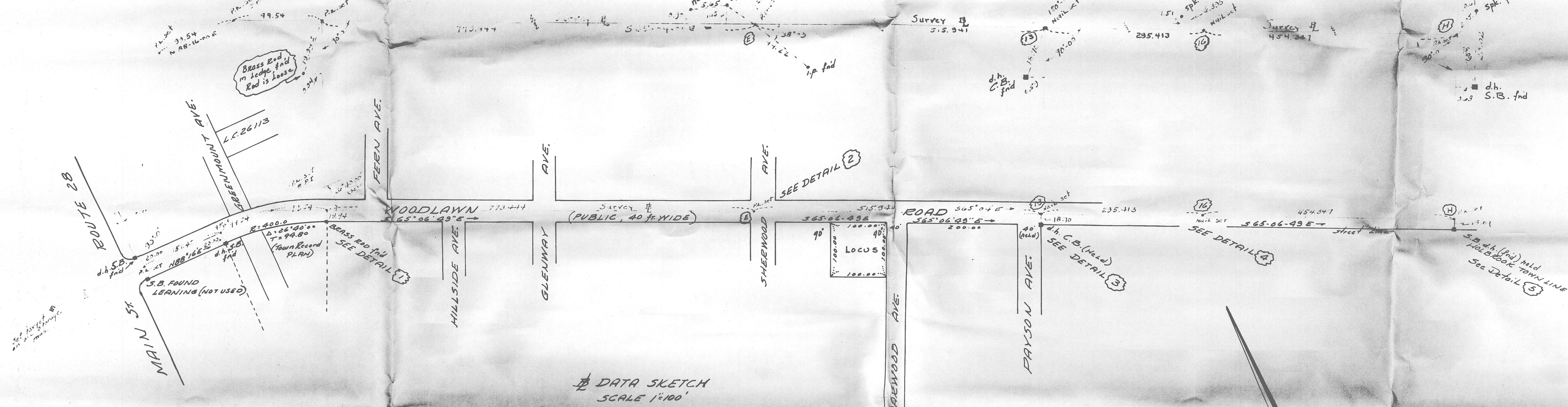
DETAIL 1
NOT TO SCALE

DETAIL 2
NOT TO SCALE

DETAIL 3
NOT TO SCALE

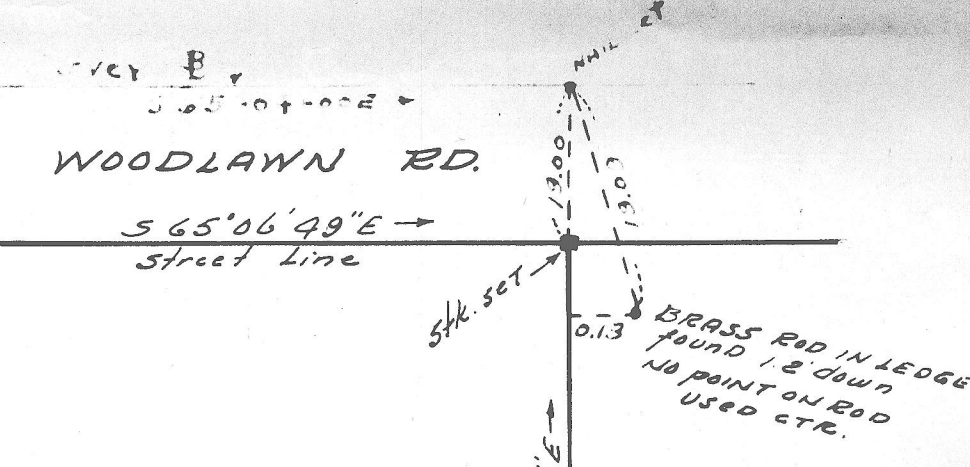
DETAIL 4
NOT TO SCALE

DETAIL 5
NOT TO SCALE

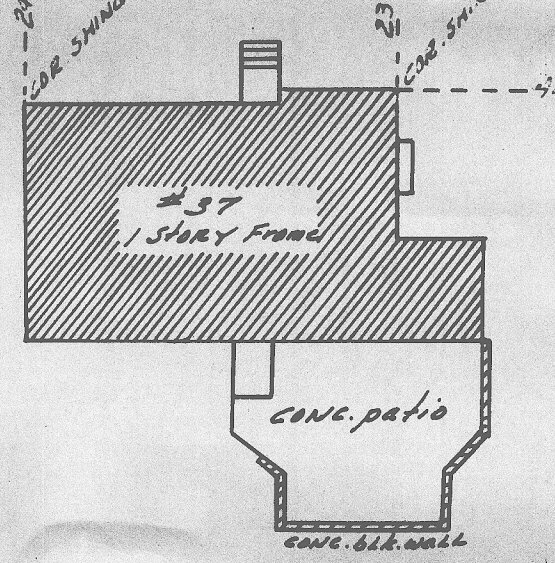


DATA SKETCH
SCALE 1:100

WOODLAWN ROAD
(PUBLIC 40 WIDE)



LOCUS PLAN
SCALE 1:20



ERIC H. FOREMAN
LOT 691

NOTE: Locus consists of Lots 690, 693, 694 & 695 as shown on a plan of RANDOLPH FRONTS, RANDOLPH AND HOLBROOK, MASS., OWNED BY FRANK W. CAUGHLIN, SCALE 1"=100', SEPT. 1911. H.A. MILLHOUSE, ENGR. Plan # 2913, Plan Bt G1

PLAN OF LAND
IN
RANDOLPH, MASS.
SCALE AS NOTED
OCTOBER 10, 1964

RICHARD L. MCGLINCHY
5 OAK HILL ROAD
NABNASETT, MASS.

PLANNING BOARD APPROVAL
NOT REQUIRED UNDER SUB-
DIVISION CONTROL LAW.

I CERTIFY THAT THIS ACTUAL SURVEY
WAS MADE ON THE GROUND BETWEEN SEP.
20, 1964 AND OCTOBER 10, 1964 IN ACCORDANCE
WITH LAND COURT INSTRUCTIONS OF 1958.

Richard L. McGlinchy
15 October, 1964