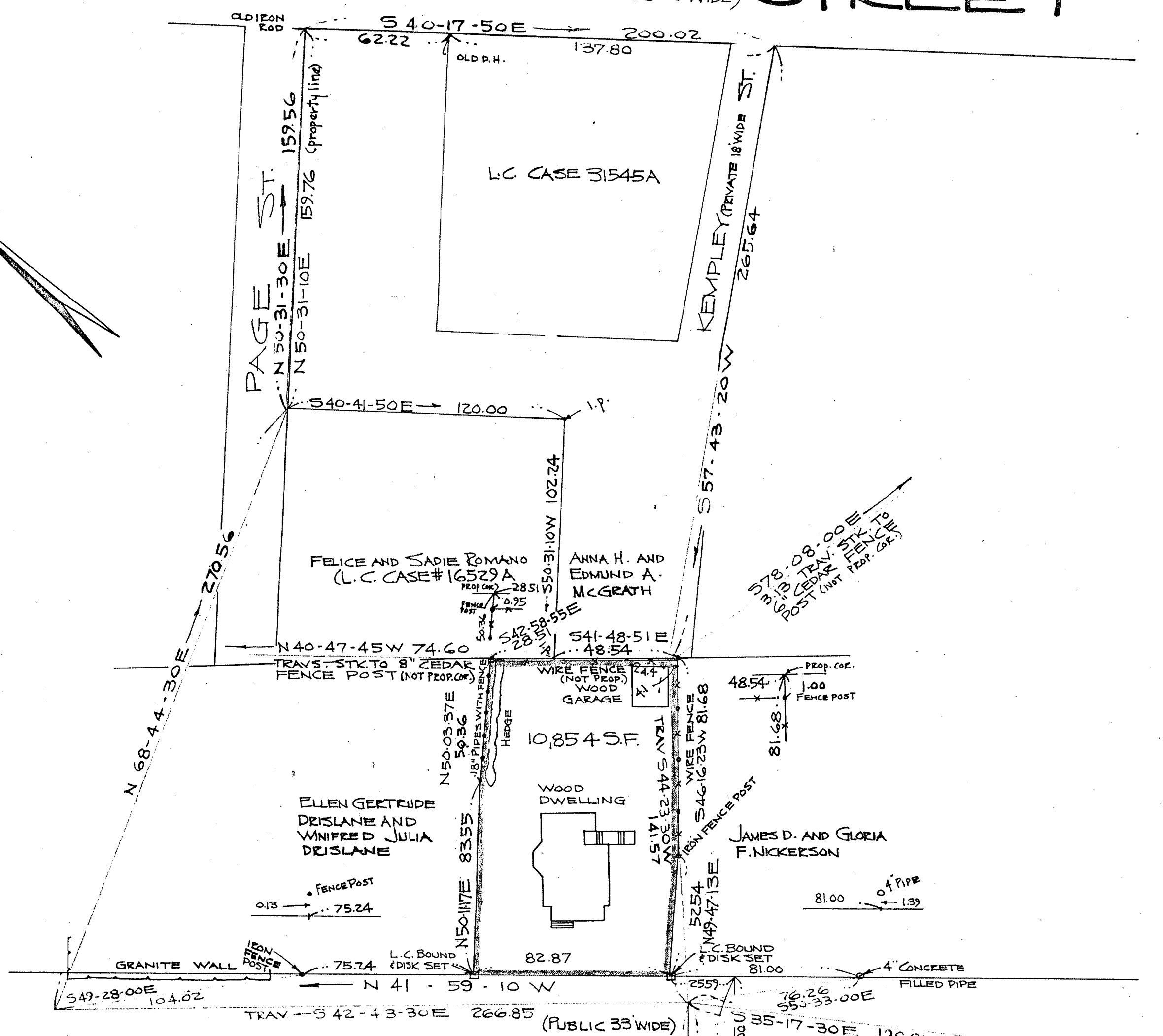
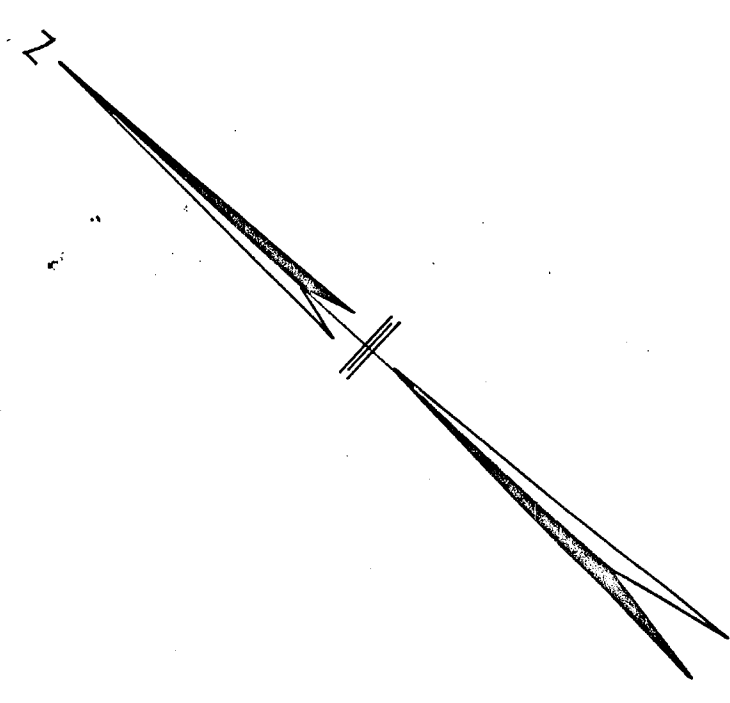


MECHANIC STREET (PUBLIC 33.00 WIDE)



ROCKLAND STREET

I certify that this actual survey was made on the ground in accordance with the Land Court Instructions of 1959 on or between Dec 6, 1963 and Aug 15, 1964
 Aug. 15, 1964 *Louis Spina*
 1420 Providence Highway, Norwood, Mass.

Approval Under Subdivision Control Law Not Required

James J. Gallegos
John J. Conover
William J. ...

Planning Board - Town of Canton

PLAN OF LAND IN CANTON, MASS.

SCALE: - 1 IN. = 40 FT. AUG. 15, 1964
 NORWOOD ENGINEERING CO. INC.
 CIVIL ENGINEERS
 NORWOOD, MASS.

BELCHER STREET

470/100