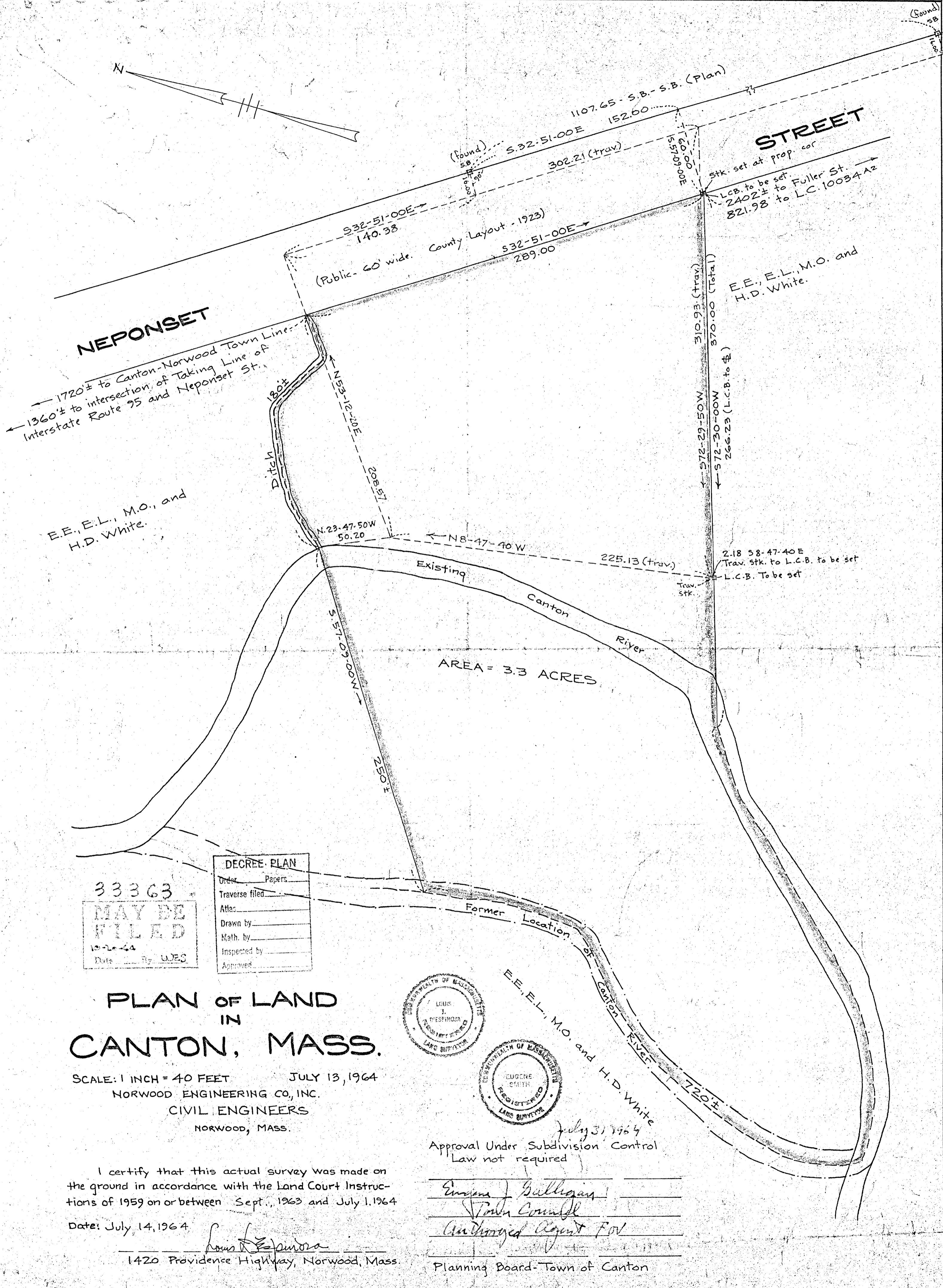
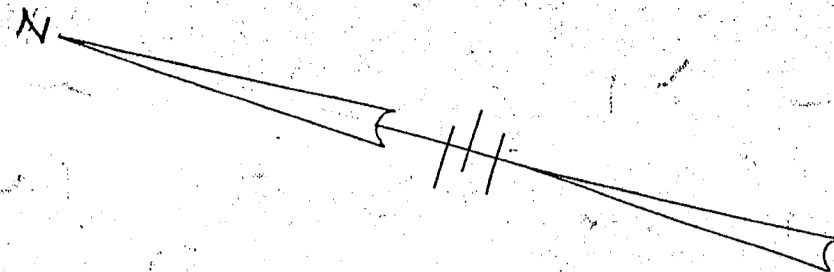


33363A



NEPONSET

STREET

1720± to Canton-Norwood Town Line
1360± to intersection of Taking Line of Interstate Route 95 and Neponset St.

E.E., E.L., M.O., and H.D. White.

E.E., E.L., M.O. and H.D. White.

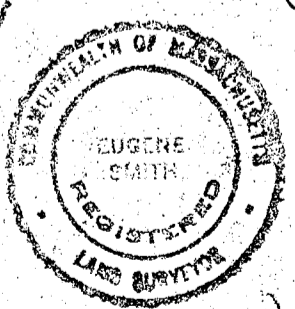
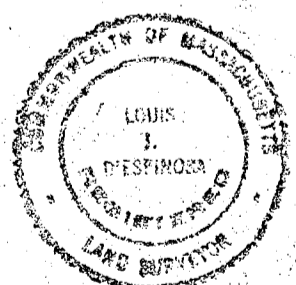
2.18 58-47-40E
Trav. stk. to L.C.B. to be set
L.C.B. to be set

33363
MAY BE FILED
1964
Date By WES

DEGREE PLAN
Order _____ Papers _____
Traverse filed _____
Atlas _____
Drawn by _____
Math. by _____
Inspected by _____
Approved _____

PLAN OF LAND IN CANTON, MASS.

SCALE: 1 INCH = 40 FEET JULY 13, 1964
NORWOOD ENGINEERING CO., INC.
CIVIL ENGINEERS
NORWOOD, MASS.



Approval Under Subdivision Control Law not required

July 31, 1964
Eugene J. Gulligan
Town Council
Anthony Agent For
Planning Board - Town of Canton

I certify that this actual survey was made on the ground in accordance with the Land Court Instructions of 1959 on or between Sept., 1963 and July 1, 1964
Date: July 14, 1964
Louis J. Desjardins
1420 Providence Highway, Norwood, Mass.

33363A