

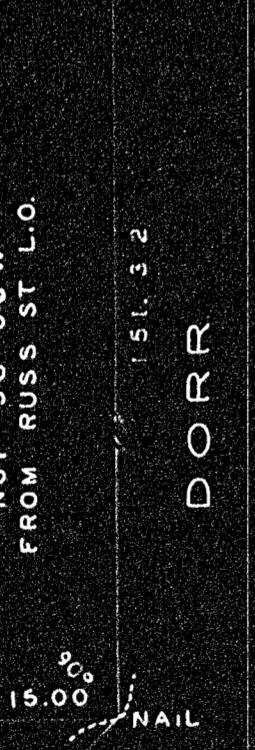
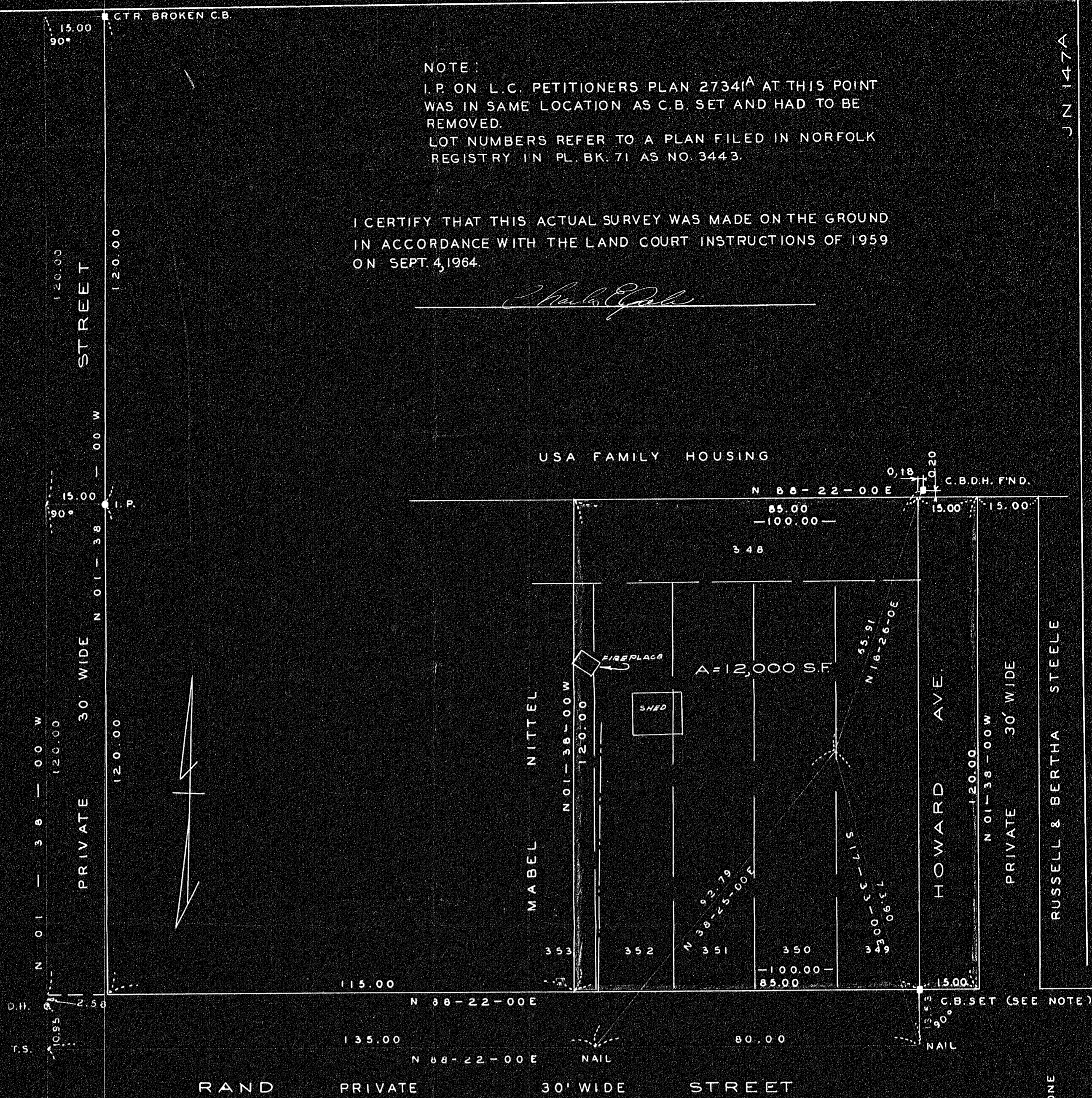
JN 147A

NOTE:  
I.P. ON L.C. PETITIONERS PLAN 27341A AT THIS POINT  
WAS IN SAME LOCATION AS C.B. SET AND HAD TO BE  
REMOVED.  
LOT NUMBERS REFER TO A PLAN FILED IN NORFOLK  
REGISTRY IN PL. BK. 71 AS NO. 3443.

I CERTIFY THAT THIS ACTUAL SURVEY WAS MADE ON THE GROUND  
IN ACCORDANCE WITH THE LAND COURT INSTRUCTIONS OF 1959  
ON SEPT. 4, 1964.

*Charles E. Gale*

USA FAMILY HOUSING



GILBERT V. & ISABELLA JOHNSON

**RECEIVED**  
SEP 14 1964  
PLANNING BOARD  
RANDOLPH

**PLAN OF LAND IN  
RANDOLPH, NORFOLK CO., MASS.**

SCALE: 1" = 40'      SEPT. 9, 1964

GALE ENGINEERING CO., INC.  
BRAintree, MASS.

Approval not required under  
the Sub-Division Control Act  
Randolph Planning Board.

For Recording Purposes Only

*Howard E. Avey Jr. Chairman*  
*George F. Hoey*  
*William J. Farley*  
*James A. Moriarty*  
*Paul J. Mann*

CHARLES E. GALE  
NO. 3741  
REGISTERED  
LAND SURVEYOR  
COMMONWEALTH OF MASSACHUSETTS

DID NOT FIND D.H.  
COVERED WITH CONC.

33360A

10-16-64 R.C.C.  
Date  
Randolph Pl. 430

HOWARD AVE. 30' WIDE  
PRIVATE  
30.00  
90°  
N 01-38-00 W = N 06-51-40 E ON L.C. 27341A  
200.00  
C.B. FND. ON 45' L.C.D. GONE  
100.00  
N.O. GOOD

JN 147A