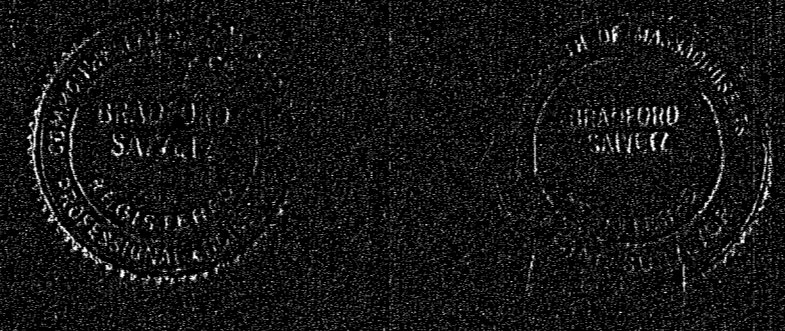


PROPERTY LINE TRAVERSE

READING	DIST	N	S	E	W
120-07-30W	536.00		277.03		104.27
110-05-44W	200.00	68.09		35.59	180.03
52-07-30W	100.00			68.09	35.59
51-05-40E	200.00				104.27
52-07-30W	25.00			28.08	
110-05-44W	225.00	88.06		49.74	35.59
52-07-30W	150.00				39.28
110-05-44W	50.00				34.50
110-05-44W	120.00				12.81
52-07-30W	120.00				42.27
52-07-30W	400.00			150.70	400.57
52-07-30W	410.00			37.44	14.08
110-05-44W	522.00	112.42			30.58
52-07-30W	229.41		214.71		80.81
110-05-44W	150.00		144.54		122.69
110-05-44W	150.00		13.12		2.06
110-05-44W	249.00		209.40		152.13
110-05-44W	510.00		260.49		169.07
110-05-44W	100.00		62.39		84.50
110-05-44W	501.11		437.56		28.36
52-07-30W	404.25		231.32		53.11
52-07-30W	1102.19		515.28		1036.33
	1801.89	1801.34	2436.20	20436.21	

PLAN OF LAND  
BRAintree, MASS.  
SCALE 1" = 80' SEPT 3, 1964

OWNED BY: CAMPANELLI TRUST, MICHAEL CAMPANELLI TRUSTEE.  
BRADFORD SAIVETZ & ASSOCIATES INC.  
CONSULTING CIVIL ENGINEERS  
QUINCY, MASS



33295  
MAILED  
1-17-64  
K. B. 33

APPROVED UNDER THE  
SEAL OF THE BOARD OF  
REGISTERED PROFESSIONAL ENGINEERS  
STATE OF MASSACHUSETTS  
Joseph M. Maguire  
REGISTERED PROFESSIONAL ENGINEER

I certify that this actual survey was made  
on this ground in accordance with the Land Court  
instructions of 1959 on or between August 1962  
and August 1964.  
SEPT 3, 1964  
Joseph M. Maguire