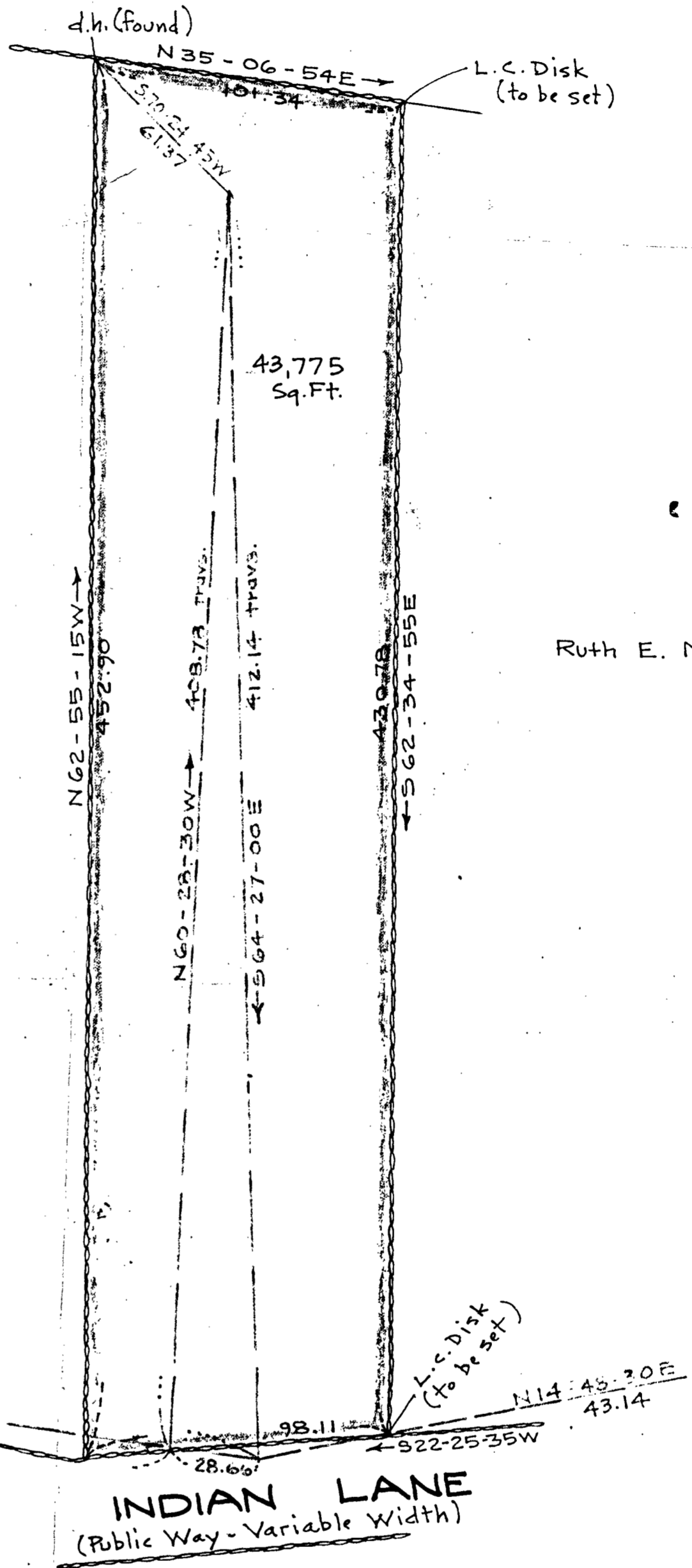
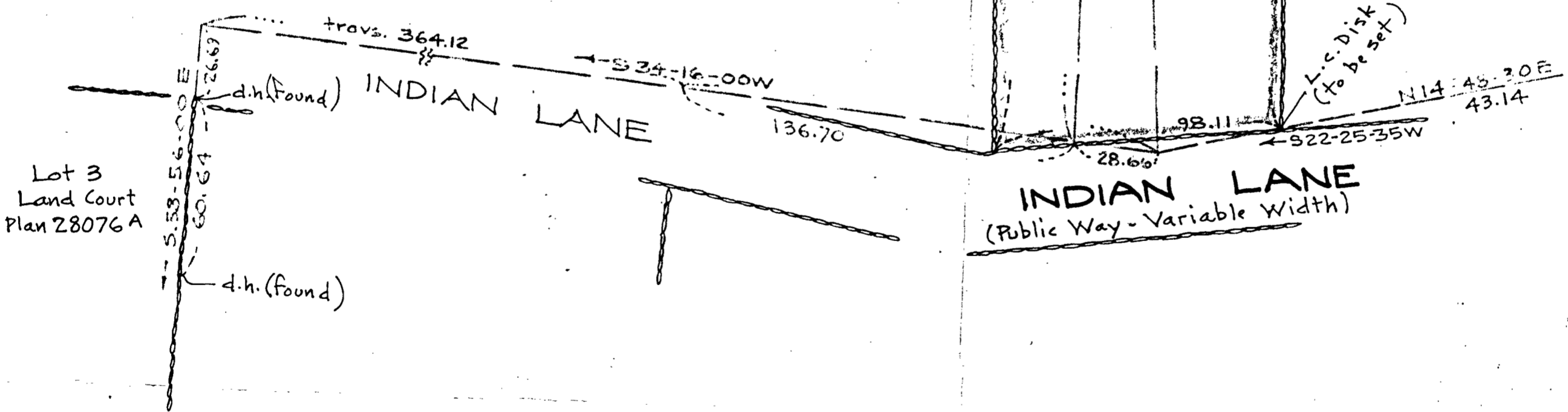


Canton Historical Society



W. Wentworth and Francis J. Perkins

Ruth E. Marrow



Lot 3  
Land Court  
Plan 28076A

# PLAN OF LAND IN CANTON, MASS.

SCALE: 1 INCH = 40 FEET  
MAY 19, 1964  
NORWOOD ENGINEERING CO., INC.  
CIVIL ENGINEERS  
Norwood, Mass.

I certify that this actual survey was made on the ground in accordance with the Land Court instructions of 1959 on or between Feb. 2, 1964 and May 18, 1964  
May 19, 1964 *Louis J. D'Espinoza*

1420 BOSTON-PROVIDENCE HWY, NORWOOD, MASS.

Approval Under Subdivision Control Law Not Required.

DATE APPROVED: \_\_\_\_\_

PLANNING BOARD - TOWN OF CANTON

