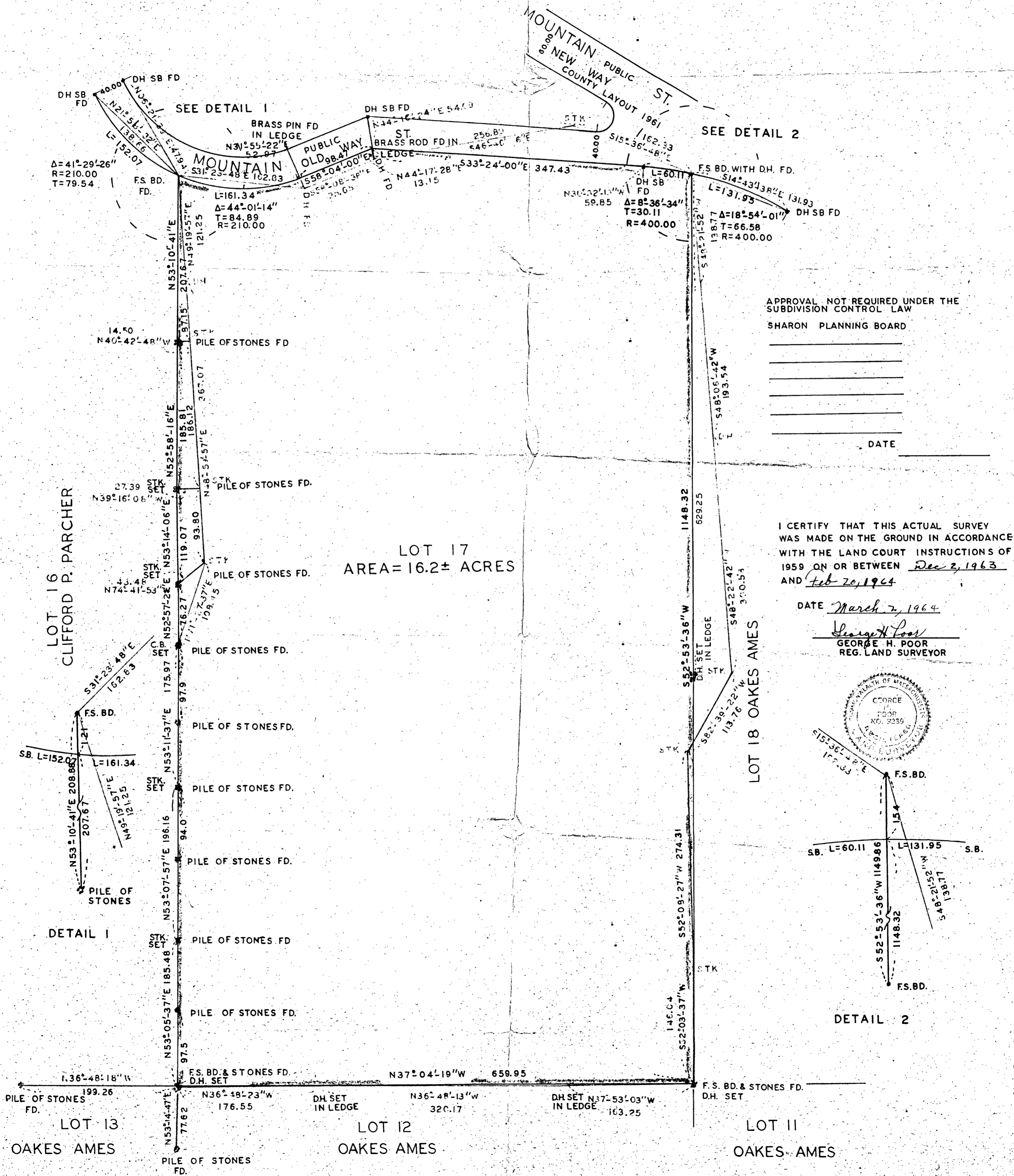
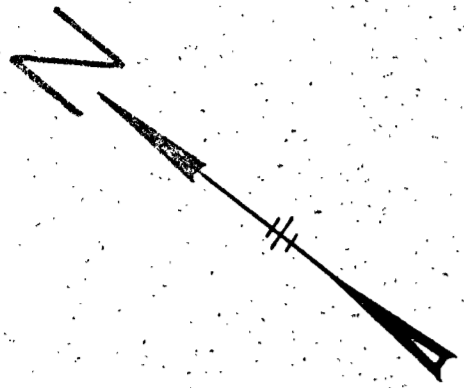


PLAN OF LAND IN SHARON, MASS.

OWNED BY
SIDNEY A. WESTON

SCALE 1"=80' FEB. 25, 1964
 GEORGE H. POOR SURVEYOR
 MANSFIELD, MASS.



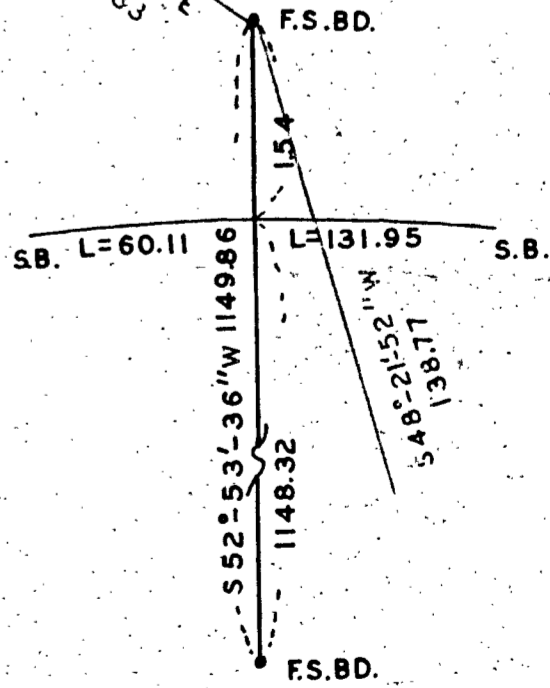
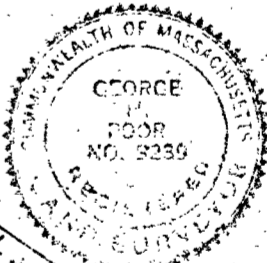
APPROVAL NOT REQUIRED UNDER THE
SUBDIVISION CONTROL LAW
SHARON PLANNING BOARD

DATE _____

I CERTIFY THAT THIS ACTUAL SURVEY
WAS MADE ON THE GROUND IN ACCORDANCE
WITH THE LAND COURT INSTRUCTIONS OF
1959 ON OR BETWEEN Dec 2, 1963
AND Feb 20, 1964

DATE March 2, 1964

George H. Poor
 GEORGE H. POOR
 REG. LAND SURVEYOR



DETAIL 2

DETAIL 1

