

MARIO CALELO ET UX
SANFORD ST. (Private 40 Ft. Wide)

EVANGELICAL BAPTIST CHURCH

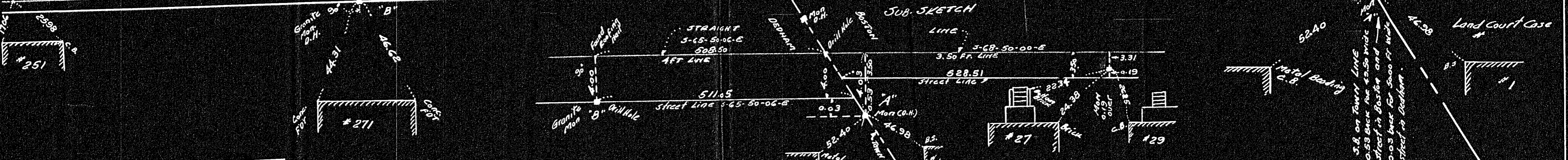
STOUGHTON AVE (Private 40 Ft. Wide) MARION ST. (Private 40 Ft. Wide)



Land Court Case No 28951
CROSS ST (Private 40 Ft. Wide)

ERNEST AVE (Formerly Eliot Ave) (Private 40 Ft. Wide)

MILTON STREET (Public 50 Ft. Wide) WEST MILTON STREET (Public 49.50 Ft. Wide)



APPROVAL UNDER JURISDICTION
CONTROL LAW NOT REQUIRED
R. Howard Hagan
Joseph J. Butler
Charles G. Hous Cop.
11/20/64
DEDHAM PLANNING BOARD

33161
MAY BE FILED
11-20-64
By: [Signature]

I certify that this actual survey was made on the ground in accordance with Land Court instructions of 1959 on June 20 1964.
George E. Bertini Surveyor

PLAN OF LAND IN DEDHAM MASS.
Scale 30 Feet to an Inch.
June 23 1964.
George E. Bertini, Civil Eng. & Surveyor Reg. #2750
28 Belmont Park Everett Mass.

