

- NOTE:
OFFSETS ARE AS FOLLOWS -
- 1. 5.92
 - 2. 5.80
 - 3. 17.19
 - 4. 18.05
 - 5. 12.36
 - 6. 14.29
 - 7. 19.67
 - 8. 19.01
- FROM BOT. OF BOT SHINGLE
- FROM BOT. OF CORNER BOARD

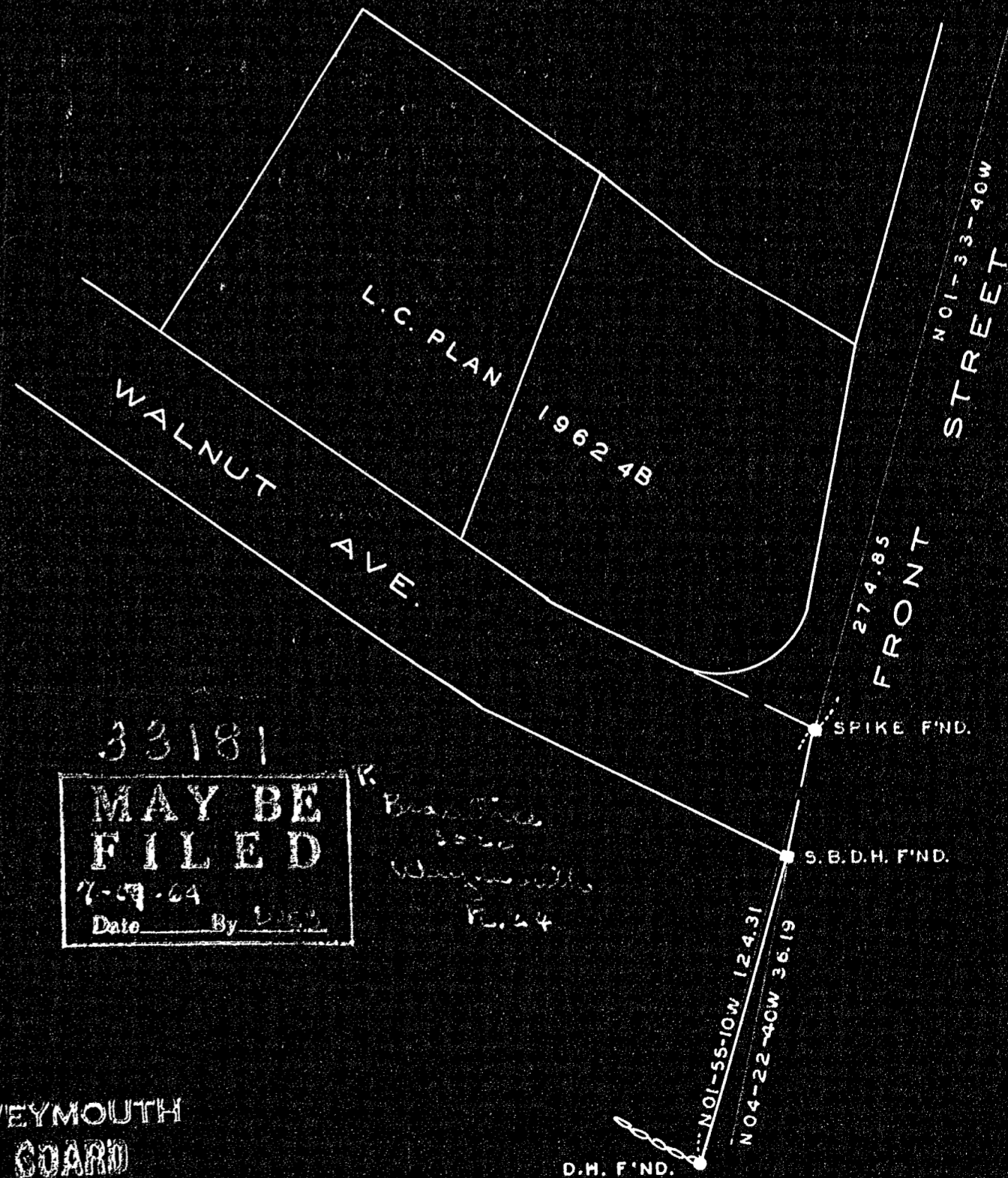
PLAN OF LAND IN
WEYMOUTH & BRAINTREE, NORFOLK CO., MASS.
SCALE: 1" = 40' JUNE 1, 1964

GALE ENGINEERING CO. INC.
BRAINTREE, MASS.



I CERTIFY THAT THIS ACTUAL SURVEY WAS MADE ON THE GROUND IN ACCORDANCE WITH THE LAND COURT INSTRUCTIONS OF 1959 BETWEEN MAY 25 & JUNE 1 1964.

Charles E. Gale



33181
MAY BE FILED
7-27-64
Date By

TOWN OF WEYMOUTH
PLANNING BOARD
APPROVAL UNDER THE SUBDIVISION CONTROL LAW NOT REQUIRED.
6/8/64 *Ralph Laven*
CHAIRMAN-SECRETARY
VICE

APPROVAL UNDER THE SUBDIVISION CONTROL LAW NOT REQUIRED. June 1, 1964
Joseph M. Maggedi
AUTHORIZED SIGNATURE FOR
PLANNING BOARD - TOWN OF BRAINTREE