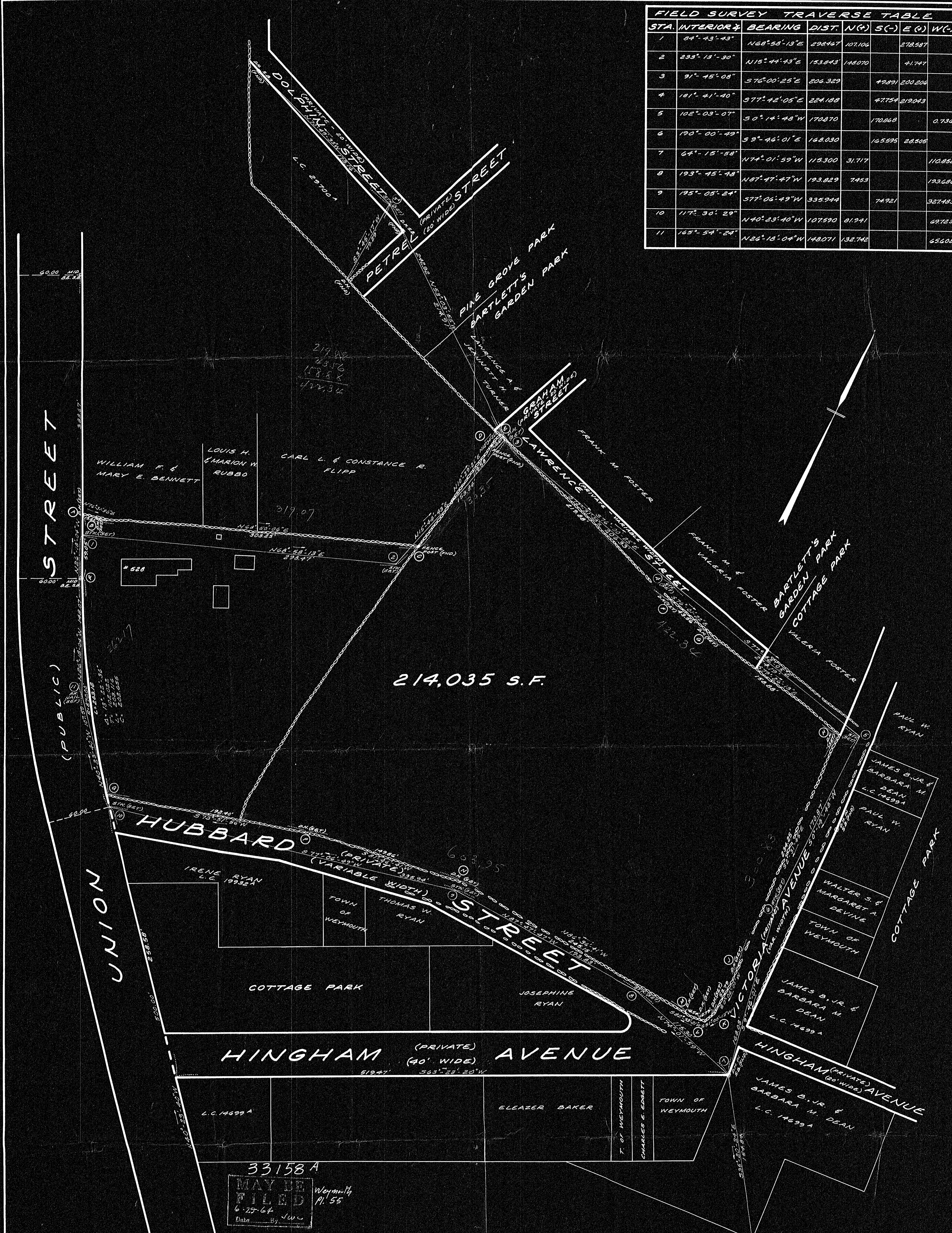


FIELD SURVEY TRAVERSE TABLE							
STA.	INTERIOR ANGLE	BEARING	DIST.	N (+)	S (-)	E (+)	W (-)
1	84°-43'-43"	N68°-58'-13"E	290.467	107.106		278.587	
2	293°-13'-30"	N15°-44'-43"E	153.843	148.070		41.747	
3	91°-45'-08"	S76°-00'-25"E	206.329		49.891	200.206	
4	181°-41'-40"	S77°-42'-05"E	224.188		47.754	219.043	
5	102°-03'-07"	S0°-14'-48"W	170.870		170.868	0.736	
6	190°-00'-49"	S9°-46'-01"E	168.030		165.895	28.505	
7	64°-15'-58"	N74°-01'-59"W	115.300	31.717			110.852
8	195°-45'-48"	N87°-47'-47"W	193.829	74.953			139.686
9	195°-05'-24"	S77°-06'-49"W	335.944		74.921	327.483	
10	117°-30'-29"	N40°-23'-40"W	107.590	81.241			69.723
11	165°-54'-24"	N26°-18'-04"W	148.071	132.742			65.608



33158 A  
MAY BE FILED  
6-29-64  
Date By JWC

PLAN OF LAND IN WEYMOUTH, MASS.  
FOR WASHBURN REALTY TRUST  
SCALE: 1"=40'  
MAR. 31, 1964



TASSELL & HEALY - LAND SURVEYORS  
50. WEYMOUTH, MASS.

I CERTIFY THAT THIS ACTUAL SURVEY WAS MADE ON THE GROUND IN ACCORDANCE WITH THE LAND COURT INSTRUCTIONS OF 1959 BETWEEN MAR. 25, 1964 AND MAR. 31, 1964.  
MARCH 31, 1964

Lamont R. Healy

TOWN OF WEYMOUTH PLANNING BOARD  
APPROVAL UNDER THE SUBDIVISION CONTROL LAW NOT REQUIRED.  
4, 13 et al. Chairman Secretary