

PLAN OF LAND IN
HOLBROOK, NORFOLK COUNTY, MASS.

SCALE: 1"=20'

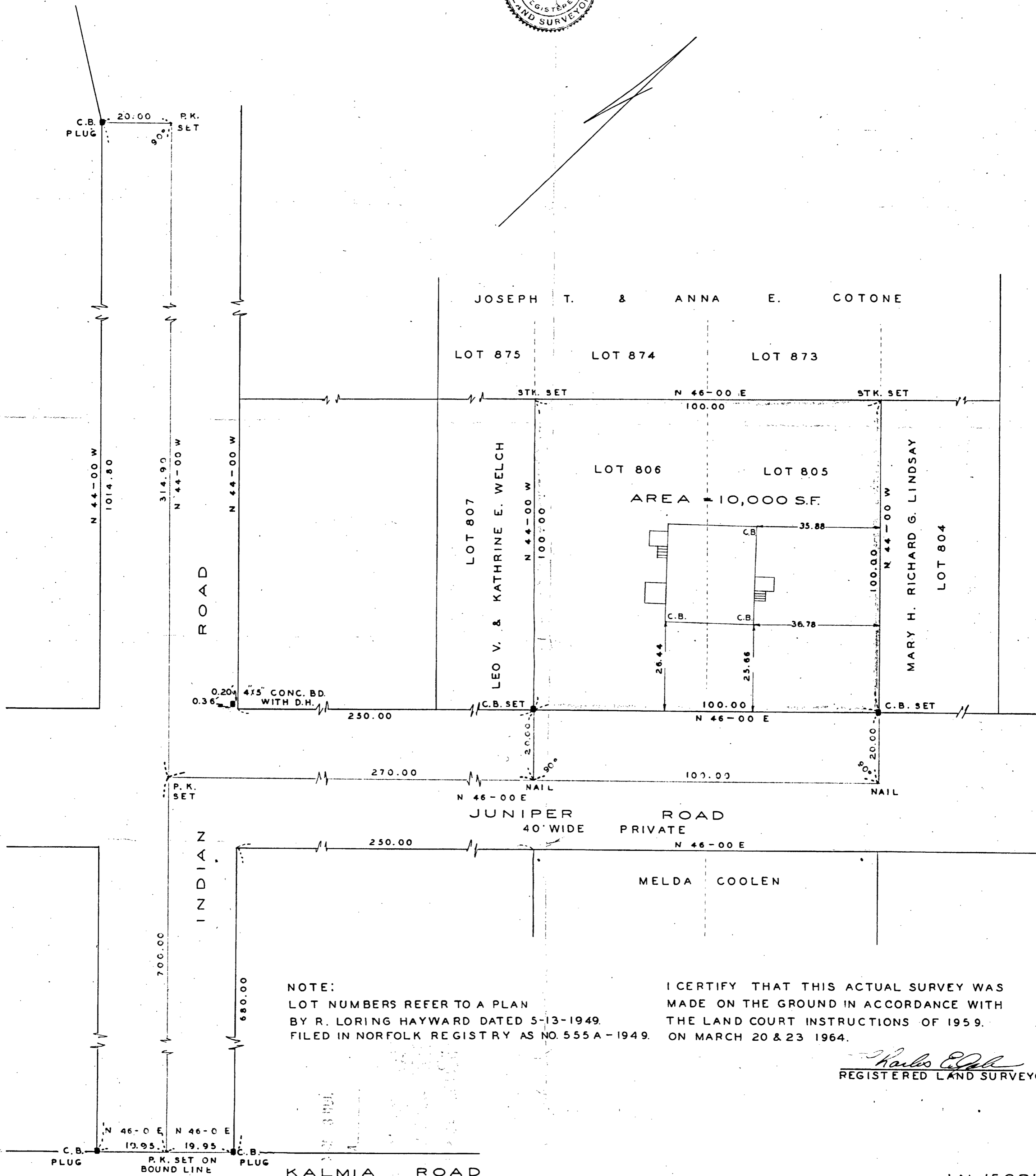
MAR. 26, 1964

GALE ENGINEERING COMPANY INC.

BRAINTREE, MASS.



J.N. 15621 W.G.H.



NOTE:
LOT NUMBERS REFER TO A PLAN
BY R. LORING HAYWARD DATED 5-13-1949.
FILED IN NORFOLK REGISTRY AS NO 555 A - 1949.

I CERTIFY THAT THIS ACTUAL SURVEY WAS
MADE ON THE GROUND IN ACCORDANCE WITH
THE LAND COURT INSTRUCTIONS OF 1959.
ON MARCH 20 & 23 1964.

Charles E. Gale
REGISTERED LAND SURVEYOR

J.N. 15621 W.G.H.