

PLAN OF LAND
IN
FRANKLIN MASS.

SCALE 1 IN = 80 FT

EVERETT M. BROOKS CO.

NEWTONVILLE, WAYLAND & W. ACTON

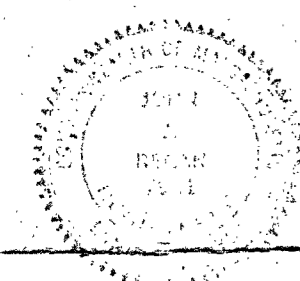
JAN. 31, 1964

CIVIL ENGRS

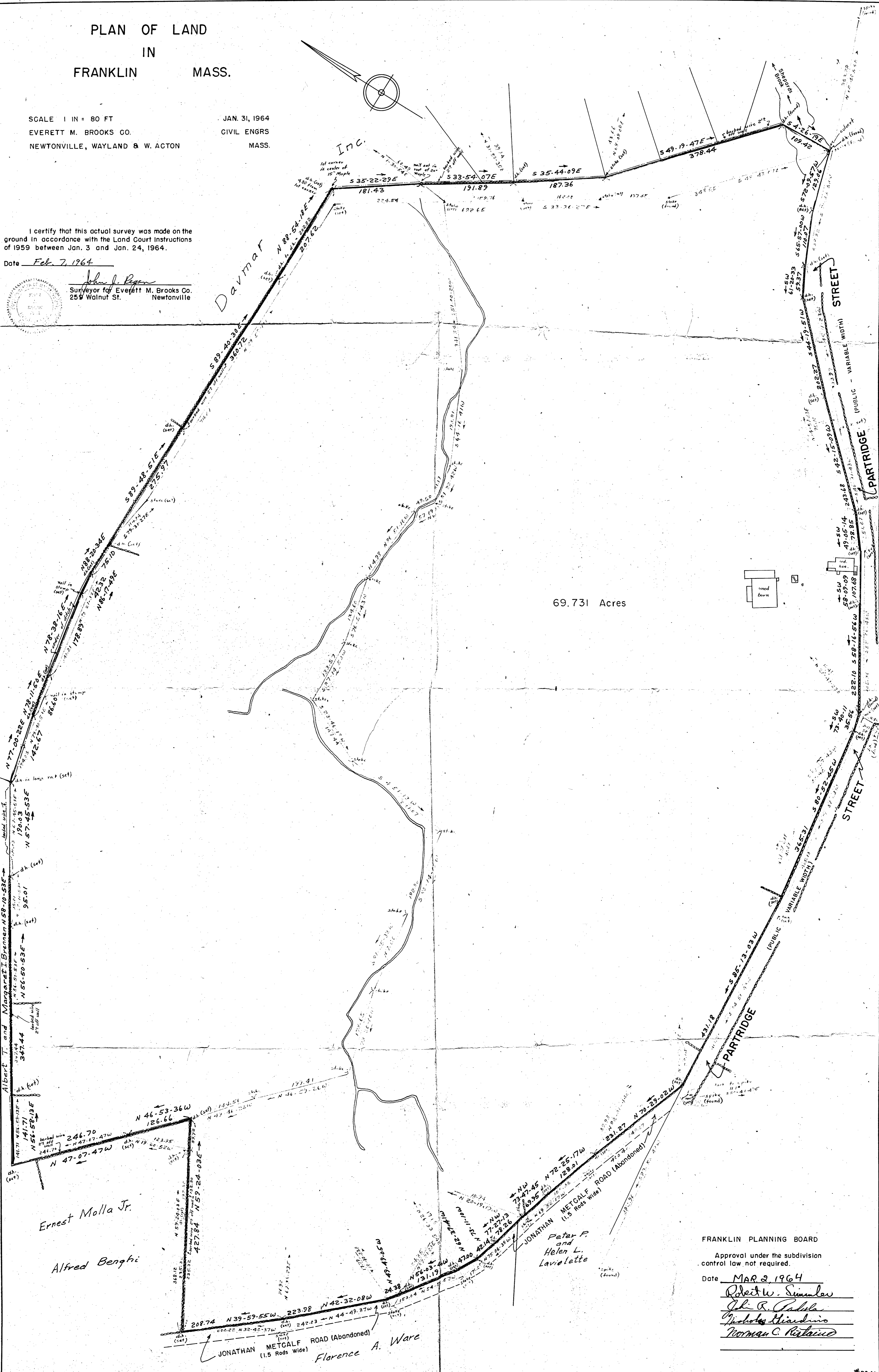
MASS.

I certify that this actual survey was made on the ground in accordance with the Land Court Instructions of 1959 between Jan. 3 and Jan. 24, 1964.

Date Feb. 7, 1964



John J. Ryan
Surveyor for Everett M. Brooks Co.
259 Walnut St. Newtonville



Ernest Molla Jr.
Alfred Benghi

JONATHAN METCALF ROAD (Abandoned)
(1.5 Rods Wide)
Florence A. Ware

Peter P. and Helen L. Lavolette

FRANKLIN PLANNING BOARD

Approval under the subdivision control law not required.

Date MAR 2 1964
Robert W. Sumner
John R. Pabla
Nicholas Giardino
Norman C. Restaino