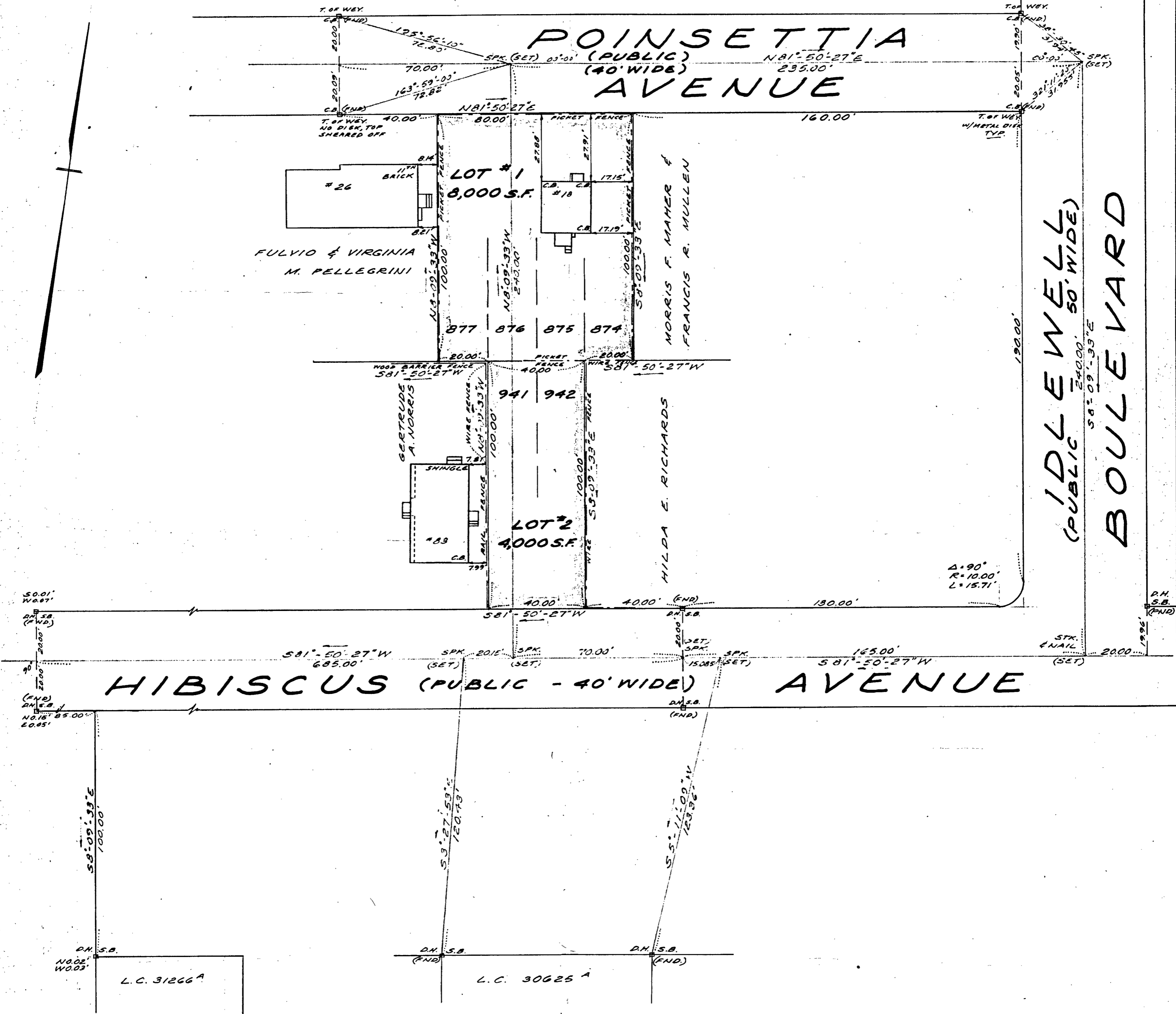


NOTE: POINSETTIA AVENUE BOUND LOCATIONS SHOWN WITH FIELD ANGLES FOR EASE OF CALCULATION.



I CERTIFY THAT THIS ACTUAL SURVEY WAS MADE ON THE GROUND IN ACCORDANCE WITH THE LAND COURT INSTRUCTIONS OF 1959 BETWEEN APR. 13, AND APR. 14, 1964.

APRIL 21, 1964
Laminth R. Healy

PLAN OF LAND IN WEYMOUTH, MASS.
 FOR
 ALLAN J. BOYD
 SCALE: 1"=30'
 APRIL 20, 1964

TOWN OF WEYMOUTH
 PLANNING BOARD
 APPROVAL UNDER THE SUBDIVISION CONTROL LAW NOT REQUIRED.
William F. Feltus
 5/4/64 CHAIRMAN



TASSELL & HEALY - LAND SURVEYORS
 50, WEYMOUTH, MASS.