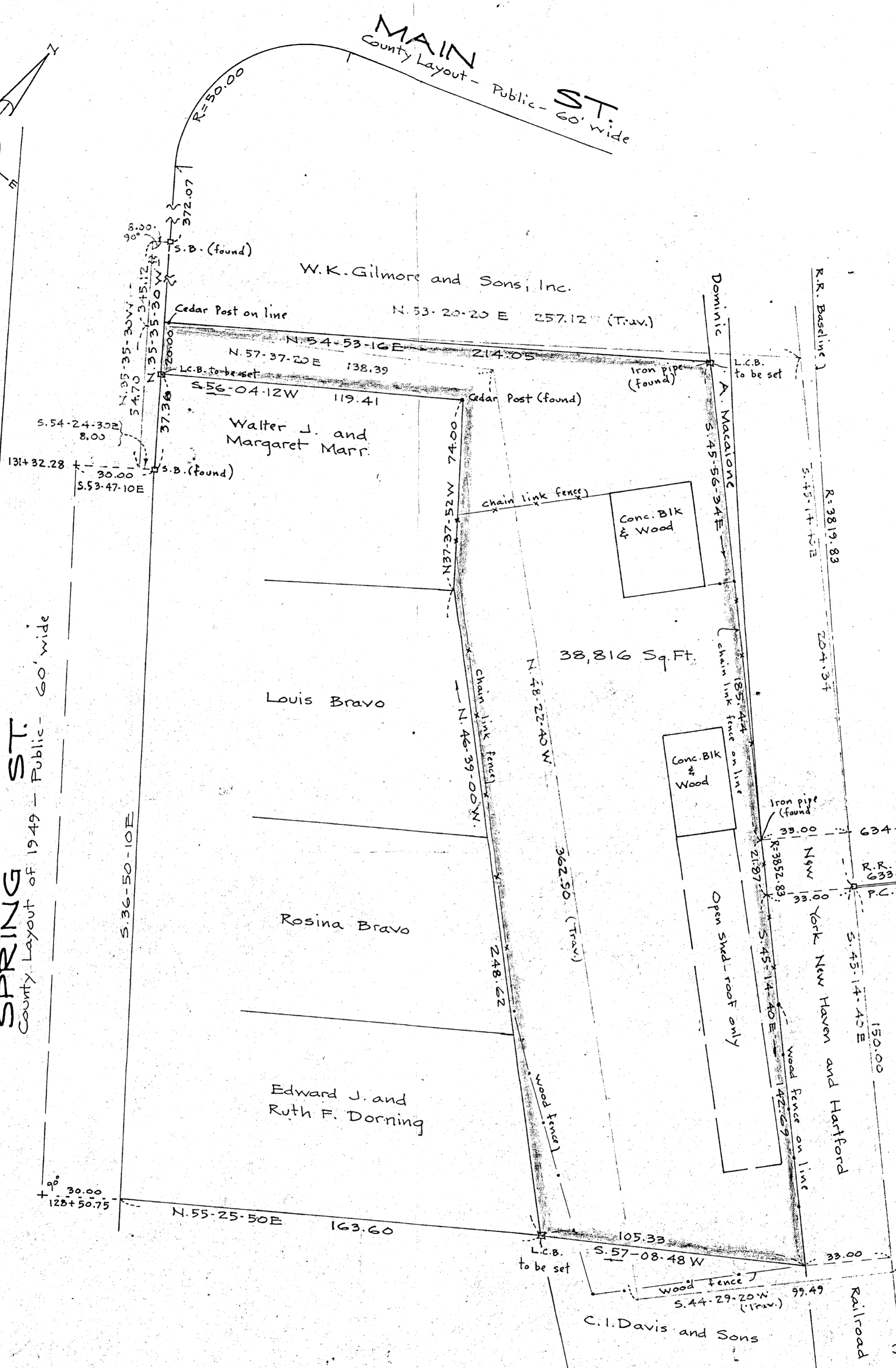


MAIN ST
County Layout - Public - 60' wide

SPRING ST.
County Layout of 1949 - Public - 60' wide



Approval Under Subdivision Control
Law not required.

Charles D. Carr

March 17, 1964
Planning Board - Town of Medfield

PLAN OF LAND IN MEDFIELD, MASS.

SCALE: 1" = 30 FT. FEB. 13, 1964

NORWOOD ENGINEERING CO INC.
CIVIL ENGINEERS
NORWOOD, MASS.



I certify that this actual survey was made on the ground in accordance with the Land Court Instructions of 1959 on or between Jan. 20, 1964 and Jan. 31, 1964.

Feb. 13, 1964
Louis Despinosa
1420 Providence Highway
Norwood, Mass.

R.R. Baseline Mon. 615 + 00.13

9/10
1/15