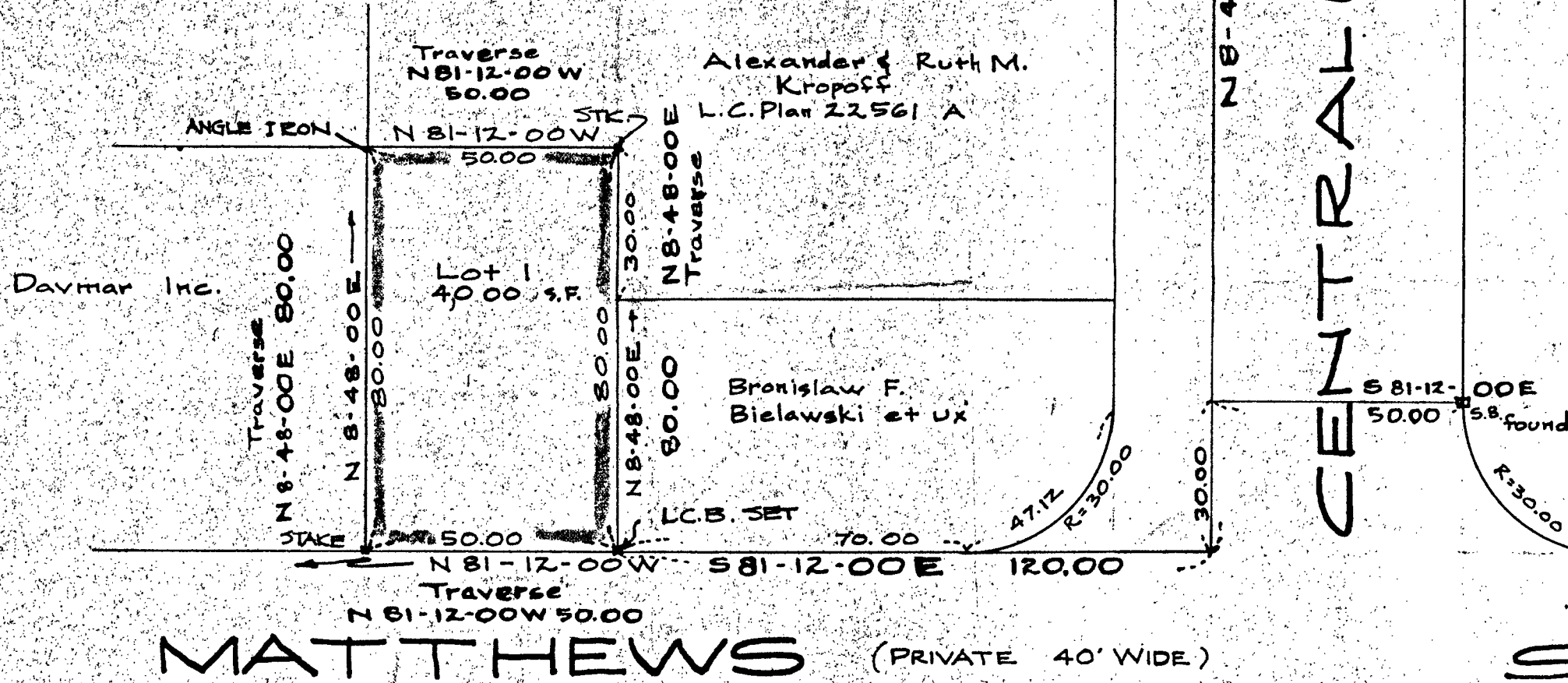


WENTWORTH STREET

HOLMES ST.

CENTRAL (PUBLIC) AVE.



MATTHEWS (PRIVATE 40' WIDE) STREET

Town of Dedham

Approval under subdivision control
law not required.

Charles B. ... FEB 25, 1964

Joseph J. Ballio
Richard ...

Planning Board - Town of Dedham

PLAN OF LAND IN DEDHAM, MASS.

SCALE: 1 INCH = 30 FEET JULY 16, 1963
NORWOOD ENGINEERING CO. INC.
CIVIL ENGINEERS
NORWOOD, MASS.

I certify that this actual survey was
made on the ground in accordance with
the Land Court Instructions of 1959 on or
between July 8, 1963 and July 15, 1963

Date: JULY 16, 1963 *Louis J. D'Espinoza*
1420 Boston Prov Pike Norwood Mass.

