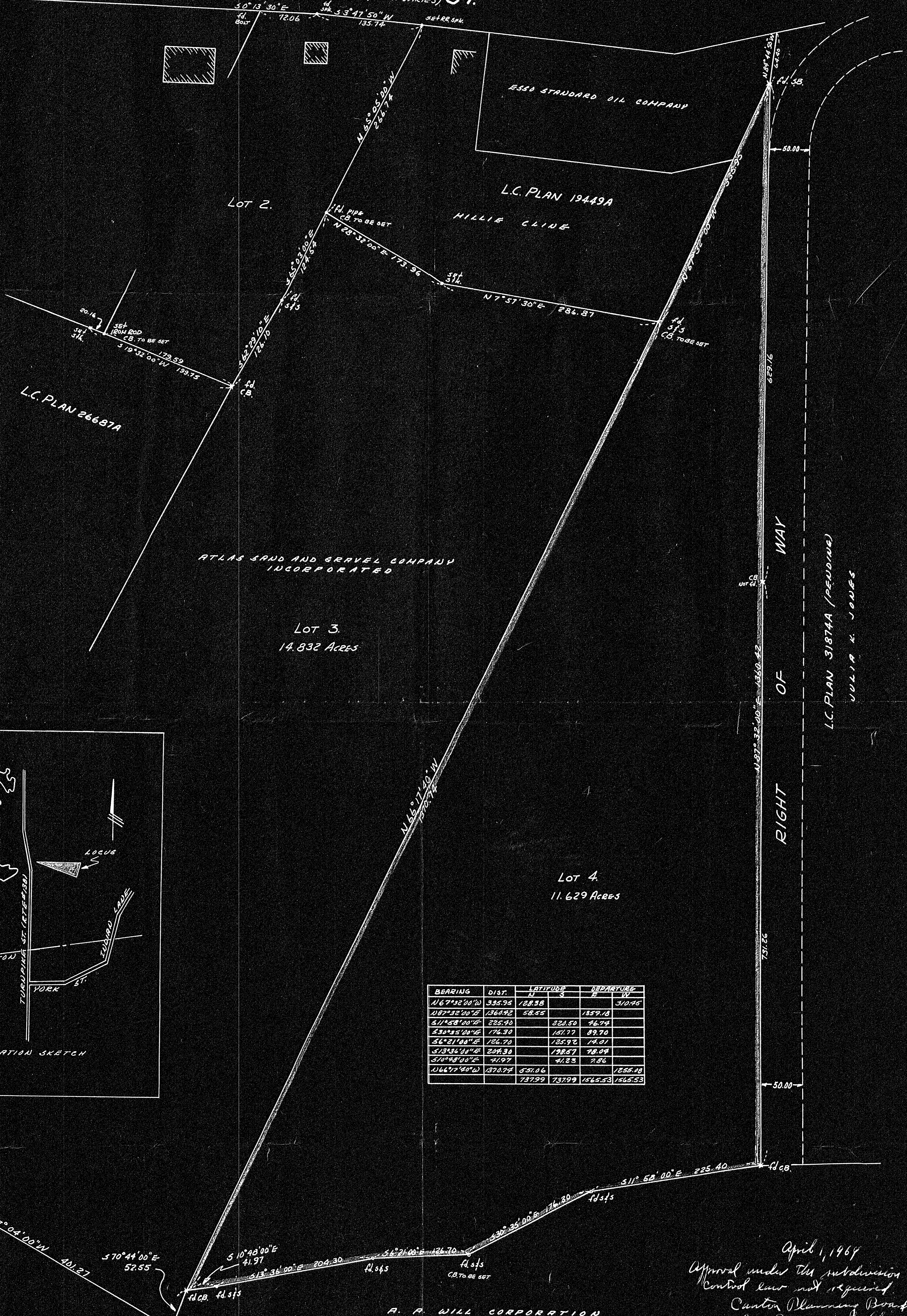


TURNPIKE (PUBLIC WIDTH VARIES) ST.



ESSO STANDARD OIL COMPANY

L.C. PLAN 19449A

HILLIE CLINE

L.C. PLAN 26687A

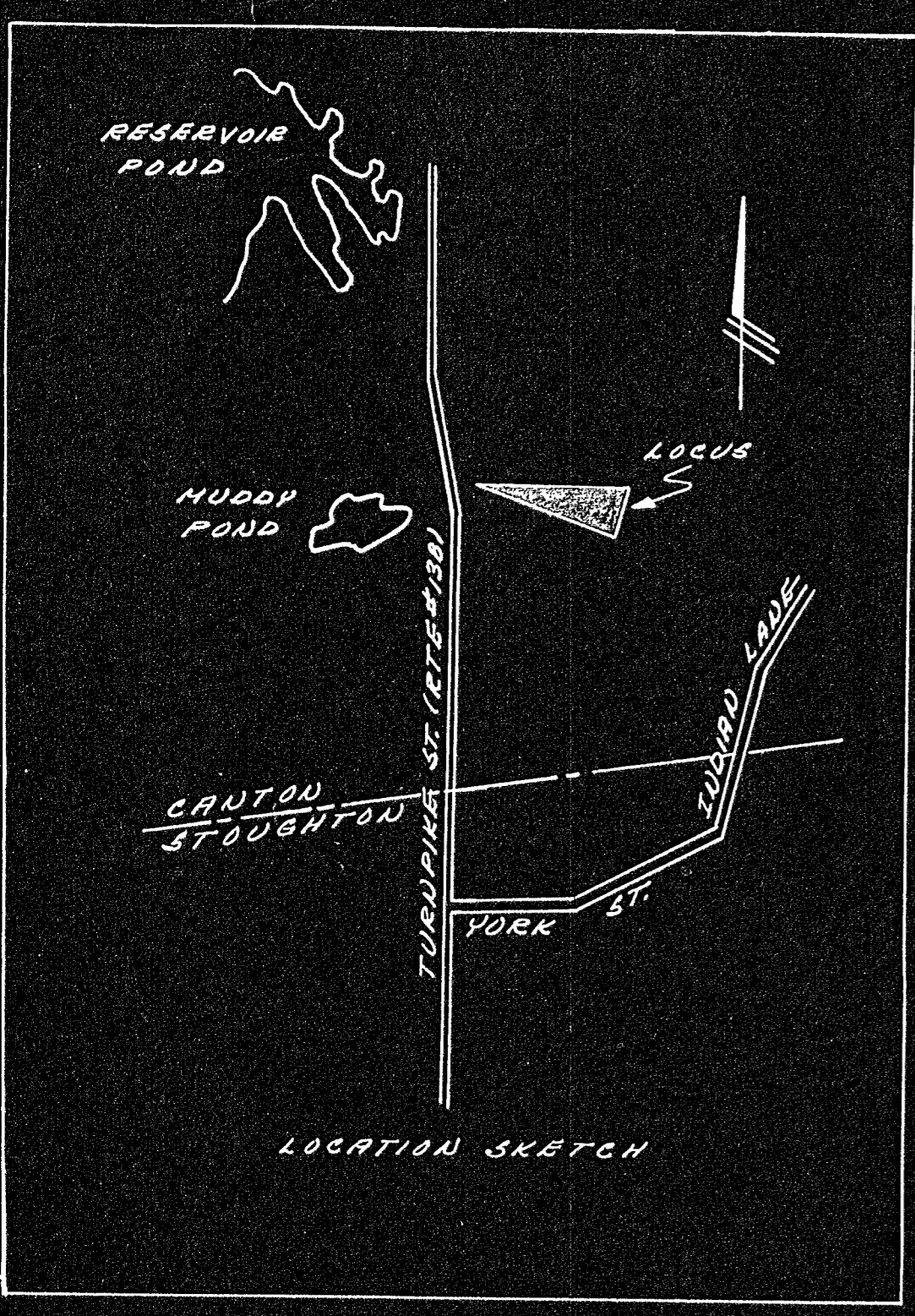
ATLAS SAND AND GRAVEL COMPANY INCORPORATED

LOT 3
14.832 ACRES

LOT 4
11.629 ACRES

WAY OF RIGHT

L.C. PLAN 31874A (PENDING)
JULIA K. JONES

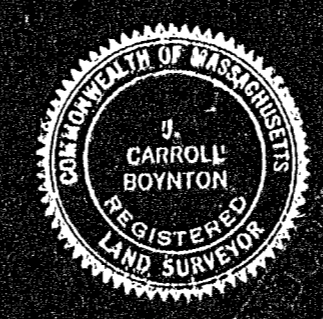


BEARING	DIST.	LATITUDE		DEPARTURE	
		N	S	E	W
N 67° 32' 00" W	335.95	128.38			310.95
N 87° 32' 00" E	136.92	58.55		135.91	
S 11° 58' 00" E	225.90		224.50	46.74	
S 32° 05' 00" E	176.30		151.77	89.70	
S 62° 11' 00" E	126.70		125.92	54.01	
S 73° 31' 00" E	204.30		198.57	78.09	
S 70° 48' 00" E	41.97		41.25	28.6	
N 66° 17' 40" W	1370.74	531.06			1255.78
	73799	73799	1565.53	1565.53	

April 1, 1964
Approval under this subdivision
control law not required
Canton Planning Board
By Eugene J. Sullivan
Tobin Council
Unauthorized sign

32996
MAY BE FILED
4-3-64 By R.C.C.

I CERTIFY THAT THIS ACTUAL SURVEY WAS MADE ON THE GROUND IN ACCORDANCE WITH LAND COURT INSTRUCTIONS OF 1959 BETWEEN JANUARY 20 AND FEBRUARY 3, 1964



LAND COURT
PLAN OF LAND IN CANTON
OWNED BY
ATLAS SAND AND GRAVEL CO. INC.
SCALE: 1" = 60'
HAYWARD-BOYNTON & BOYNTON ENGINEERS
68 MAIN STREET
FEBRUARY 19, 1964
BROCKTON

FEBRUARY 19, 1964 J. F. Boynton REGISTERED PROFESSIONAL ENGINEER AND SURVEYOR