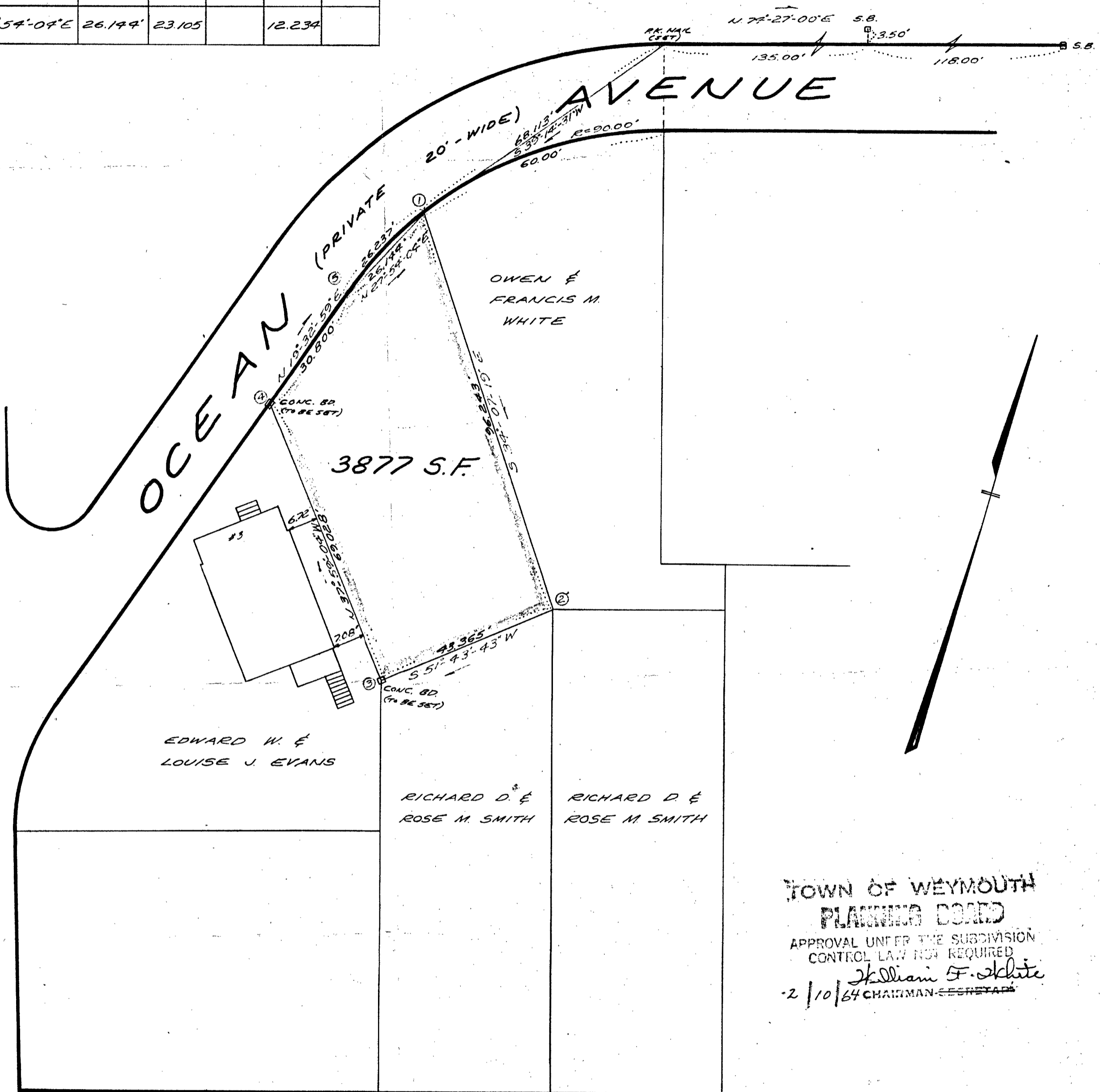


FIELD & PROPERTY TRAVERSE TABLE							
STA.	INTERIOR \angle	BEARING	DIST.	N(+)	S(-)	E(+)	W(-)
1	62°-01'-23"	S 34°-07'-19" E	96.243		79.674	53.988	
2	94°-08'-58"	S 51°-43'-43" W	43.365		26.860		34.045
3	89°-42'-47"	N 37°-59'-04" W	69.028	54.406			42.483
4	122°-27'-57"	N 19°-32'-59" E	30.800	29.024		10.306	
5	171°-38'-55"	N 27°-54'-04" E	26.144	23.105		12.234	

SEA (PUBLIC 53'-WIDE) STREET



TOWN OF WEYMOUTH
 PLANNING BOARD
 APPROVAL UNDER THE SUBDIVISION
 CONTROL LAW NOT REQUIRED
 William F. White
 2/10/64 CHAIRMAN SECRETARY

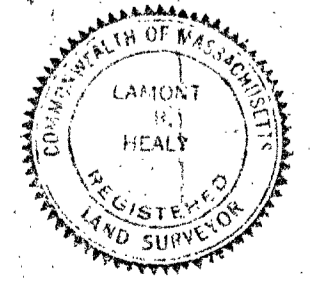
I CERTIFY THAT THIS ACTUAL SURVEY
 WAS MADE ON THE GROUND IN
 ACCORDANCE WITH THE LAND COURT
 INSTRUCTIONS OF 1959 BETWEEN
 JAN. 29 AND JAN. 30, 1964

JANUARY 31, 1964
 Lamont R. Healy

PLAN OF LAND IN
 WEYMOUTH, MASS.
 FOR

RAY BUILDING ASSOCIATES, INC.

SCALE: 1"=20' JAN. 27, 1964



TASSELL & HEALY - LAND SURVEYORS
 50. WEYMOUTH, MASS.