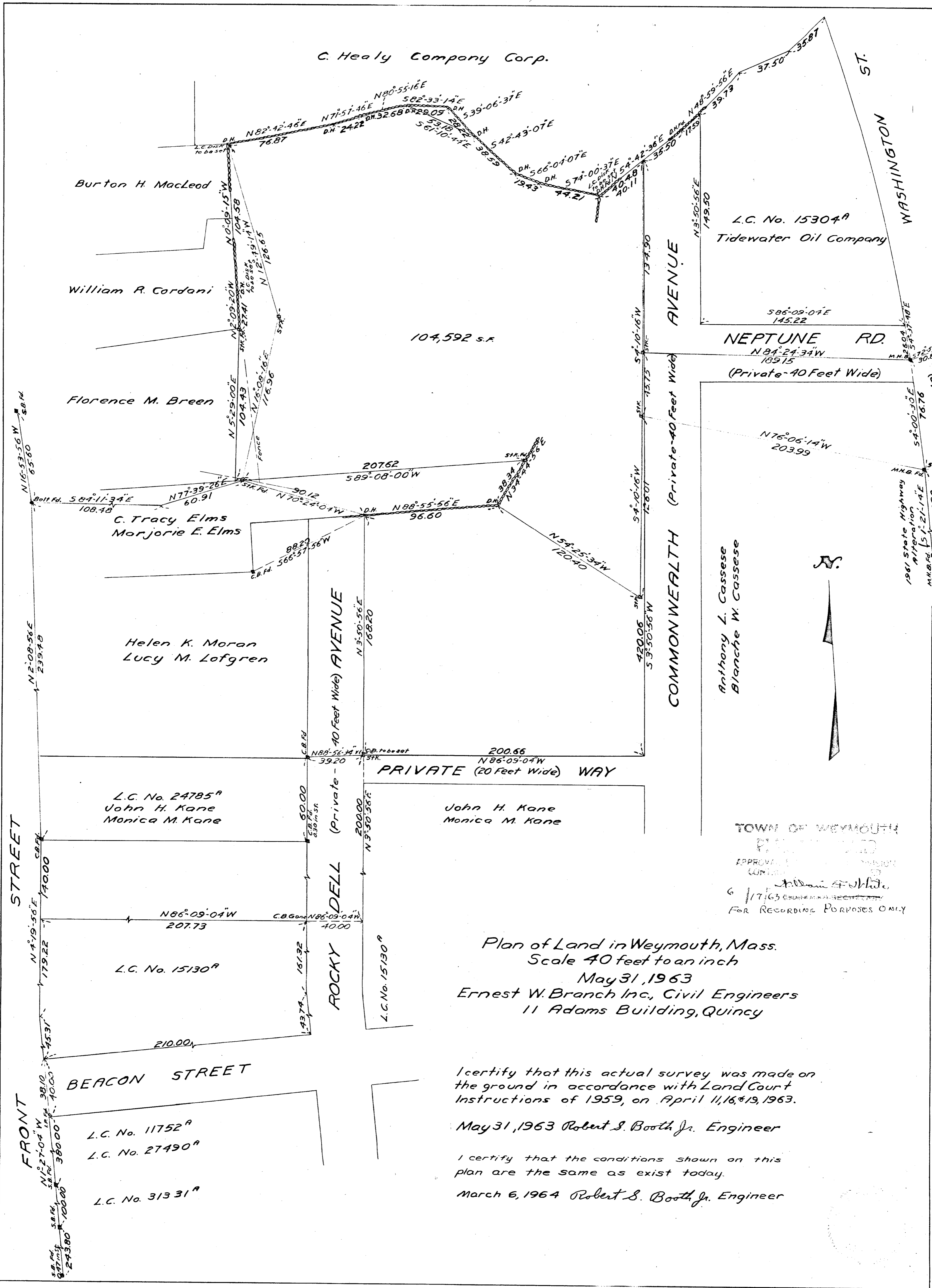


C. Healy Company Corp.



Burton H. MacLeod

William R. Cordani

Florence M. Breen

C. Tracy Elms  
Morjorie E. Elms

Helen K. Moran  
Lucy M. Lofgren

L.C. No. 24785<sup>A</sup>  
John H. Kane  
Monica M. Kane

L.C. No. 15130<sup>A</sup>

L.C. No. 11752<sup>A</sup>  
L.C. No. 27490<sup>A</sup>

L.C. No. 31331<sup>A</sup>

L.C. No. 15304<sup>A</sup>  
Tidewater Oil Company

Anthony L. Cassese  
Blanche W. Cassese

104,592 s.f.

PRIVATE (20 Feet Wide) WAY

AVENUE

COMMONWEALTH (Private-40 Feet Wide)

NEPTUNE RD.

(Private-40 Feet Wide)

WASHINGTON ST.

FRONT STREET

BEACON STREET

ROCKY DELL (Private-40 Feet Wide) AVENUE

TOWN OF WEYMOUTH  
PLANNING BOARD  
APPROVED  
6/17/63  
FOR RECORDING PURPOSES ONLY

Plan of Land in Weymouth, Mass.  
Scale 40 feet to an inch  
May 31, 1963  
Ernest W. Branch Inc., Civil Engineers  
11 Adams Building, Quincy

I certify that this actual survey was made on the ground in accordance with Land Court Instructions of 1959, on April 11, 16, & 19, 1963.

May 31, 1963 Robert S. Booth Jr. Engineer

I certify that the conditions shown on this plan are the same as exist today.

March 6, 1964 Robert S. Booth Jr. Engineer