

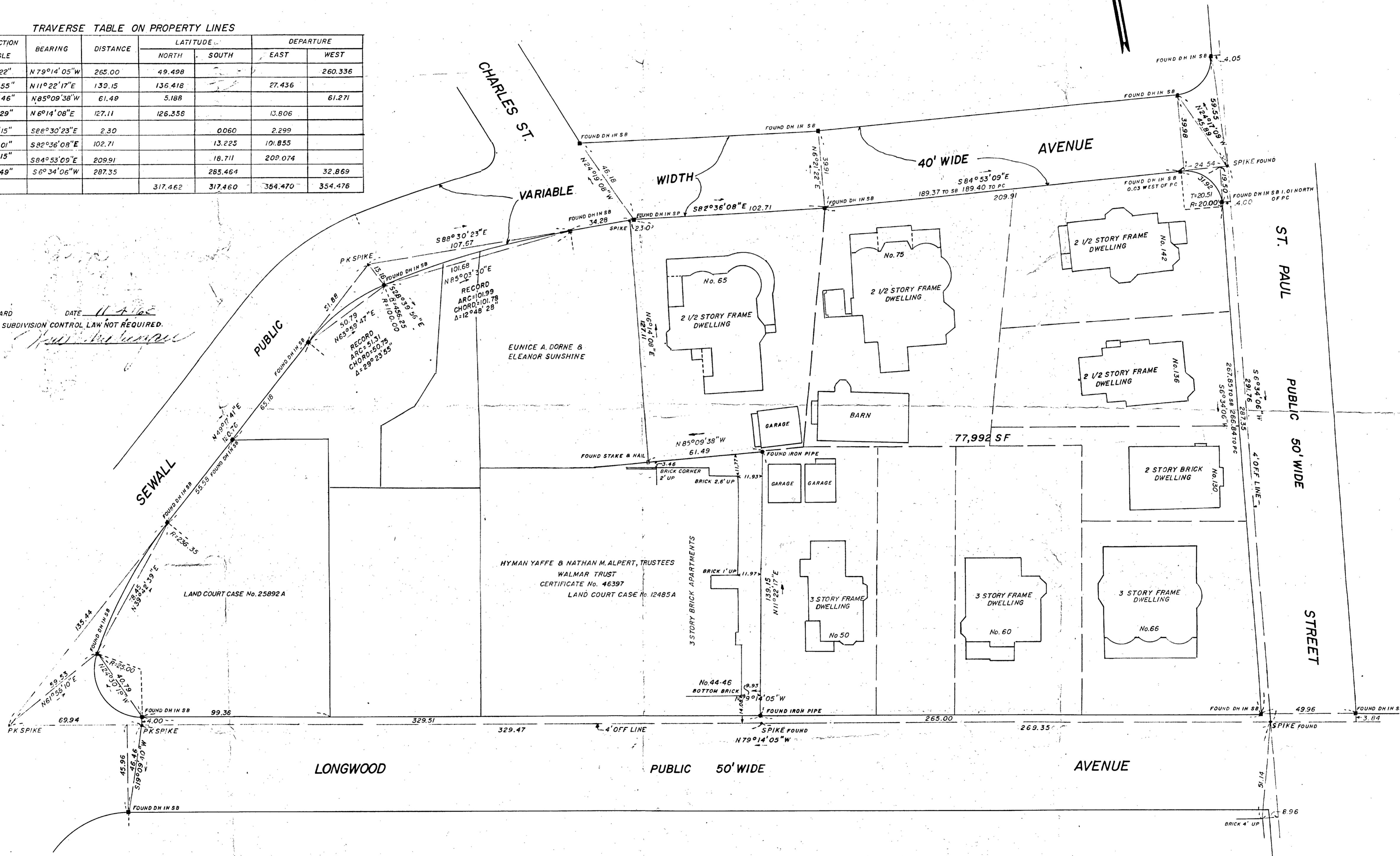
TRAVERSE TABLE ON TRANSIT LINES

INTERIOR ANGLE	DEFLECTION ANGLE	BEARING	DISTANCE	LATITUDE		DEPARTURE	
				NORTH	SOUTH	EAST	WEST
51°28'14"	128°31'46"	N79°14'05"W	668.76	124.915			656.990
137°48'04"	42°11'56"	N49°17'41"E	308.08	200.920		233.547	
174°05'45"	5°54'15"	S88°30'23"E	141.95		3.700	141.897	
182°17'01"	2°17'01"	S82°36'08"E	102.71		13.225	101.860	
88°32'45"	91°27'15"	S84°53'09"E	213.91		19.068	213.060	
85°48'11"	94°11'49"	S6°34'06"W	291.76		289.842	33.374	
720°00'00"				325.835	325.835	690.364	690.364

TRAVERSE TABLE ON PROPERTY LINES

INTERIOR ANGLE	DEFLECTION ANGLE	BEARING	DISTANCE	LATITUDE		DEPARTURE	
				NORTH	SOUTH	EAST	WEST
89°23'38"	90°36'22"	N79°14'05"W	265.00	49.498			260.336
276°31'55"	96°31'55"	N11°22'17"E	139.15	136.418		27.436	
88°36'14"	91°23'46"	N85°09'38"W	61.49		5.188	61.271	
94°44'31"	85°15'29"	N6°14'08"E	127.11		126.358	13.806	
174°05'45"	5°54'15"	S88°30'23"E	2.30		0.060	2.299	
182°17'01"	2°17'01"	S82°36'08"E	102.71		13.225	101.855	
88°32'45"	91°27'15"	S84°53'09"E	209.91		18.711	209.074	
85°48'11"	94°11'49"	S6°34'06"W	287.35		285.464	32.869	
1080°00'00"				317.462	317.460	364.470	354.476

BROOKLINE PLANNING BOARD
 APPROVAL UNDER THE SUBDIVISION CONTROL LAW NOT REQUIRED.



WE CERTIFY THAT THIS ACTUAL SURVEY WAS MADE ON THE GROUND IN ACCORDANCE WITH THE LAND COURT INSTRUCTIONS OF 1959 ON OR BETWEEN OCTOBER 9, 1963 AND OCTOBER 11, 1963 DATE: OCTOBER 23, 1963.

HENRY F. BRYANT & SON, INC.
 BY *Douglas Williams*



Not a County Map - 03

PLAN OF LAND
 IN
 BROOKLINE, MASS.

SCALE: 1 INCH = 30 FEET HENRY F. BRYANT & SON, INC.
 DATE: OCTOBER 23, 1963 ENGINEERS BROOKLINE, MASS.