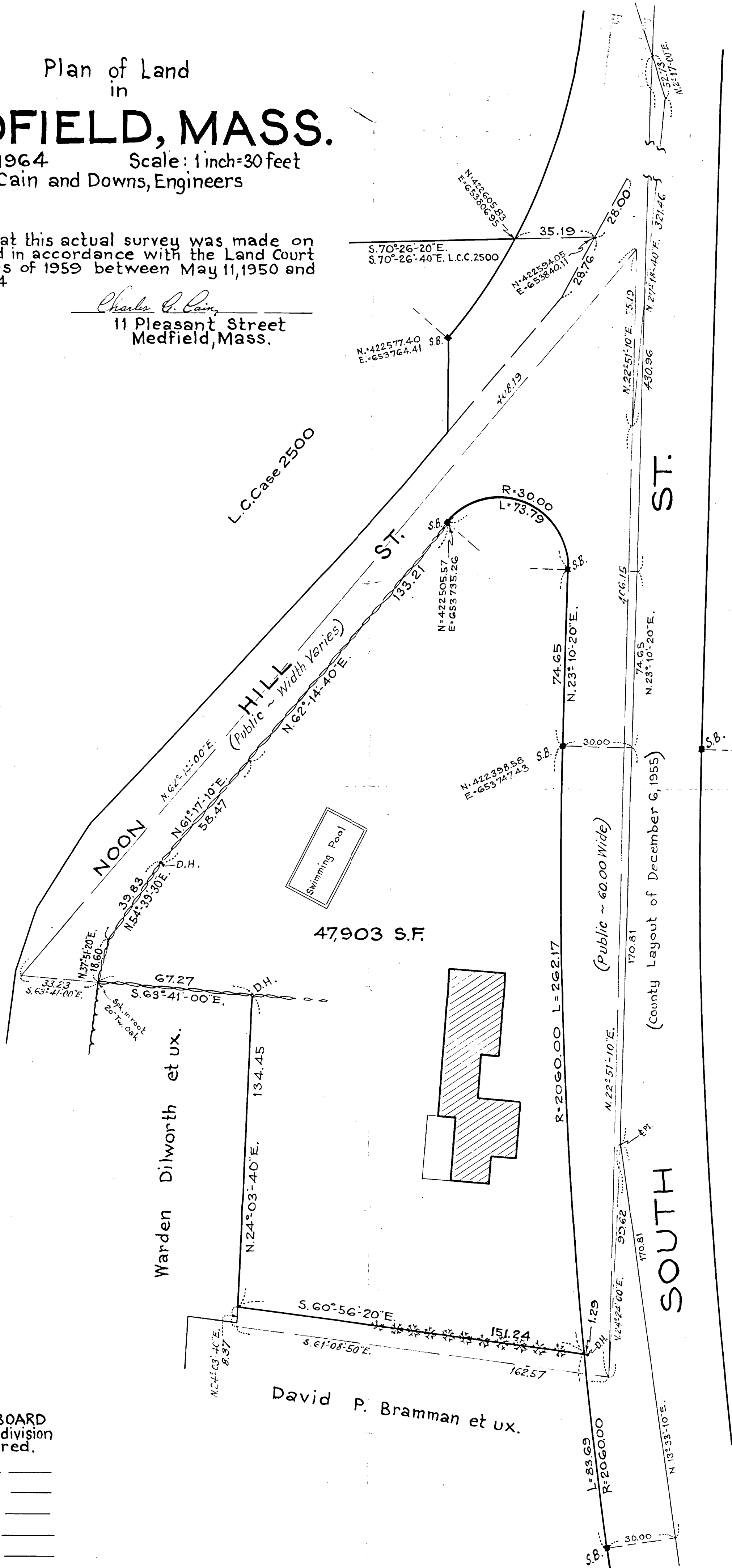
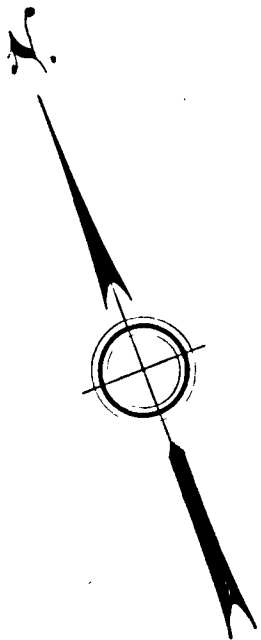


Plan of Land  
in  
**MEDFIELD, MASS.**

Jan. 16, 1964 Scale: 1 inch=30 feet  
Cain and Downs, Engineers

I certify that this actual survey was made on the ground in accordance with the Land Court Instructions of 1959 between May 11, 1950 and Jan. 4, 1964

*Charles C. Cain*  
11 Pleasant Street  
Medfield, Mass.



MEDFIELD PLANNING BOARD  
Approval under the subdivision  
control law not required.

\_\_\_\_\_

\_\_\_\_\_

\_\_\_\_\_

\_\_\_\_\_

\_\_\_\_\_

