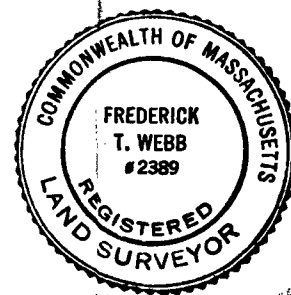


PLAN OF LAND IN
RANDOLPH NORFOLK COUNTY **MASS.**

SCALE: 1" = 40'

FEB. 27, 1962
 REV. MAR. 5, 1962
 REV. 2-17-64

THE SCHUYLER CLAPP CO.
 BRAintree, MASS.

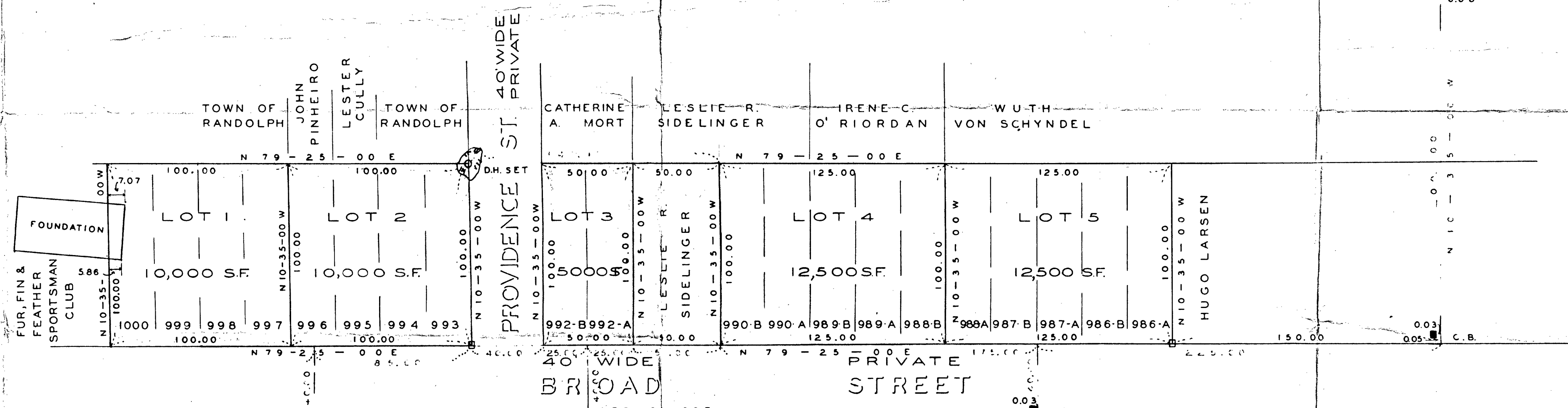


RE-EXAMINED IN THE FIELD SEPT. 30, 1963

Charles E. Gale
 REGISTERED LAND SURVEYOR

C.B.
 118.00
 2 10 13 5 100.00 W
 L.C. NO.
 26539-A
 76.40 TO P.C.
 C.B.
 42.05
 0.10 C.B.
 100.00
 0.08 C.B.
 0.07
 L.C. NO.
 29339-A

N 79-25-00 E
STATE 40 WIDE STREET



NOTE:
 THIS IS A DUPLICATE TRACING OF A PLAN ALREADY
 ON FILE IN THE LAND COURT AS 32622-A

NOTE:
 THIS IS TO CERTIFY THAT THE CONDITIONS AS SHOWN
 ON OUR PETITIONER'S PLAN DATED FEB. 27, 1962 REV.
 MAR. 5, 1962, ARE THE SAME TODAY AS THEY WERE THEN,
 WITH THE EXCEPTION THAT THE CONCRETE BOUND AT
 THE NORTHWEST CORNER OF LAND COURT CASE NO 26539
 IS MISSING.

Charles E. Gale

□ DENOTES CONC. BOUND SET.
 HIGH LOT NUMBERS SHOWN ON PLAN OF
 "BRAINTREEVILLE MANOR" DATED DEC.
 18 1926, FILED IN NORFOLK REGISTRY AS
 1735-END.

STAKES SET AT ALL OUTSIDE LOT CORNERS.

I CERTIFY THAT THIS ACTUAL SURVEY WAS
 MADE ON THE GROUND IN ACCORDANCE WITH
 THE LAND COURT INSTRUCTIONS OF 1959.
 ON FEB. 8 1962.

Charles E. Gale