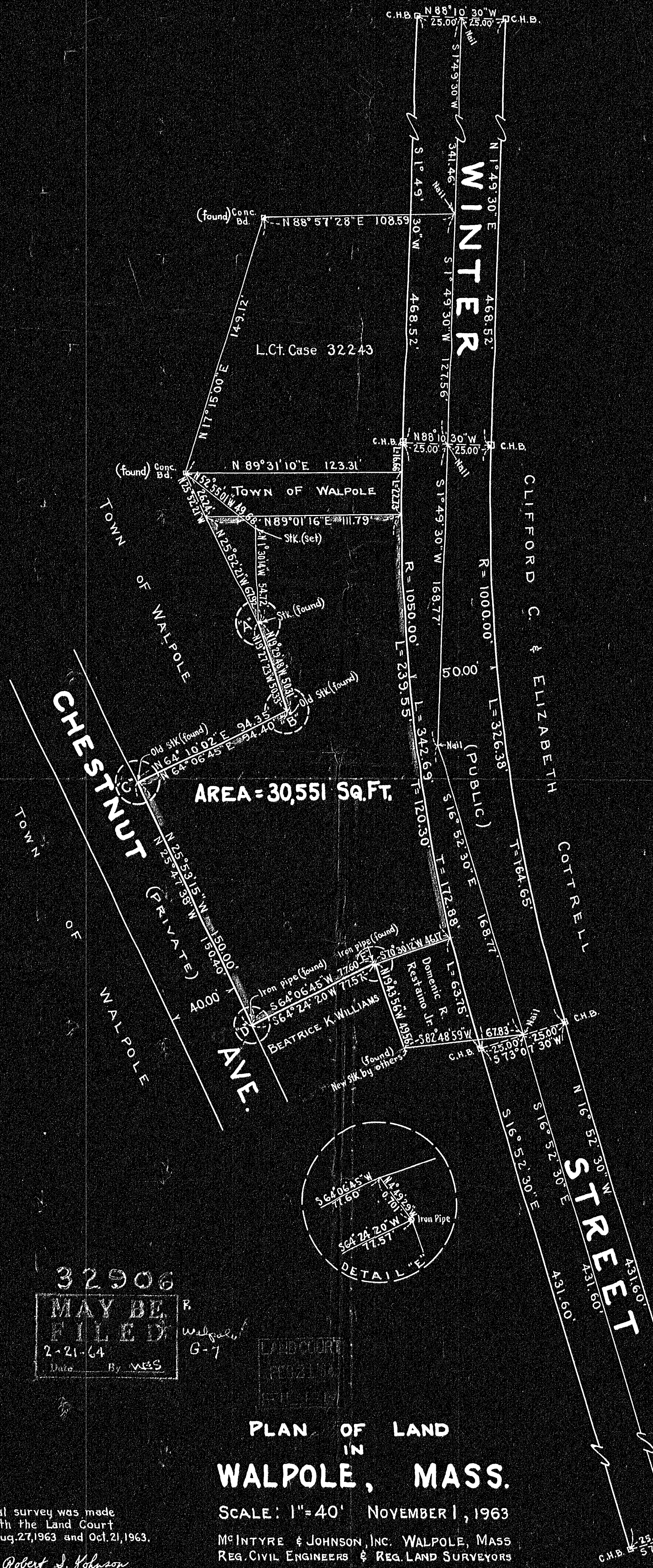
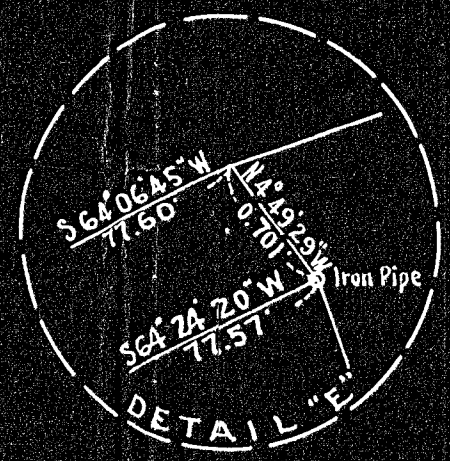
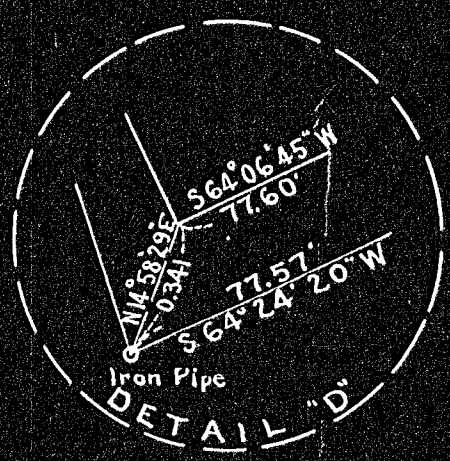
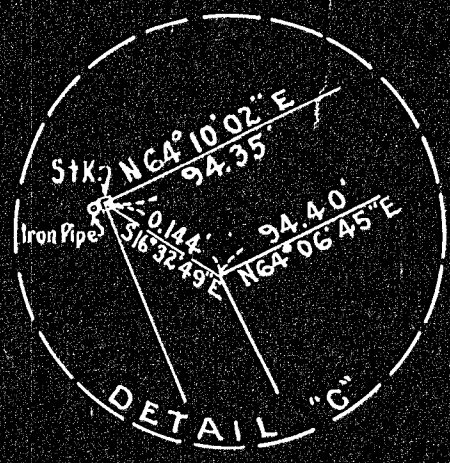
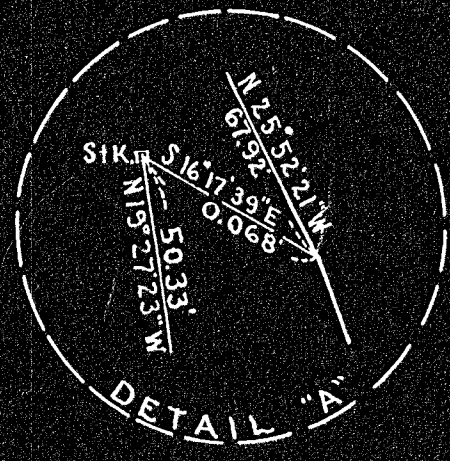


L.C. No. 12438A



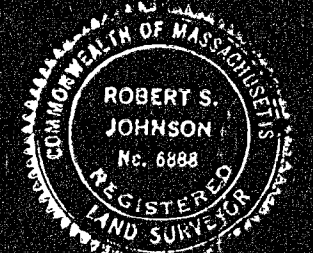
TOWN OF WALPOLE  
PLANNING BOARD  
APPROVAL UNDER THE SUBDIVISION  
CONTROL LAW, NOT REQUIRED.  
DATE: Jan. 14, 1964  
*James J. Maguire*  
*John J. Duffly*  
*John A. Cosman*

32906  
MAY BE FILED  
2-21-64  
Date By WES

LAND COURT  
RECEIVED  
FEBRUARY 21 1964

PLAN OF LAND  
IN  
WALPOLE, MASS.

SCALE: 1"=40' NOVEMBER 1, 1963  
McINTYRE & JOHNSON, INC. WALPOLE, MASS  
REG. CIVIL ENGINEERS & REG. LAND SURVEYORS



I hereby certify that this actual survey was made on the ground in accordance with the Land Court Instructions of 1959 between Aug. 27, 1963 and Oct. 21, 1963.

Robert S. Johnson  
Date: 11/1/63