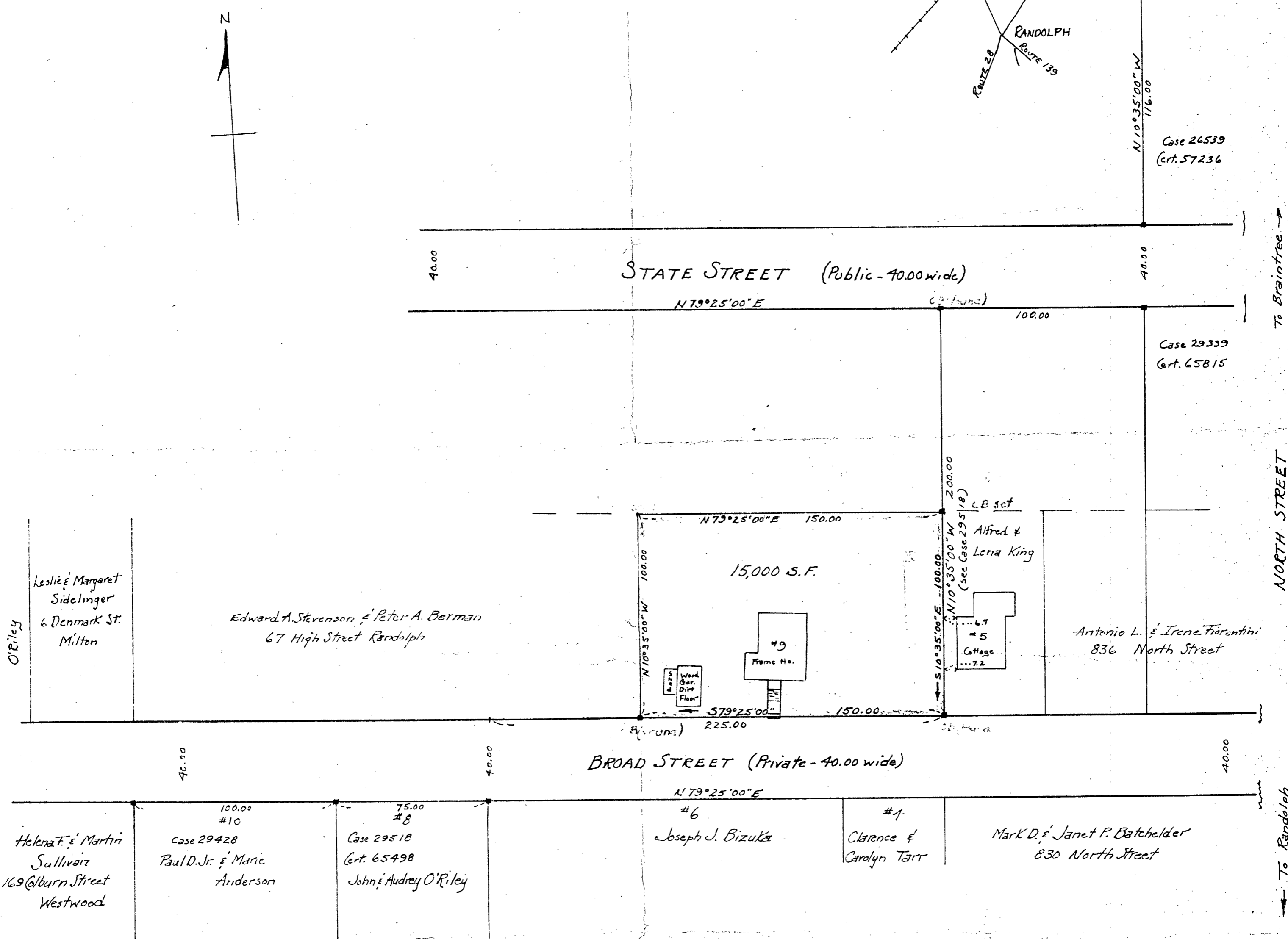
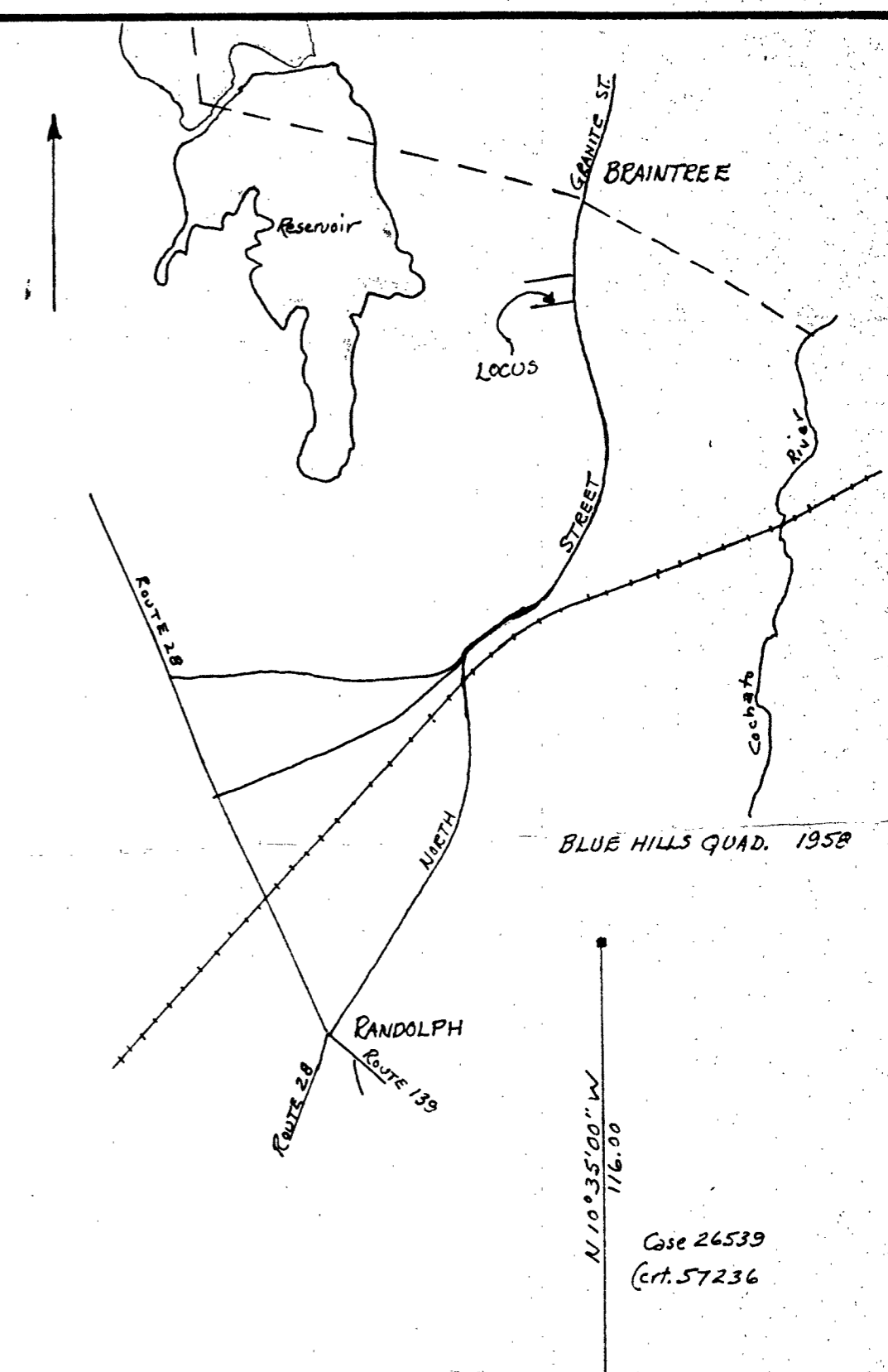


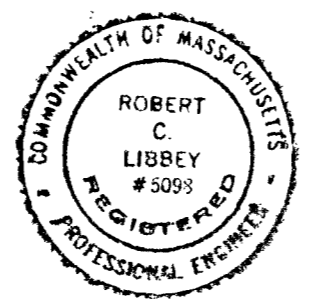
JULY 15, 1963 R.C.L. VCWL. AUGUST 3, 1963

STA.	BEARING	DIST.	LAT.		DEPT.	
			N.	S.	E.	W.
C.B.	N 10° 35' W	100.00	98.299			18.367
Stk	N 79° 25' E	150.00	27.550		147.448	
C.B.	S 10° 35' E	100.00		98.299	18.367	
C.B.	S 79° 25' W	150.00		27.550		147.448
			125.849	125.849	165.815	165.815



**PLAN OF LAND IN RANDOLPH**  
Scale: 1" = 40' July 29, 1963

**ROBERT C. LIBBEY ASSOCIATES**  
ENGINEERS - NORTON



Approval under the Subdivision  
Control Law not required.  
RANDOLPH PLANNING BOARD  
Date: . . . . .

I certify that this actual survey was made  
on the ground in accordance with the  
Land Court Instructions of 1959  
between July 6 and July 13, 1963

256 North Main Street  
Randolph, Mass.