

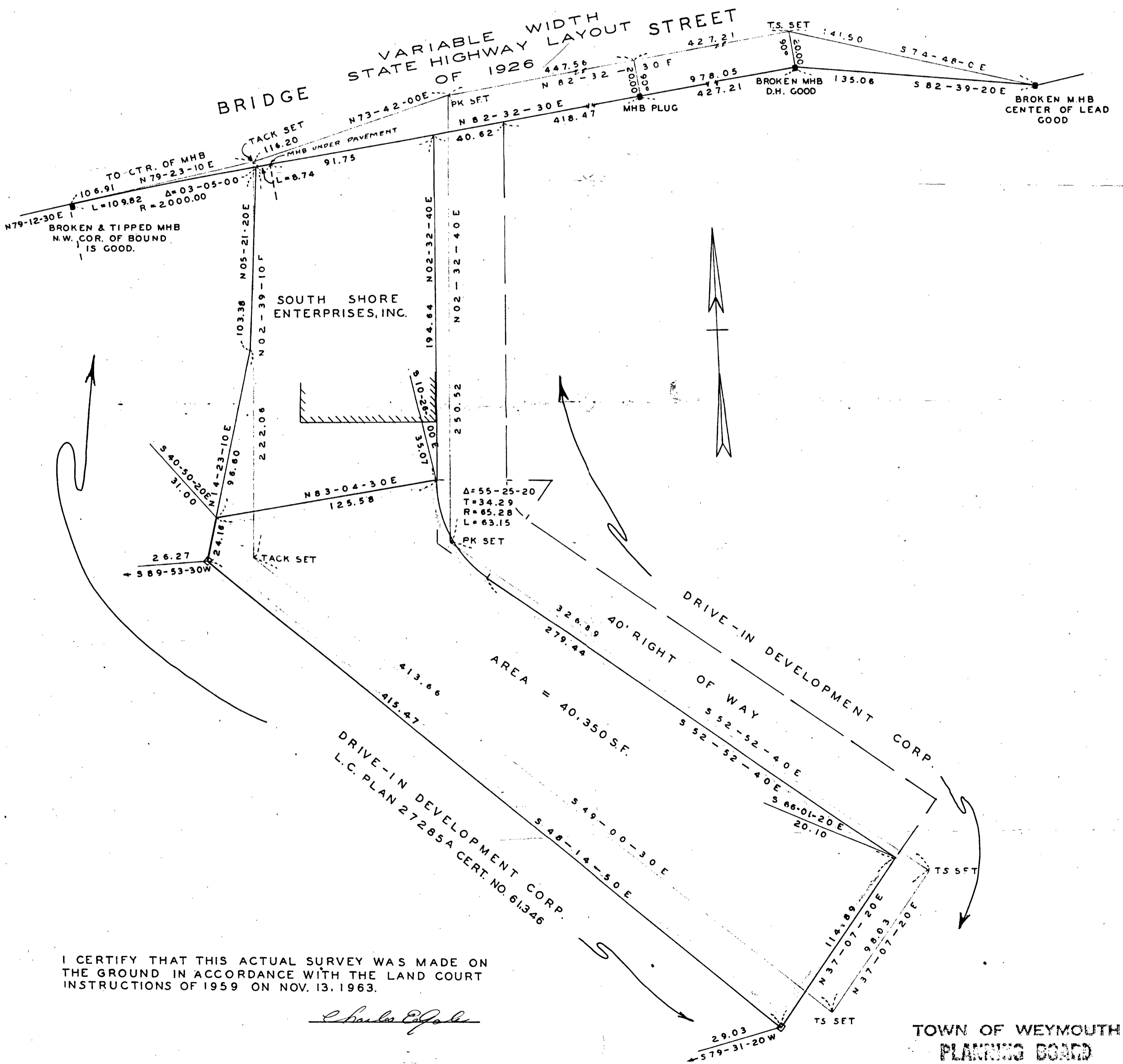
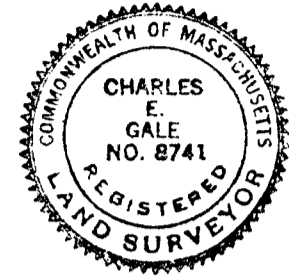
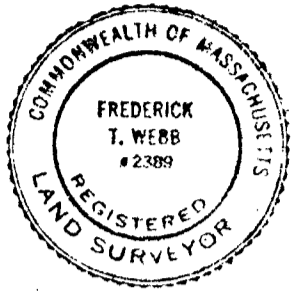
PLAN OF LAND IN WEYMOUTH, NORFOLK CO., MASS.

SCALE: 1" = 40'

NOV. 15, 1963

REV. NOV. 21, 1963

THE SCHUYLER CLAPP CO.
BRAintree, MASS.



I CERTIFY THAT THIS ACTUAL SURVEY WAS MADE ON THE GROUND IN ACCORDANCE WITH THE LAND COURT INSTRUCTIONS OF 1959 ON NOV. 13, 1963.

Charles E. Gale

DENOTES CONCRETE BOUND TO BE SET. - □

TOWN OF WEYMOUTH PLANNING BOARD

APPROVAL UNDER THE SUBDIVISION CONTROL LAW NOT REQUIRED.

Chairman
Secretary